

# Rockland County Comprehensive Plan Public Workshop

September 15, 2010



County of Rockland

New York



BFJ Planning

# PROJECT TEAM

Rockland County Executive

*C. Scott Vanderhoef*

Rockland County Legislature

*Hon. Harriet D. Cornell, Chairwoman*

Commissioner of Planning and Public Transportation

*Salvatore Corallo*

Technical Advisory Committee

Project Consultants

*BFJ Planning*

*Urbanomics*

*McLaren Engineering*



# COMPREHENSIVE PLAN OVERVIEW

## THE COUNTY WANTS TO KNOW:

- What issues are most important to you
- How you envision the County in the future and your ideas for getting there

## HOW DOES THE PLAN AFFECT THE COUNTY?

- Provides guidance for future planning & municipal zoning actions
- Basis for County government planning/development issues for next 10-20 years
- Creates framework for future County government capital expenditure decisions
- Can identify local land use conflicts via “big picture” approach to regional issues

## WHO IS PARTICIPATING IN THE PLAN PROCESS?

- General public
- County Executive’s Office
- County Legislature
- Rockland County Planning Department
- Municipal Officials

# COMPREHENSIVE PLAN

## Process and Table of Contents

### Process

- Bi-weekly meetings with Technical Advisory Committee
- Four public workshops
- One public hearing
- Plan website:  
[www.rccompplan.com](http://www.rccompplan.com)

### Table of Contents

- 1.0 Introduction and Goals
- 2.0 History and Regional Setting
- 3.0 Demographics
- 4.0 Aging Population
- 5.0 Land Use and Zoning
- 6.0 Transportation
- 7.0 Natural and Environmental Resources
- 8.0 Parks and Open Space
- 9.0 Historic and Cultural Resources
- 10.0 Housing
- 11.0 Economic Development
- 12.0 Infrastructure
- 13.0 Services and Information Resources
- 14.0 Recommendations and Implementation

# PUBLIC HEARINGS AND WORKSHOPS

## December 2, 2009 Workshop

“Rockland Today”:

- Goals & Objectives
- Demographics/Aging Population
- Regional Setting
- Land Use & Zoning

## April 15, 2010 Workshop

- Parks & Open Space
- Natural & Environmental Resources
- Transportation

## June 9, 2010 Workshop

- Demographics/Aging Population
- Historic & Cultural Resources
- Housing
- Economic Development

## Tonight’s Workshop

- **Infrastructure**
- **Services & Information Resources**
- **Draft Summary of Recommendations**

## October 2010 Public Hearing

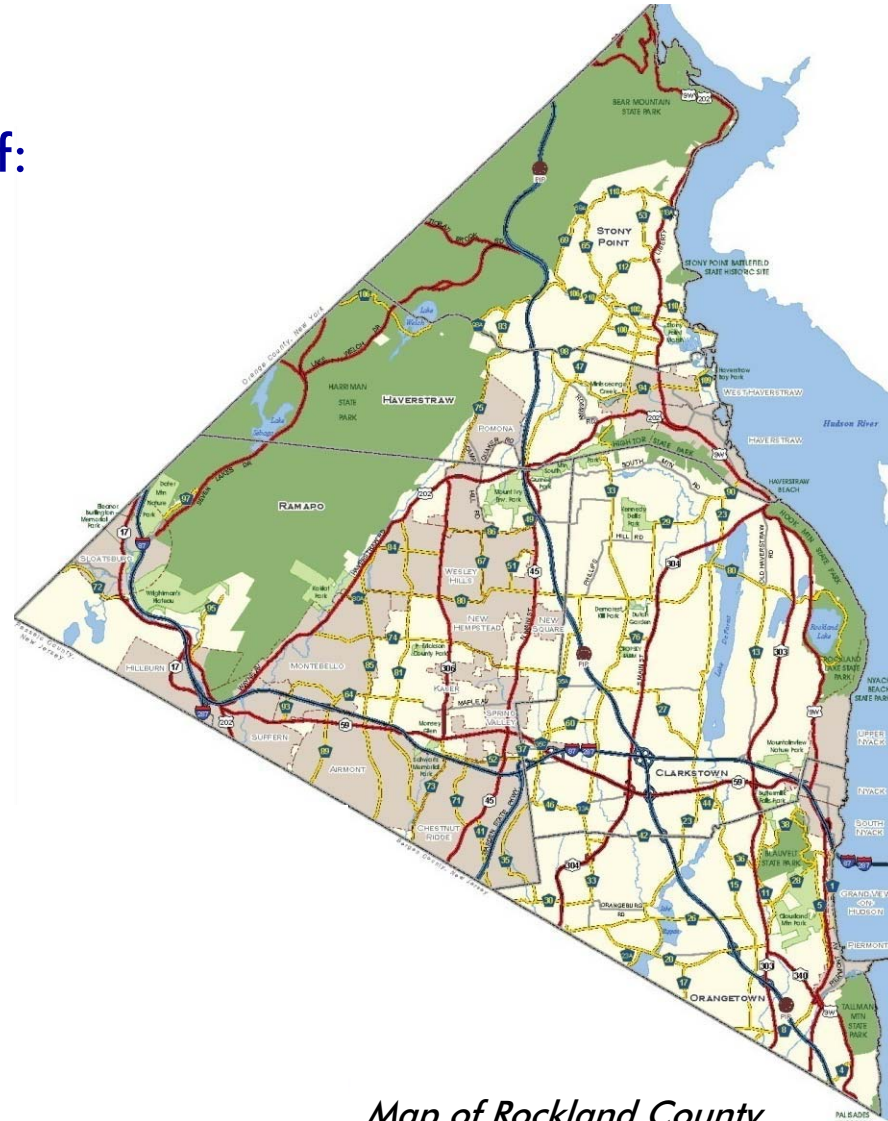
- Draft Comprehensive Plan & DGEIS

# INFRASTRUCTURE

## Existing Conditions

Resources, supply/demand, capacity, planned expansion and constraints of:

- Water
- Sanitary sewers
- Solid waste
- Electricity/energy
- Natural gas
- Telecommunications
- Drainage Infrastructure



*Map of Rockland County*



# INFRASTRUCTURE

## Water Supply

### Provided By:

- 90%: United Water New York
- 6% to 7%: Small water companies
- 4%: Private wells

### Sources of Water:

- Ramapo Aquifer: 3.7 billion gallons per year
- Newark Basin Aquifer: 3.9 billion gallons per year
- Surface Water Sources: Includes Lake DeForest and three Letchworth Reservoirs
- Private Wells: 6,000 to 8,000 private wells



*Lake DeForest Dam*





## Findings:

- Options for new production wells are limited
- Water-level data suggests that there is not a year-to-year, aquifer-wide downward trend in water levels
- Seasonal declines are the greatest limitation
- Contamination by human activities
- Increased impervious surfaces reduces groundwater recharge, which decreases groundwater levels

# INFRASTRUCTURE

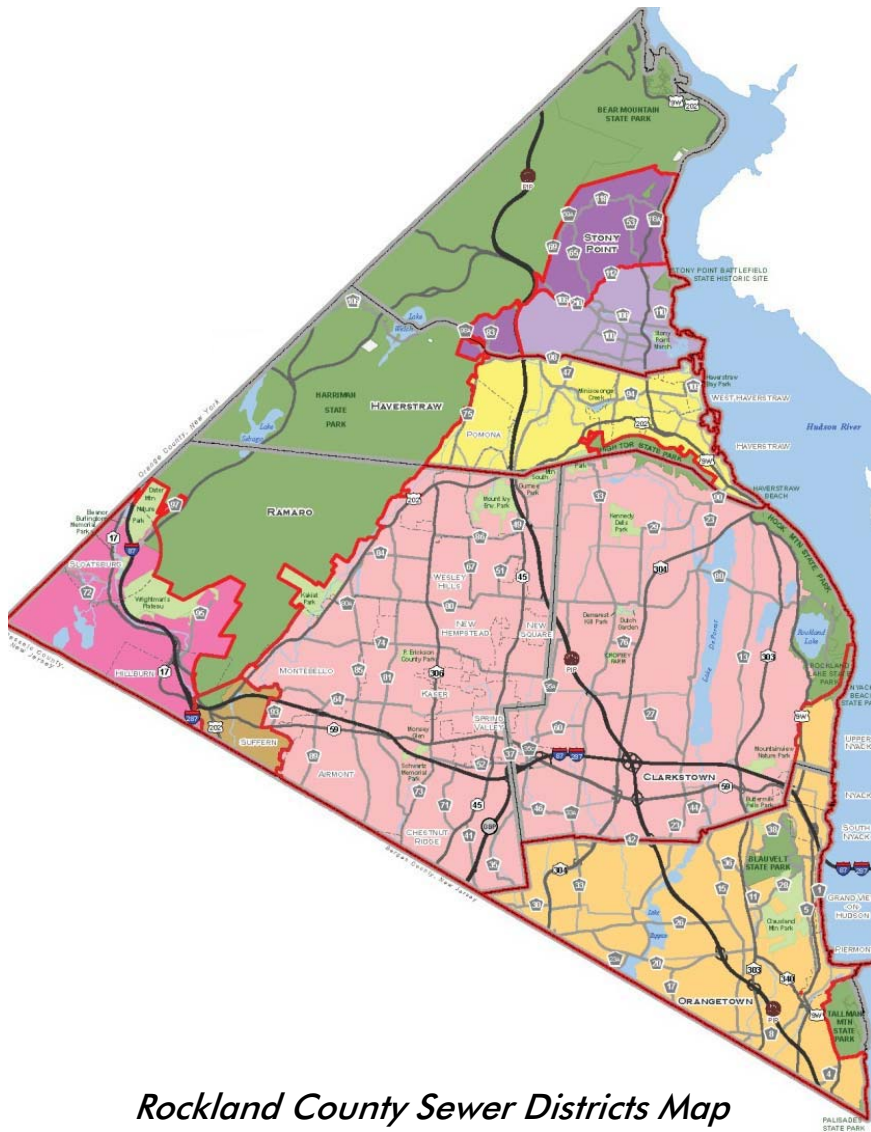
## USGS Study

### USGS Indicated the Following Potential Additional Water Sources:

- Additional development of the groundwater resource in the Newark Basin Aquifer
- Surface Water from the Highlands reservoirs
- Capture of storm flows in retention basins or reservoirs
- Desalinization of Hudson River water
- Recycled wastewater

# INFRASTRUCTURE

## Sanitary Sewers



*Rockland County Sewer Districts Map*

### Existing Facilities

- 7 Municipal Wastewater Treatment Plants
- 18 SPDES permits issued to private sewer facilities

### Challenges for the Future

- Identify system or capacity constraints that could affect development
- Reduce inflow and infiltration into sanitary sewer collection systems
- Reduce and monitor untreated sanitary sewer discharges to rivers and streams

# INFRASTRUCTURE

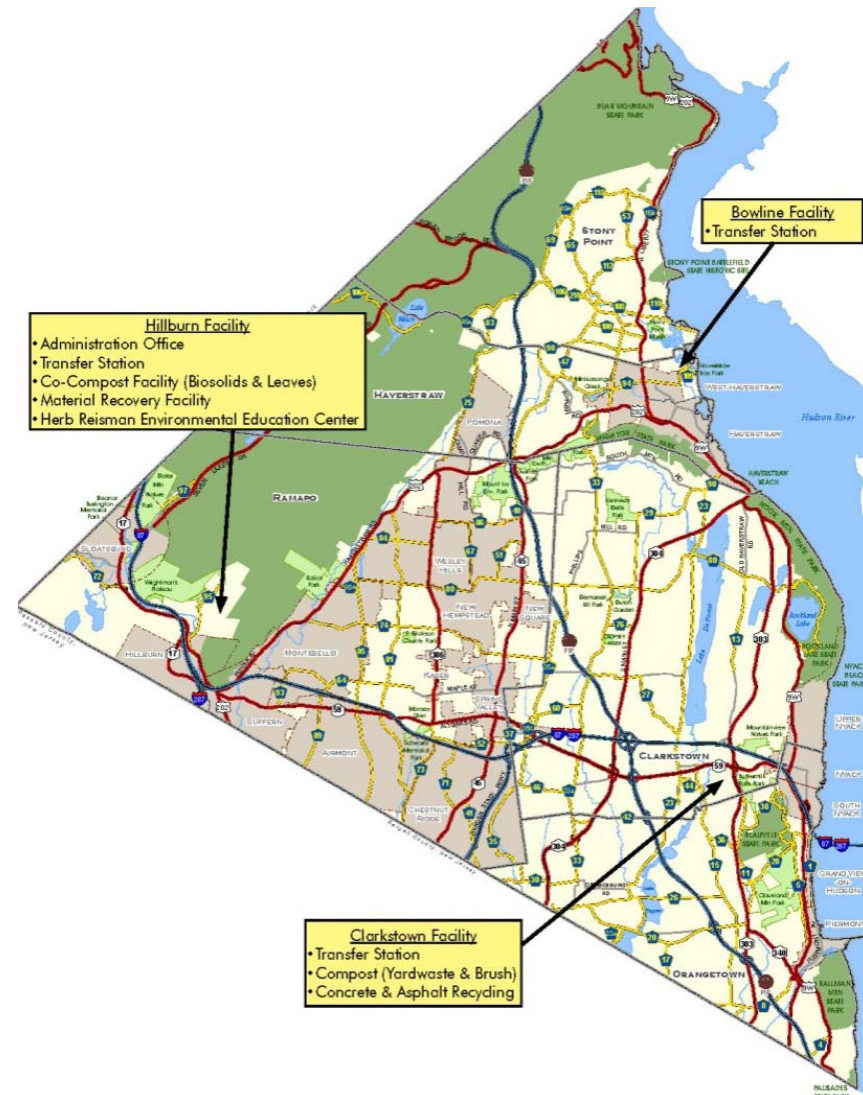
## Solid Waste Management

### Rockland County Solid Waste Management Authority

- Governed by a 17-member board
- County Flow Control Law requires that waste must be delivered to publicly owned solid waste facilities

### Authority's services include:

- Materials recovery facility
- Biosolids co-composting facility
- Yard waste composting facilities
- Household hazardous waste facility
- Transfer stations



*Rockland County Solid Waste Management Authority  
Facilities*

# INFRASTRUCTURE

## Electric and Gas Facilities

### O&R's Electric System:

- 170,000 overhead services
- 15,000 miles of overhead conductor with 180,000 poles
- Underground system with 734 miles of conductor and 44,000 services
- 2009 peak system demand: 519 megawatts with 805 megawatt capacity

### O&R's Gas System:

- 81,062 residential customers, 7,588 commercial customers
- 20 industrial customers
- 2009 system demand: 18,620,418 dekatherm

### Future Demand and Facilities:

O&R develops 20-year plans to determine future system demands

# INFRASTRUCTURE

## Preliminary Recommendations

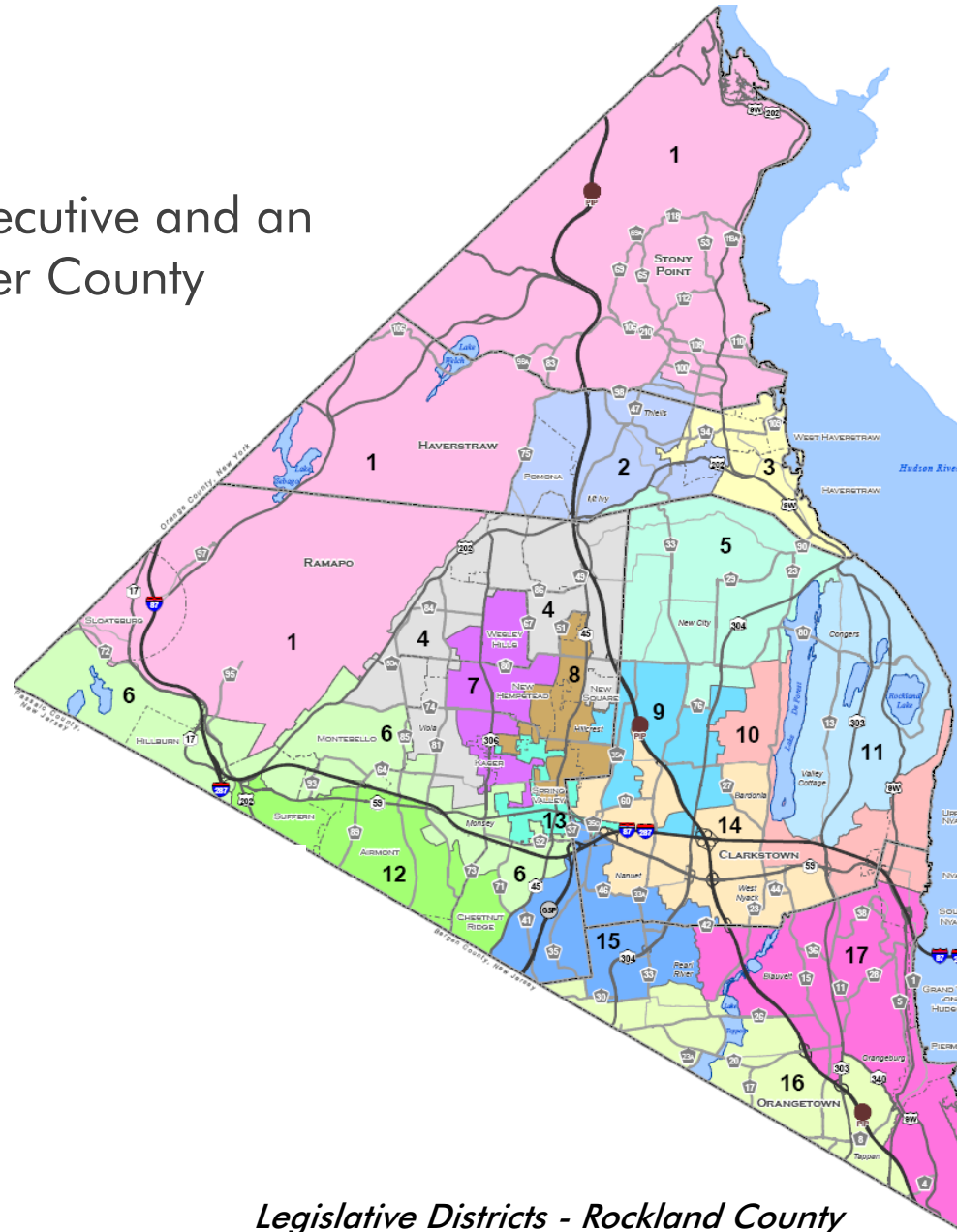
- Promote water conservation, reduction in impervious surfaces, and stormwater infiltration
- Investigate potential additional water sources
- Address potential water supply shortfall
- Adopt regulations for watershed protection
- Use green development and infrastructure practices
- Identify sanitary sewer system capacity constraints and reduce inflow into sewers
- Reduce and monitor untreated sanitary sewer discharges
- Coordinate infrastructure, paving and new utility projects
- Encourage use of renewable resources and waste reduction policies
- Upgrade infrastructure to support new business



# SERVICES AND INFORMATION RESOURCES

## General County Government

- Elected County Executive and an elected 17-member County Legislature



*Legislative Districts - Rockland County*



# SERVICES AND INFORMATION RESOURCES

## Services and Facilities

### Law Enforcement and Fire & Emergency Services

- Elected Sheriff
- Local Law Enforcement: Municipal police forces in towns and villages
- 26 all-volunteer fire departments
- Emergency Response Operations

### Educational Facilities, Libraries and Religious Institutions

- 8 school districts containing a total 63 primary and secondary schools
- 14 institutions of higher learning
- 19 public library branches
- Wide range of religious institutions and houses of worship



*Empire Hook & Ladder  
Co. No. 1, Upper Nyack*



*Lamont-Doherty Earth  
Observatory, Palisades*

# SERVICES AND INFORMATION RESOURCES

## Health Care and County Agencies

### Health Care and Hospitals

- Five hospitals
- Six federally-funded Community Health Centers
- County clinics



*Good Samaritan Hospital, Suffern*

### Rockland County Agencies

- Department of Social Services
- Office for the Aging
- Department of Health
- Department of Mental Health
- Office for People with Disabilities
- Department of Probation
- Rockland County Veterans Service Agency
- Youth Bureau

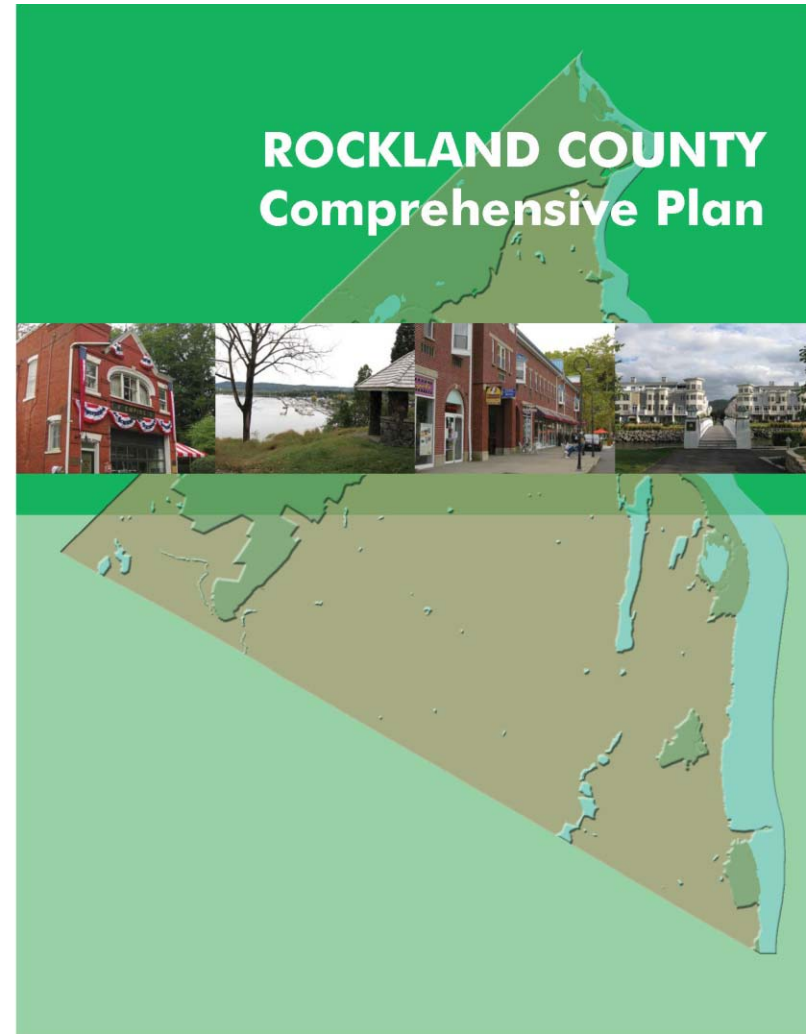
## SERVICES AND INFORMATION RESOURCES

### Preliminary Recommendations

- Expand housing opportunities
- Integrate housing and social services for groups with special needs
- Support housing for mentally disabled and intellectually challenged
- Seek institutional and corporate partners to reinforce centers
- Ensure that education and community facilities are adequate
- Continue to support and expand e-governance

# PLAN IMPLEMENTATION

- Adoption of the Comprehensive Plan
- Capital programming
- County official maps:
  - Roads
  - Streams
  - Parks
- Model local laws and guidelines
- Officially update every 10 years
- Continuing planning  
(e.g. Community Viz)



# UPCOMING PUBLIC MEETINGS

## November:

Public Hearing on Draft Comprehensive Plan and Draft  
Generic Environmental Impact Statement (DGEIS)

**Stay Informed!**

**<http://www.rccompplan.com>**

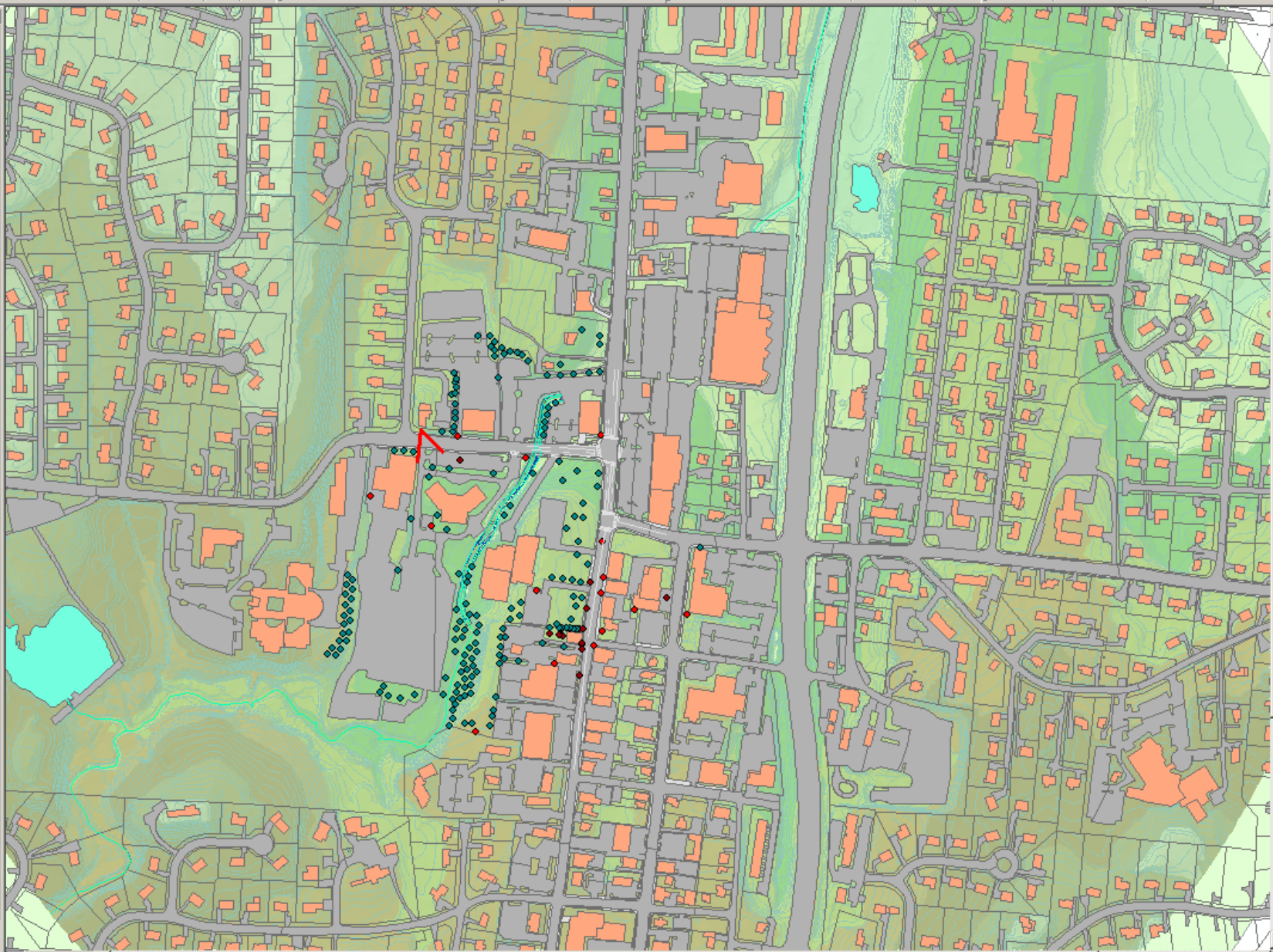
## An implementation tool for the Comprehensive Plan

## COMMUNITY VIZ

- Visualization of new proposals
- Builds off existing GIS technology
- Compares alternatives
- Measures impacts



- Existing Conditions
  - Street markings
  - Trees
  - Dutch Dr
  - Dutch Gdn future
  - Dutch Gdn
  - cars
  - SketchUp
  - Buildings\_NC\_Study\_Area1
  - Buildings\_NC\_Study\_Area2
  - Streams
  - lakes
  - roads\_Clip1
  - driveways
  - parking
  - sidewalks
  - clt\_0802official\_parcel...\_Cli
  - radius
  - Data
  - Rockland\_Streets\_Clip



Display Source Selection  
360 Analysis 360 Setup

Drawing Arial 10 B I U

Editor Task: Create New Feature Target:

632824.898 841753.451 Feet

# COMMUNITY VIZ





- Existing Conditions
  - Street markings
  - Dutch Gdn future
  - Trees
  - Dutch Dr
  - Dutch Gdn
  - cars
  - SketchUp
  - Buildings\_NC\_Study\_Area1
  - Buildings\_NC\_Study\_Area2
  - Streams
  - lakes
  - roads\_Clip1
  - driveways
  - parking
  - sidewalks
  - clt\_0802official\_parcel\_Cli
  - radius
  - Data
  - Rockland\_Streets\_Clip



Display Source Selection  
360 Analysis 360 Setup

Drawing Arial 10 B I U

Editor Task: Modify Feature Target:

632314.048 842271.68 Feet



- Existing Conditions**
- Street markings
  - Dutch Gdn
  - Dutch Gdn future
  - Dutch Dr
  - cars
  - Streams
  - Buildings\_NC\_Study\_Area
  - driveways
  - lakes
  - parking
  - roads\_Clip1
  - SketchUp
  - Trees
  - Rockland\_Streets\_Clip
  - Buildings\_NC\_Study\_Area
  - sidewalks
  - radius

Height: 7 feet  
Speed: 20





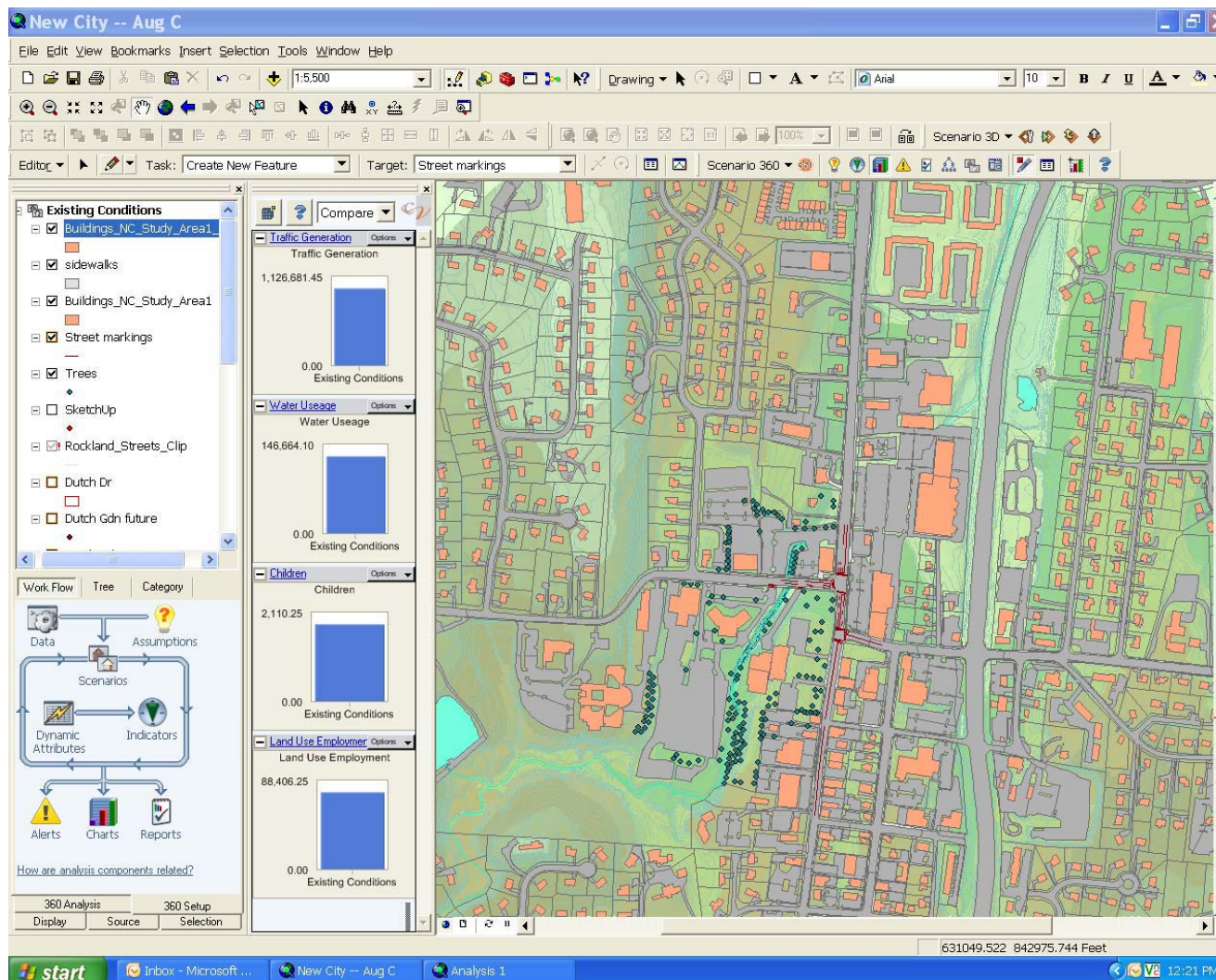
# COMMUNITY VIZ



# COMMUNITY VIZ

## Measuring Impacts

Standards and Dynamic Assumptions can be applied to site characteristics (floorspace, dwelling units, etc.), creating summary impacts of different land use and development scenarios





## AFTER THE PRESENTATION

- Coffee
- Roundtable Discussions and Open House (concurrent sessions)

### Roundtable Discussions

- ❖ *Infrastructure*
- ❖ *Services & Information Resources*

### Open House

- ❖ *Open house stations for all draft chapters*

- Roundtable Groups Report Back
- Plenary Session on Draft Summary of Recommendations

