



Photo: Ken Karlewicz.

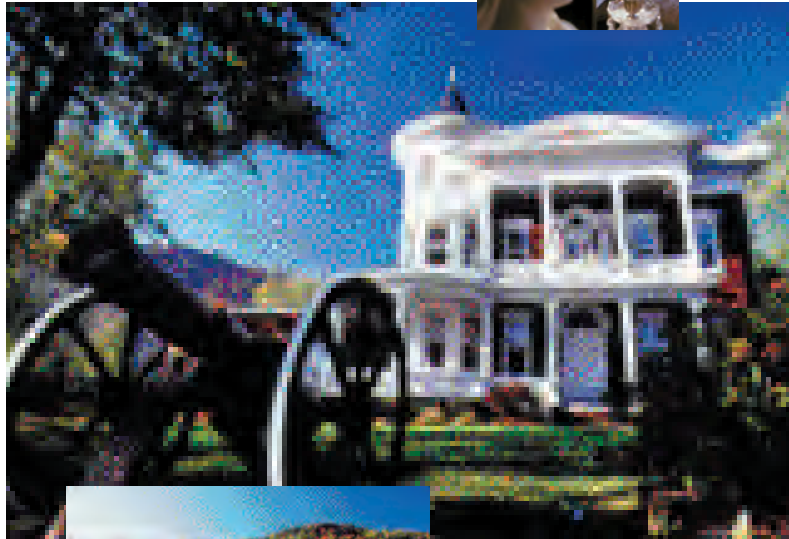


Photo: Jeff Fleisig.



Photo: Jeff Fleisig.



Photo: Ken Karlewicz.

Just 16 miles north of Manhattan's glittering attractions, Rockland County offers a pastoral countryside spiced by quaint villages, historic sites, churches and farms, galleries and antique shops, five-star restaurants, theatres and diverse ethnic festivals.

W e l c o m e !



Photo: Ken Karlewicz

On the edge of the majestic, historic Hudson River are four of Rockland's five towns. Leisurely travel this magnificent river valley which once inspired the Hudson River School of American Painters.

Rockland's unusual and varied historic architecture is evident in several of its villages. River towns of Clarkstown, Haverstraw, Orangetown and Stony Point are comprised of a variety of communities, each with its own special history and appeal that awaits you now, and again when you wish to return. Residents of the area love their communities,

scenic surroundings, rural traditions and, most especially, a "Main Street" way of life. Diverse premier shopping attractions abound.

Our river villages are renowned for street fairs (antiques, collectibles and crafts), parades (Nyack's Halloween Parade is viewed by 40,000 and Pearl River's St. Patrick's Day Parade is the 2nd largest in NYS), and ethnic festivals. These



emerge from the homelands of our diverse population including Asia, the Dominican Republic, Egypt, Germany, Greece, Haiti, India, Ireland, Jamaica and Puerto Rico. Rockland has numerous summer and year-round weekly concerts. We celebrate the river with arguably the best crab, oyster & shad fests in the Hudson Valley and open-to-the-public trade shows feature auto, fishing, golf, home, kennel and recreational vehicle shows.

Our American Indian Pow Wow is unique to the Hudson Valley. For events information,

call 1-800-295-5723 or visit [www.rockland.org](http://www.rockland.org).

33,000 acres of parklands, fabulous eateries and coffee houses beckon hiking and biking enthusiasts during most of the year. Weekends or weekdays, you'll often find a Village Farmer's Market bringing seasonal bounty, baked goods and fun for the children.

Lighten the heart, relax the mind...Discover Heritage on Hudson...We'll send you home smiling and renewed.



All photos: Ken Karlewicz.

# Unique to the Hudson Valley and Metro Area, Visit Any One or More of Our Attractions...Always Brimming with Interest.

Exhibits, Performances & Events—  
Ever Changing, Always Alive with Interest.  
1-800-295-5723, (845) 708-7300.

Call the following attractions for hours, admission fees and special needs.

## **Edward Hopper House and Art Center**

This home of the realist painter Edward Hopper was built in 1858. One room is devoted to materials about Hopper's work and life in Nyack. Three other rooms provide space for monthly exhibits by local artists. The restored garden is the setting for jazz concerts on summer evenings. Handicapped accessible. Open Sat/Sun 1-5 p.m. 82 North Broadway, Nyack, NY 10960, (845) 358-0774. [www.edwardhopperhouseartcenter.org](http://www.edwardhopperhouseartcenter.org) for schedule of exhibits, programs and classes.



## **Rockland Center for the Arts**

Founded by Lotte Lenya and Kurt Weil, Helen Hayes, Maxwell

Anderson and others, many of whom lived quietly on South Mountain Road in New City. The site of the center, now undergoing expansion and renovation, features a sculpture garden, four major exhibits each year. A 200-seat performing arena is planned. 27 South Greenbush Rd., W. Nyack, NY 10994, (845) 358-0877.

## **Arts Alliance of Haverstraw**

A hub of creativity comprised of a core group of community members and artists committed to celebrate and share the art of rich and diverse cultural heritages. Exhibits, performances and events. 91 Broadway, Haverstraw, NY 10927, (845) 786-0253.

## **Garnerville Arts and Industrial Center**

Visit artists and artisans at work. 55 Railroad Avenue, Garnerville, NY 10923, (845) 947-1155.

Children's, Family and Grown-up Performance  
at a Variety of Theaters:

## **Elmwood Playhouse**

A community theatre offering renditions of tried and true favorites. 10 Park St., Nyack, NY 10960, (845) 353-1313.



## **Helen Hayes Theatre Company**

An Equity theatre offering original productions of shows you know and love. You can always count on an original, slated-for-Broadway production. Playhouse Plaza, Main St., Nyack, NY 10960, (845) 358-6333.

## **The Playhouse on Main**

Community-based performance venue offering readings, new plays, and classes in theatre arts. 94 Main St., Nyack, NY 10960, (845) 358-9494.

## **IMAX Theatre**

Palisades Center, 4270 Palisades Center Dr., West Nyack, NY 10994, (845) 353-5555.

## **Penguin Repertory Co. Barn Playhouse**

An Equity theatre specializing in cutting-edge, small-cast productions. A renovated barn, lovely patio and superb theatrical experiences. Crickettown Rd., Stony Point, NY 10980, (845) 786-2873.



Join Us on the Hudson—  
the Most Beautiful River  
Valley in the World! Bring  
Your Canoe or Kayak and  
Launch at Emeline Park,  
Nyack Beach State Park  
and Piermont.

## Boat Rides:

### **Hudson River Sloop Clearwater**

This work boat, launched in 1969, sails the Hudson with a variety of environmental programs and celebrations. To book a private or established sail, or to receive a sailing schedule, call (845) 454-7673 or email [office@clearwater.org](mailto:office@clearwater.org).

### **The M/V Commander (Hudson Highland Cruises)**

Commander is a rare design link between the heavily built-for-steam boats of the late nineteenth century and the more lightly built vessels of the twentieth century. It was listed in 1984 on both the State and National Registers of Historic Places and is also listed in the International Register of Historic Ships, Great American Ships and the Dictionary of American Fighting Ships. It may be chartered for private parties and excursions. 29 Drew Rd., Fort Montgomery, NY (845) 534-SAIL.

**Parks: Call for Our Hiking, Biking, Walking, Talking Brochure. (845) 708-7300.**



### **Tallman Mountain State Park**

Hiking, biking, track fields, tennis, picnicking, swimming pool. Open 8 a.m. to dusk. Route 9W, Palisades, NY 10964, (845) 359-0544.

### **Nike Overlook Park I and II**

Situated atop Clausland Mt., scenic overviews, picnic-

ing, open play areas, camping overnight for groups by permit. Open dawn to dusk. Tweed Blvd., Orangeburg, NY 10962, (845) 359-5100.

### **Blauvelt State Park**

Picnic areas, hiking. Dawn to dusk. Highland Ave., Greenbush Rd., Blauvelt, NY 10913, (845) 786-2701.

### **Clausland Mountain**

Hiking, nature trails, Long Path hiking trail. Mountain Rd., Blauvelt, NY 10913, (845) 359-5100.

### **Tackamack North & South Park**

Parking, hiking trails and picnicking. The Long Path traverses both parks. Dawn to dusk. Clausland Mt. Rd., Blauvelt, NY 10913, (845) 359-5100.

### **Nyack's Memorial Park**

Playground, tennis, boat launch, bird watching, butterfly sanctuary. At the foot of Depew Ave., (845) 358-0548.

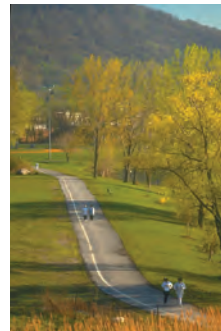
### **Hook Mountain State Park**

676 undeveloped acres, hiking, biking, picnicking. East of Rockland Lake State Park, accessible from the end

of N. Broadway in Upper Nyack, NY 10960. Open dawn to dusk, (845) 268-3020.

### **Nyack Beach State Park**

61 acres, accessible from Upper Broadway, Upper Nyack. Fishing, cross country ski trails, ball fields, hiking trail two miles along river from north end of parking lot to Hook Mt. Long Path Hiking Trail. Open dawn to dusk. End of N. Broadway, Upper Nyack, NY 10960, (845) 268-3020.



### **County Court House and Dutch Garden**

Art Deco architecture and 3-acre formal garden with intricate brickwork and tea house. Main Street, New City, NY 10956, (845) 364-2670.

### **High Tor State Park**

Hiking, picnicking, swimming pool. Open dawn



## Directions:

Rockland County is 16 miles north of New York City. It's located on the west bank of the Hudson River just north of the New Jersey border. For directions to specific sites, see the map on the inside of this brochure or call Rockland County Tourism at (845) 708-7300.

**By Boat:** New York Waterway 1-800-53-FERRY (33779).

**By Ferry:** Haverstraw to Ossining Ferry. High Speed Commuter Ferry—NY Waterway. 14 trips daily-free parking at Haverstraw Ferry Landing, Dr. Girling Dr., Haverstraw, NY 10927, 1-800-53-FERRY.

**By Bus:** Transport of Rockland (TOR) (845) 364-3333.  
Rockland Coaches (Red & Tan) (845) 356-0877.  
Short Line 1-800-631-8405.  
Clarkstown Mini-Trans (845) 623-0667.  
T.R.I.P.S. (Sr. citizens & people with disabilities) (845) 364-8747.

**By Train:** Metro-North, 1-800-638-7646.  
New Jersey Transit, (973) 762-5100.

**Nearby Airports:** Stewart, Westchester, Kennedy, LaGuardia, Newark 1-800-295-5723.

### **Boat Rentals (rowboats, canoes, kayaks, paddle boats):**

Bear Mountain State Park, (845) 786-2701.  
Paradise Boat Rental. Nature preserve on Sparkill Creek. Access to Hudson River. Paradise Avenue, Piermont, NY 10968. (845) 359-0073.  
Rockland Lake State Park, (845) 268-3020.

**Bike Rentals:** Congers Bike Shop, Congers, NY. (845) 268-3315.  
Piermont Bicycle Connection, Piermont, NY. (845) 365-0900.

**Map Site Photos:** Mayor Bud Wassmer.

Funded by the County of Rockland and:

Hudson River Valley Greenway

I Love New York

Dept. of State Quality Communities

Rockland Riverfront Communities Council  
Rockland County Tourism Department  
18 New Hempstead Rd., New City, NY 10956  
Tel: 1-800-295-5723, (845) 708-7300  
Fax: (845) 708-7310 [www.rockland.org](http://www.rockland.org)



We recommend that you call before visiting any listed facility for possible changes in hours of operation. Please also call for information relative to accessibility for persons with disabilities.

© 2004 Rockland Riverfront Communities Council.