



REVIVING
and
REBUILDING
ROCKLAND

Rockland County, NY

State and Local Fiscal Recovery Funds

2024 Report

The County of Rockland
2024 Recovery Plan

Contents

General Overview	5
Executive Summary.....	5
Use of Funds.....	6
Use of Funds Continued.....	8
Recovery Plan - INDIVIDUAL	9
Data, Surveys, and Research	9
Recovery Plan - INTERPERSONAL	11
Community and Peer Relationships- Violence Prevention Interventions.....	11
○ Expansion of the Youth Employment Program (YEP)	13
○ Expansion of Youth Academy and Youth Police Initiative (YPI) Program through the GREAT model.....	14
● Partner with Sheriff Department for Gun Buy Back Program	15
Recovery Plan - COMMUNITY	18
Long-term Housing Security: Affordable Housing	18
● Affordable Passive Housing	19
● Housing Loan Fund.....	19
● Preservation of Affordable Housing Units	19
● Predevelopment Activity and Land Acquisition	19
● Marketing and Education Campaign	20
Promoting Community Health & Safety	20
● Rockland County Urban Green Spaces.....	21
● Rockland Resilient Path	22
Assistance to Small Businesses.....	23
● Reviving Rockland Restaurants Grant Program.....	23
● Small Business Rescue Reimbursement Grant Program	24
Assistance to Nonprofit Organizations	25
● Food Security Grant Program	25
● Nonprofit Rescue Reimbursement Grant Program.....	25
Recovery Plan - ORGANIZATIONAL	26
Public Health Projects	26

Personal Protective Equipment (PPE Bags)	26
Public Health Capacity in our Hospitals	26
Mental Health	28
• Restructuring Rockland’s Resources- 911 Diversion Program	29
Recovery Plan - COUNTY/POLICY	31
Administrative/Studies	31
Studies and Software.....	32
• County of Rockland Comprehensive Plan	32
• AmpliFund	32
• Regional eSourcing Software	32
Promoting Equitable Outcomes	33
Community Engagement	34
Project Inventory - Overview	37
Project Inventory - Completed Projects	41
Project PH: 001 Personal Protective Equipment	41
Project 1.5: HP - Hygiene Packs.....	42
Project 1.7: GSH Reimbursement - GSH Equipment Expenses Not Covered by FEMA.....	43
Project 1.7: GHS EMRN - GSH - Electronic Medical Record Network Implementation	46
Project 2.29: SB - Small Business Rescue Reimbursement Grant Program	50
Project 2.34: FS - Food Security Grant Program	52
Project 2.34: NFPRR - Nonprofit Recovery Reimbursement Grant Program.....	54
Project 1.11: TI - Transformational Impacts - Youth Employment Program	56
Project 2.22: SUP - Rockland Riverway Trail - Feasibility Study.....	60
Project RR: 004 - Community and Affordable Housing Needs Assessment.....	62
Project Inventory - Active Projects	66
Project 1.8: RRR - Reviving Rockland Restaurant Grant Program	66
Project 2.22: RRRROS - Rockland Resilient Recreation Grant Program	68
Project 1.11: TI 2 - Transformational Impacts Program HAAC Youth After School Enrichment Program	70
Project 1.11: TI 3 - Transformational Impacts Program - Spring Valley Youth Police Initiative	72
Project 1.12: 911DS - 9-1-1 Dispatch Software.....	75
Project 2.34: FSE - Food Security Equipment Reimbursement Grant	77
Project 6.1: SVHDFC - Spring Valley Housing Development Fund Corporation.....	79
Project 6.1: RR - 001 - Land Acquisition - Eberling Property.....	81

Project RR: RLF - Revolving Loan Fund	83
Project 8: AF SP LHPCM - Stony Point Lowlands Hills Park Climate Mitigation Efforts	85
Project: RR- GSH CCLCS - Good Samaritan Hospital Cardiac Catheterization Laboratory Construction Support.....	87
Project 7.1: eSCMS - eSourcing and Contract Management System	89
Project Inventory- Incoming Impactful Initiatives.....	90
County Comprehensive Plan.....	90
30 West Street - Haverstraw, NY - Affordable Housing by Westhab.....	90
Land Acquisition of 55 Schriever Lane - New City for Affordable Housing	91
Rockland Riverway Trail - Design and Engineering Services	91
Phase 1: Cropsey Farm Walking Path*	92
Phase 1: Demarest Kill Park to Dutch Gardens Walking Path*	92
Phase 1: Kennedy Dells Lighting*	92
Use of Evidence	94
Evidence Resources by Expenditure Category	94

General Overview

Executive Summary

The American Rescue Plan Act (ARPA) funding has had a significant impact on Rockland in providing essential financial support in the wake of the COVID-19 pandemic. The funding has enabled the County to respond to the immediate impact of the pandemic while also making strategic investments in its long-term recovery and resilience. The flexibility of the funding has allowed the County to tailor its spending to local needs, ensuring that support is both effective and equitable.

With the infusion of ARPA funds throughout the inception of the program into the County's communities, the County has been able to drive sustainable recovery, support vulnerable populations, and invest in critical infrastructure and public services. By strategically allocating these funds across key areas such as economic recovery, health and human services, small businesses and not for profits, housing, and infrastructure, Rockland is laying the foundation for long-term sustainable growth and a brighter future for its residents.

As the County continues to navigate through the SLFRF expenditures, it will continue to conduct participatory meetings with various stakeholders. The County, all branches of Government, and community members/organizations, share a common goal of successfully reviving and rebuilding the County of Rockland. The entire County was impacted in one way or another by the pandemic, with some communities being disproportionately affected. Together, we will maintain a focus on promoting resilience, bridging County-wide gaps, fostering mutual working relationships, and establishing community level buy-in to build a healthier and sustainable environment within the County of Rockland for generations to come.

"There is not a single person who was not impacted in some way, shape or form by the COVID-19 pandemic. While we have made great progress in recovering from the multi-faceted impacts of COVID-19 we must do more to support our families, local organizations, businesses and first responders.

To ensure our recovery stays on track, we will utilize the \$63.18 million in funding Rockland is receiving from the American Rescue plan for programs encompassing everything including mental health services, food security initiatives, support for businesses and frontline workers, and affordable housing.

These programs will help ensure our economic recovery stays on track and we encourage all eligible entities to apply as soon as possible. These last two years have been difficult for all of us and we in County government are doing all that we can to Revive and Rebuild Rockland."

- County Executive Ed Day, County Legislature Chairman Jay Hood Jr.

Use of Funds

Rockland, like many areas in New York State, experienced significant impacts from COVID-19. The pandemic's effect on the county was multifaceted, involving high infection rates, healthcare system strain, economic repercussions, and social disruptions. The county saw substantial COVID-19 infections, particularly in the early stages of the pandemic; having had one of the highest per capita infections and mortality rates in the state during the early outbreaks, resulting in tremendous pressure and strain on our local healthcare facilities and resources. Businesses, particularly small businesses, suffered due to the lockdowns and restrictions. Many faced closure or reduced operations, leading to job losses and financial instability for many residents.

The pandemic exacerbated mental health issues due to factors such as isolation, economic stress, and health fears. There was notable increase in anxiety, depression, and other mental health conditions among residents. Substance abuse and related disorders also increased as a coping mechanism for some. Social activities, community events, and public gatherings were significantly curtailed, affecting community cohesions and individual well-being. Vulnerable populations, including the elderly and those with preexisting conditions, faced heightened risks and isolation.

As we continue to shift out of the pandemic, Rocklanders are still faced with the aftermath of COVID. Many residents are experiencing long-term health issues due to their infections, including "long COVID," cardiovascular complications, cognitive difficulties, respiratory problems, and fatigue.

Rockland County's experience with COVID-19 underscores the broad and deep impacts of the pandemic on local communities, highlighting the need for ongoing public health efforts, economic support, and mental health resources to address both immediate and long-term consequences.

The County of Rockland, through the ARPA Department, has continuously emphasized inclusive and collaborative engagement among various stakeholders within each community. This strategy involves local governments, community organizations, businesses, and residents working together to identify the priorities and develop solutions that address the diverse needs of the population. Observing the issues through the many lenses of our community and evaluating our solutions through the complexities of the many social determinants of health within our County, we created a **Whole Person, Whole Community, Whole County** approach to reviving and rebuilding Rockland. The spending plan spans many diverse expenditure categories that tie into the bigger picture. By fostering broad participation and leveraging local knowledge and resources, the Whole County approach aims to ensure that the allocation and implementation of SLFRF funds are equitable, transparent, and effective in promoting long-term recovery and resilience.

One of the most important models we identified to gain perspective through the many lenses of the social determinants of health that affected our residents, was the Socioecological Framework (pictured below). The framework acknowledges an individual's behaviors and choices are influenced by multiple interconnected factors, organizes these factors into different levels of influence, identifies determinants of health and well-being that may have been

overlooked, and allows for a better understanding of the interplay of various factors. The framework is particularly valuable in addressing health disparities and promoting healthy equity, addressing more complex issues that cannot be addressed adequately through individual interventions alone, emphasizes the intricate relationship between individuals and the natural environment, and provides an essential lens through which to view and address the various challenges our County faced during the pandemic. By using this model, the County created interventions that are more effectively targeted to specific populations and settings.

REVIVING THE BUILT ENVIRONMENT



Use of Funds Continued

Developing Opportunities:

-  **Capacity Building and Sustainability:** ARPA funds offer the County an opportunity to invest in projects that contribute to a robust, resilient, and sustainable infrastructure and society, capable of withstanding future challenges and ensuring long-term success. The funds have been used to improve and enhance community resilience and support long-term economic growth, while also supporting and improving the County's capacity to transform its daily operations.
-  **Health and Human Services:** The ARPA funding presents a lifeline for Rockland County's health and human services sector. The allocation of funds towards public health initiatives, mental health services, and healthcare infrastructure improvements enhance the County's ability to respond to future health emergencies and improve overall community well-being.
-  **Housing:** Investing in affordable housing, communities can create a foundation for long-term economic, social, and environmental sustainability, improving the quality of life for countless individuals and families.
-  **Infrastructure and Resilience:** ARPA funding offers an opportunity to invest in critical infrastructure projects that enhance the County's resilience to future challenges. This includes mitigating climate change risks, promoting sustainable development, building safer neighborhoods, and investing in community buy in and relationships.
-  **Small Business Support:** ARPA funds play a pivotal role in assisting small businesses and fostering entrepreneurial growth. Through grants, the funding helped local businesses recover from the economic impacts of the pandemic, adapt to changing market conditions, and drive innovation.

Recovery Plan - INDIVIDUAL

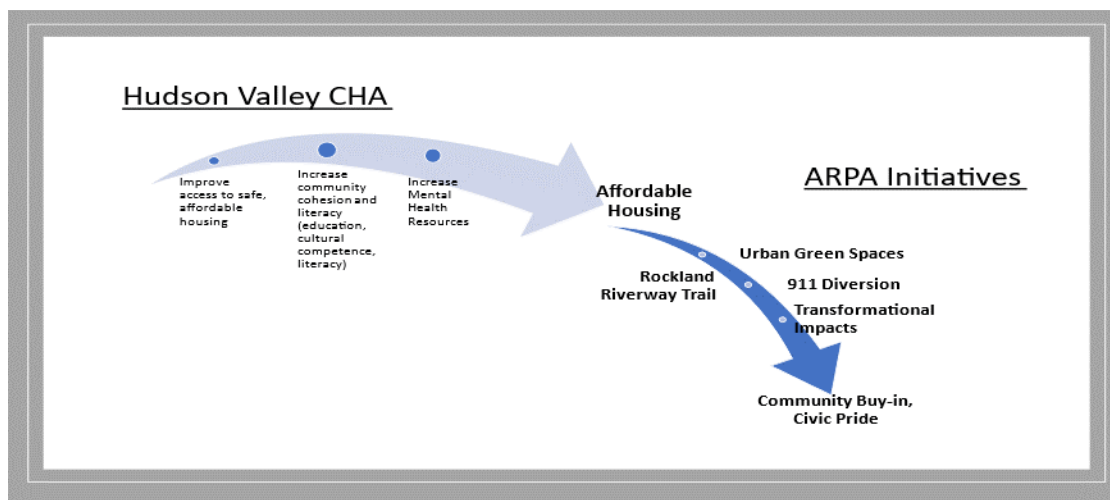
Data, Surveys, and Research

Expenditure Category: 7: Administrative and Other

This level emphasizes that behavior is not just a product of personal choices but is influenced by a complex set of interactions with the surrounding environment. Understanding this level at a larger scale, through both qualitative and quantitative measures, the County has created initiatives that are tailored to the needs and contexts of specific populations.

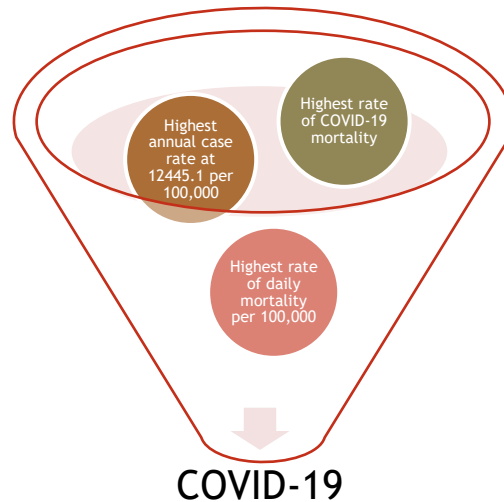
Through various data points, the ARPA Department identified the interplay of the individual to the influences of family and peers, experiences at school and within the community, and interaction with the built environment and government entities. Overall, the interconnectedness and dynamic nature of the various levels is emphasized throughout the expenditure categories of the SLFRF funds.

Initially, through a retrospective study, the ARPA Department evaluated the 2020-2022 Community Health Assessment (CHA) and the Community Health Implementation Plan (CHIP). Through evaluation of these data points, the ARPA Department identified that increased levels of chronic disease (HBP, High Cholesterol, Heart Disease), severe housing problems (26%), and physical inactivity (24%) attributed to extreme vulnerability to the pandemic.



Most recently, as the Mid-Hudson Region's 2022-2024 CHA was released, 2020 and 2021 showed Rockland County having the highest rate of COVID-19 mortality. Rockland also leads the Hudson Valley with this highest cause of death as heart disease and the highest asthma mortality rate. The built environment issues contributing to these health problems consist of Rockland having both the highest percentage of cost burdened renter occupied units and the highest percentage of severely cost burdened households in the region at 60.7% and 22.0%, respectively. Rockland County also has the highest percentage (26.0%) of households with severe housing problems. Furthermore, according to the NYS County Health Rankings,

Rockland has dropped to 7th in 2023, down from 1st in 2019 and 2020. Despite high rankings in “length of life,” the County ranks 39th in social and economic factors and 59 out of 62 in terms of physical environment. This “cocktail” of attributing health determinants led the county to the highest mortality rate per capita in the state for over six weeks during the height of the pandemic.



Mental Health concerns also demonstrated significant increases throughout the pandemic. According to the Mid-Hudson Region Community Health Assessment 2022-2024 report, evidence shows that 64% percent of Rockland County respondents indicated that their mental health and substance use was highly impacted in the past year. This was ranked as the most pressing health issue in Rockland County for 2022 and 2023.

According to the same survey, access to mental health providers was identified as the second most pressing issue that has negatively impacted the health of Rockland County residents, with 50% of the respondents identifying this as a significant issue. The leading barrier to people achieving better health in Rockland County was the lack of knowledge of existing resources, with 57.7% of respondents indicating this as a priority. The report also indicated that 24% of those surveyed indicated that their mental health worsened over the course of the COVID pandemic.

The ARPA approach is intended to identify all layers of the sociological framework to enhance the wellbeing of the residents of Rockland. Through aggregation of the data, the ARPA Department identified multiple initiatives to transform the county. With an understanding of the comorbidities and risks within our built environment that put the county at risk of devastation during the pandemic, the ARPA funding has been strategically obligated and allocated to build resilience and capacity for better health outcomes for generations to come.

Recovery Plan - INTERPERSONAL

The COVID-19 pandemic has had a profound and multifaceted impact on youth, influencing their exposure to and involvement in violence. These impacts can be understood through various dimensions of adverse childhood experiences (ACEs), which can include violence, abuse, neglect, and household dysfunction. The interpersonal level plays a particularly significant role in assessing youth and their environment. This level focuses on relationships with family, friends, peers, and close contacts. Through a CATWOE (Customer, Actor, Transformation, Worldview, Owner, Environment) analysis of the data, ARPA funding was allocated towards programs that not only assesses the risk youth face, especially those from low to moderate income, but also encourage a stronger peer support group.

Customer	Disproportionately impacted youth in Rockland County, predominately in Spring Valley and Haverstraw
Actors	HAAC, YPI
Transformation	Stronger relationships between youth and police, stronger after school and summer youth programs to keep youth off the street
Worldview	Decrease in youth crime, increased relationship between youth and police, better youth outcomes in school and work
Owner	ARPA
Environment	Youth participation, financial sustainability, risk of duplication of funding

Community and Peer Relationships- Violence Prevention Interventions

Expenditure Category: 1: Public Health

Preventing and responding to Community Violence is paramount in ensuring a safe built environment. As referenced in the **Final Rule**, Community Violence is a public health challenge that was exacerbated by the pandemic and has disproportionately impacted low-income communities. Exposure to violence can create serious short-term and long-term harmful effects to health and development, and repeated exposure to violence may be connected to negative health outcomes. Addressing community violence as a public health issue may help prevent and even reduce additional harm to individuals, households, and communities.

Youth are most at risk for violence and gang involvement due to a combination of social, economic, psychological, and environmental factors. Youth from impoverished backgrounds often face limited access to education and recreation opportunities. These conditions can make gang involvement appear attractive as a means to achieve financial stability, social status, or a sense of belonging. Youth that come from a dysfunctional family environment, including neglect, abuse, and lack of parental supervision and support, can push them towards gangs. When

youth experience peer influence to gain acceptance and avoid social isolation, or when they live in a neighborhood with higher levels of crime, violence, and gang activity, they are more likely to become involved in gangs and violent and dangerous activities.

Even prior to the pandemic, the Village of Spring Valley, and the Village of Haverstraw have dealt with the highest crime rate, especially with youth under the age of 18. The largest uptick both municipalities saw was from 2021-2022.

In 2020 the County of Rockland, led by our Department of Social Services, surveyed the community to identify trends believed to be the cause in the uptick in community violence. Respondents varied from young adults/parents to community members/government agencies that encompassed a wide range of our towns, villages, and municipalities. The survey asked a variety of questions to determine a sense of how this current focusing event has affected our communities and asked for solutions that many believed could help alleviate the issue. While aggregating the data, the County found a large majority stated that drugs, gangs, easy access to guns, poverty, lack of youth programming, lack of social cohesion, and an unsafe built environment were the predominant contributing factors towards the increase in community violence. Solutions believed to potentially eradicate this ever-growing concern would include a focus on cultural competence, community buy-in, and constructing a better, safer built environment.

In 2023, The ARPA Department surveyed the residents again and the following trends remained:

- **Concerns**
 - Glamourizing violence
 - Gangs/drugs
 - Easy access to guns
 - Cyberbullying
 - Poor relationship with Law Enforcement

- **Desires**
 - Safer Neighborhoods
 - Safer school environment
 - More police presence
 - Better relationship with law enforcement

- **Partnerships**
 - Law Enforcement
 - Community Organizations

Our method uses public health frameworks and evidence-based practices to interrupt the spread of violence. The *Transformational Impacts Program* identified the root cause of violence in individuals, households, and communities with nationally recognized, evidence-based methodologies (Community Youth Mapping, CURE Violence Global Framework). Through a better understanding of the complex interplay between the many levels of the SEF, the equity focused initiative will mediate historic and present conflicts, transform thinking and behaviors of those at the highest risk, change the norms that support violent activity, provide de-escalation training, and provide consistent and accessible support to sustain the positive

transformation. Through a multi-level stakeholder (Law Enforcement, Youth, Families, Schools, Community Based Organizations, Government Entities) assessment, it is our hope that addressing and healing generational and environmental trauma will help to provide a safe atmosphere and restore a sense of trust and pride for our communities for many generations to come. This program supports our overall strategy and goal to create a stronger, resilient, more sustainable County. The following programs have been implemented or expanded to support the efforts of the *Transformational Impacts Program*:

- **Expansion of the Youth Employment Program (YEP):** Since 1994, the Rockland County Youth Bureau has administered the Youth Employment Program, YEP, a workforce preparation initiative that provides employment training and job placement to eligible youth. The program's purpose is to help youth aged 14-24 gain invaluable life skills so that they can be professionally prepared and advanced for life's hurdles. The Youth Bureau operates on the principles of positive youth development. This framework focuses on strengths and positive outcomes, youth voice, and engagement, strategies that involve youth, long-term commitment, community involvement, and collaboration.

Eligible youth submit the YEP application and are then contacted for an interview with program staff. During the interview process, youth are assessed for job readiness. Youth deemed ready for employment are placed directly with one of our employers. Young people requiring job training are invited to participate in our T.E.E.N Works program and other job readiness training workshops.

The Youth Bureau also relies on our community partners and employers to create positive developmental relationships with our young people. Developmental relationships are created by expressing care, challenging growth, providing support, sharing power, and expanding possibilities for young people.

Previously, YEP was funded only by the *New York State Office of Temporary and Disability Assistance* through the *Department of Social Services*. This funding was awarded on an annual basis which allows us to run our program from May 1 through September 30 but only for young people whose families meet the TANF qualifications.

With the addition of SLFRF funding, the Youth Bureau had been afforded the opportunity to widen their audience to all impacted youth within the county and become a resource for all youth looking for employment opportunities. The YEP was able to double its size and remain a viable employment opportunity to our youth, ages 14-24, all year long. More youth from around the County have been enrolled in the T.E.E.N Works program and more employers have signed up to participate in employment opportunities. Through successful youth employment fairs, the YEP had reached youth beyond their previous years and has offered additional financial literacy, life skills, and job training programs.

The program so far has shown successful outcomes such as:

- Increased attendance at both work and school
- Increased communication and job skills
- Improvement in grades
- Promotional job placements
- Enhanced understanding of community

*Since the expansion of the YEP program to all youth in Rockland, our one-year assessment of the success of the program demonstrated that youth who are TANF qualified benefitted most from the year-round employment program. It was noted that youth that would not otherwise qualify for employment opportunities only benefited from the program in the summer months.

After evaluation of the data, it was determined that the YEP program for youth that would not otherwise qualify for employment opportunities would no longer be paid for with ARPA funding. It was the intention of the ARPA Department to continue funding year-round employment opportunities for TANF qualified youth, but to the excitement of the Youth Bureau, NYS Office of Temporary and Disability Assistance awarded funding for year-round employment. To avoid duplication of funds, ARPA funding is no longer being provided to the Youth Bureau for this program.

- **Expansion of Youth Academy and Youth Police Initiative (YPI) Program through the GREAT model:** Youth & Police Initiative or YPI, is a training program created by the Massachusetts-based North American Family Institute to enhance police officers and prosecutors understanding of the beliefs, values, and experiences of local youth, while ensuring that youth develop a genuine regard for the challenges that police officers face on the job.

YPI provides structured dialogue, team building and role-playing scenarios that allow all participants – youth, educators, police, and prosecutors – to tackle the real and hard issues of crime prevention and community policing. YPI is an opportunity for Rockland County’s police departments to increase their visibility in their communities and to bring about positive changes in their relationships with local at-risk youth.

Throughout the Country, every YPI program is adapted to fit the specific needs of the community being served. The Village of Spring Valley’s Youth and Police Initiative’s objectives are:

- Discuss Social & Political issues and how these issues impact residents of all ages;
- Enhance officers’ community policing skills;
- Strengthen prosecutors’ knowledge of the community;
- Build long-term positive relationships between local police, prosecutors, and Rockland County’s at-risk youth;
- Create links to positive, pro-social community resources by having guest speakers come to classes;
- Create possibilities for mentorship;
- Facilitate ways for youth to learn about career paths in Public Safety

The YPI program is a six-day program that ends with a graduation gathering that includes food, fun and awards. But that is not the end. This program brings people together in a family like atmosphere that continues to support each other after graduation by continuing communication via group chats along with other bonding activities such as:

- Organized sporting events

- Movies under the stars
- Dancing under the stars
- Special guest lecturers
- Community Projects
- Trips

The Spring Valley's YPI has successfully brought youth and law enforcement together to participate in life skills training, build mutual respect, foster a better working relationship, and tear down the barriers that has led to lack of trust within communities, especially those most at risk.

Using the well respected and trusted officers of the YPI program, who act as interrupters within the community, the program is expanding to continue the focus on the GREAT model it is derived from. Summer sessions will be implemented to keep the most at risk youth off the street. The sessions will include:

- Goal setting
 - Decision Making
 - Communication skills
 - Refusing skills
 - Dealing with peers
 - Family conflict
 - Mental Health
 - Self-image
 - Juvenile law and procedures
 - Cultural awareness and sensitivity
 - Career exploration
 - Self defense
- **Partner with Sheriff Department for Gun Buy Back Program:** To facilitate in reducing the number of guns in circulation, promote community safety and violence prevention, have a positive impact on public health, and garner trust between community and law enforcement, SLFRF funds will be used to hold two gun buyback programs throughout the County.

The two most recent gun buyback events the Sheriff Department has hosted has resulted in over 100 guns being taken off the street. The guns have included, assault rifles, handguns, rifles, shotguns, and antique or non-working guns.



- **YPI/Community Vans:** Transportation is a critical factor for at-risk youth to access community programs, offering numerous benefits that support their development and well-being. Ensuring that the YPI program, in partnership with the Rockland Sheriff Department, has adequate transportation options for their youth programs allow for the following:
 - **Program Participation-** reliable transportation ensures at risk youth can regularly attend community programs, which might otherwise be inaccessible due to distance or lack of public transportation.
 - **Equal Opportunities-** levels the playing field, providing all youth, regardless of their socio-economic background, equal access to valuable resources and support systems.
 - **Safety-** organized transportation services provide a safe means for at-risk youth to travel to and from programs, reducing their exposure to potentially unsafe environments or situations.
 - **Supervision-** adults running the program will be supervising and monitoring during transit.
 - **Consistent Attendance-** when transportation is not a barrier, youth are more likely to attend programs consistently, allowing them to fully benefit from the activities and support offered.
 - **Program Retention-** reliable transportation helps retain youth in programs over time, fostering long term engagement and positive outcomes.
 - **Skill development-** access to programs via transportation enables youth to participate in educational, recreational, and vocational activities that develop their skills and competencies.
 - **Social Connections-** transportation facilitates attendance at community programs where youth can build positive relationships with peers and mentors, enhancing their social support networks.

- **Mental Health-** Regular participation in structures programs can provide emotional support and stability, positively impacting mental health.
- **Educational Support-** community programs can enable youth to seek out enrichment programs and preparation classes for higher education and future careers.
- **Cultural Exposure-** Access to programs can expose youth to diverse cultural experiences and broaden their horizons, promoting inclusivity and empathy.

Transportation is a vital component for ensuring at-risk youth can access and benefit from community programs. It promotes safety, engagement, development, and well-being, ultimately supporting their growth into healthy, productive members of society.

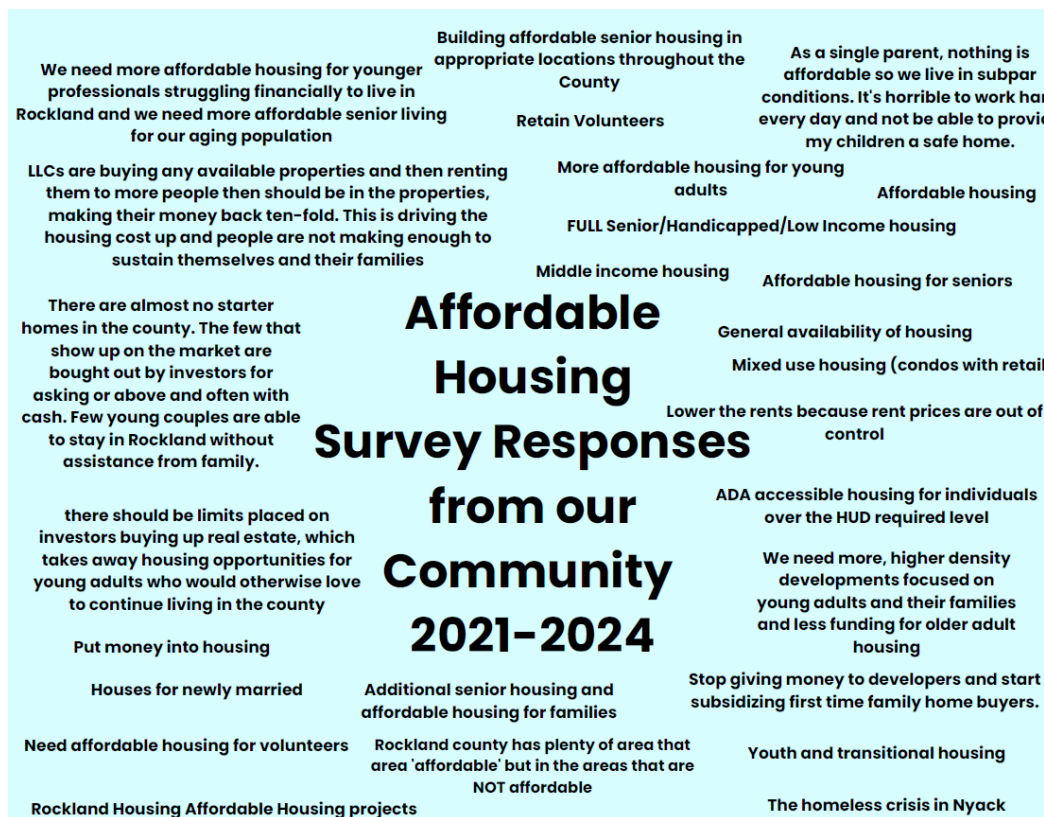
Recovery Plan - COMMUNITY

The Community level of the SEF is the most crucial level to accomplish capacity building and sustainability. It is the critical juncture where policymakers and residents come together to build new opportunities. This level examines the settings in which social relationships occur—such as neighborhood, school’s workplaces and community organizations, the built environment. By examining the built environment, which shapes the daily experiences and long-term outcomes for individuals and communities, the ARPA funded programs will foster a healthy, safe, economically vibrant, and sustainable County.

Long-term Housing Security: Affordable Housing

Expenditure Category: 2: Negative Economic Impacts

As we begin to revive and rebuild the County through the built environment, the need for affordable passive housing is evident in both our impacted and disproportionately impacted communities. According to the most recent ARPA survey (June 2024), and like past surveys, the most common response to community need was affordable housing, in both availability and safe options. Our programs under this expenditure have built an extensive housing portfolio that demonstrates the multifaceted approach to affordability.



- **Housing Needs Assessment:** To better understand the current housing trends that are in Rockland and its impacts on our residents, the ARPA Department funded a Housing Needs Assessment (HNA). Conducting the housing needs assessment was a crucial

first step to understanding and addressing the housing challenges within all our communities. The data gathered from the assessment helped the ARPA Department identify the following:

- Understanding needs- Current housing demands
- Supply Analysis- Gaps between existing supply and the needs of the population.
- Strategic Planning- Identify infrastructure needs and address disparities.
- Stakeholder involvement- Develop transparency and trust within all communities.
- Economic impact- Identify the Average Median Income (AMI) of our residents in all municipalities, the rent and housing cost burden.

The County's Housing Needs Assessment (HNA) findings included:

- Nearly 60% of homes in Rockland are single-family detached homes averaging \$700,000.
- The median household income in Rockland is \$100,000, qualifying for a \$260,000 mortgage.
- A housing deficit of 4200 units for those making under \$60,000.
- More than 40% of Rocklanders spend 30% or more of their household income on housing.

The ARPA Department identified the top two initiatives it would support to catapult the county into a new affordable housing plan.

- **Affordable Passive Housing**- the ARPA Department developed a wide range of opportunities for affordable housing, that included preservation, land acquisition, predevelopment, and sustainability opportunities.
 - **Housing Loan Fund**- Utilizing \$13.5 million for a housing loan fund will address various housing related challenges and funds are eligible for use for the following:
 - Construction financing
 - Acquisition financing
 - Predevelopment financing
 - Property stabilization
 - **Preservation of Affordable Housing Units**- Funds will be used to gap fill on construction loans to secure all affordable units remain and families are not displaced. Improvements to properties will also ensure buildings are up to code and infrastructure is safe.
 - **Predevelopment Activity and Land Acquisition**-Properties would be acquired to promote affordable Essential Worker and Community Workforce housing. A percentage of the property would also be designated as open space to emphasis on positive health outcomes through urban green space opportunities. The acquisition would maintain an importance on the promotion of healthier populations, healthier outcomes, healthier economy, and improved infrastructure for the current and future residents.

- **Marketing and Education Campaign-** To ensure an improved literacy around safe, affordable housing is developed, and residents become aware of the new opportunities, a marketing and education campaign will be launched in August 2024 to reach all residents.

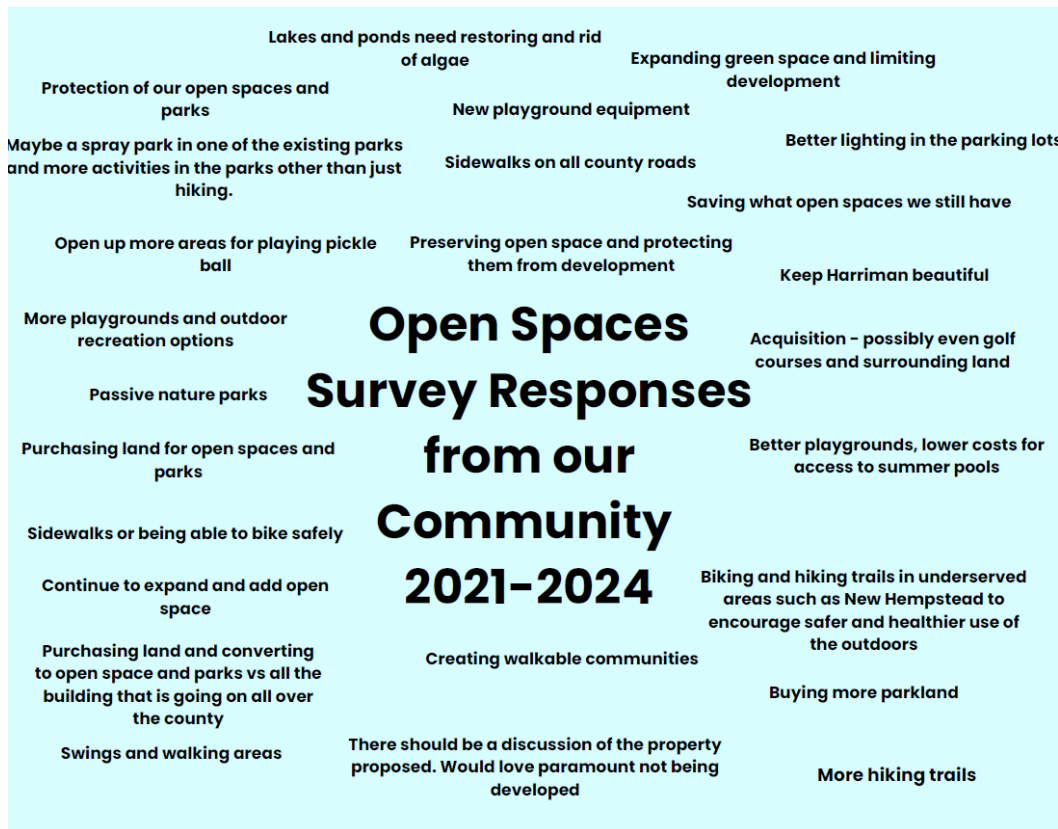
Through the development of new housing opportunities via our proposed SLFRF allocation, the County will evaluate and promote the following:

- Healthier population, healthier outcomes, and healthier economy
- Improved infrastructure
- Improved perception of affordable housing
- Increased opportunities for younger adults, seniors
- Increased collaboration and participation at a multi sector level

Promoting Community Health & Safety

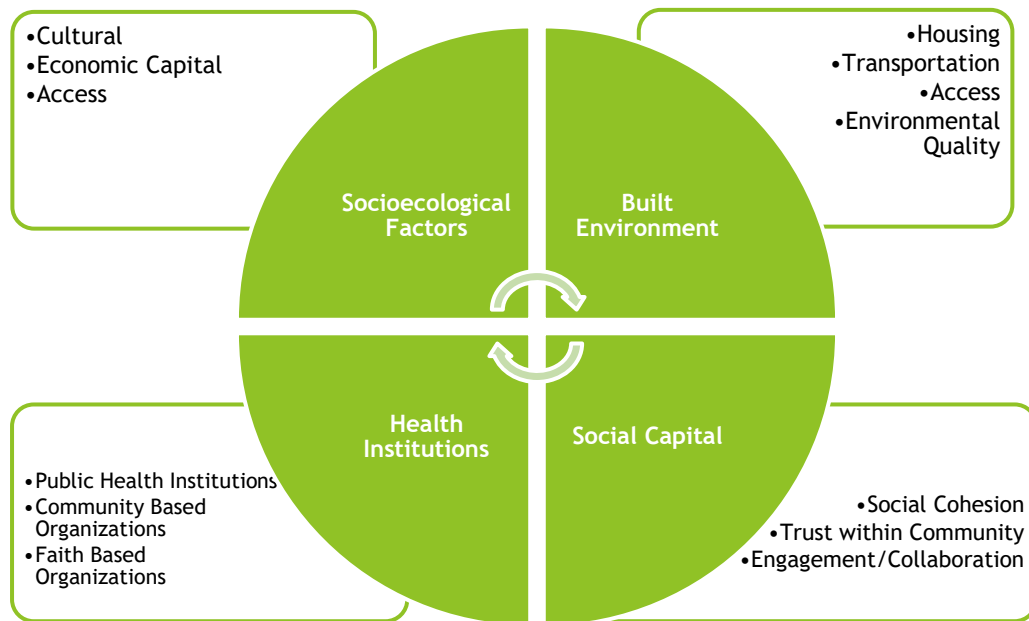
Expenditure Category: 2: Negative Economic Impacts

Neighborhoods are key determinants to health. When understanding how to improve better health outcomes, especially at a community level, the built environment and its social characteristics can shape opportunities for barriers or promotion to overall health, especially in disproportionately impacted communities. When identifying interventions, they should be community oriented, allowing for buy-in from the residents themselves. Through creation of a more empowered and resilient community, the interventions will be more sustainable via community “ownership.”



The proposed ARPA expenditure is a County- wide, all-encompassing project to improve the built environment. Defined by the CDC as all the physical parts of where we live and work (e.g., homes, buildings, streets, open spaces, and infrastructure), the built environment influences an individual and community’s public health. According to the **Final Rule**:

*“Treasury recognizes the connection between neighborhood-built environment and physical health outcomes, including risk factors that may have contributed to disproportionate COVID–19 health impacts in low-income communities. The **Final Rule** also recognizes that the public health impacts of the pandemic are broader than just the COVID–19 disease itself and include substantial impacts on mental health and public safety challenges like rates of violent crime, which are correlated with a neighborhood’s-built environment and features. As such, neighborhood features that promote improved health and safety outcomes respond to the preexisting disparities that contributed to COVID–19’s disproportionate impacts on low-income communities.”*



Through Treasury’s outlined expenditure category: Negative Economic Impact and through a THRIVE model method (pictured above), the ARPA department is proposing a whole county, whole community approach through the following projects:

- **Rockland County Urban Green Spaces:** To create sustainability, it is critical that the residents of Rockland have supportive buy-in to the revitalization project. By creating open spaces/community gardens/parks/ playgrounds, the communities’ built environment will improve and capacity to move about the County will be more accessible than ever before. More importantly, communities have more ownership within their neighborhoods, helping in the overall concept and design of the new proposed area. These open spaces will integrate communities, fostering mutual respect of the many diverse cultures that make up the County to create a larger connection of partnerships

and cultural competence, while promoting Rockland's rich history through educational programs. With development of various open space concepts/green infrastructure around the County, the following will occur:

- Multi sector collaboration (e.g., County Departments, Municipalities, Not for Profits)
- Educational programs year round
- Historical Tours of Rockland- link the entire county to its roots and to itself
- Outdoor activity promotion- physical activity, STEM programs
- New art and themes to each space, more representation
- Safer walking and biking throughout the County of Rockland

To date, throughout the County of Rockland 34 parks/playgrounds have been awarded totaling **\$6,263,000.00**. All parks/playgrounds offer equitable access, free admission, and promote healthy outcomes for all County Residents.

- **Land Preservation Plan:** Balancing land preservation with the need for affordable housing is critical for sustainable and overall societal wellbeing. Understanding the delicate relationship encompasses environmental, economic, and social aspects. The county, ranking 59th in built environment, must take a critical step in ensuring that open space is preserved to create environmental sustainability that protects its ecosystems and biodiversity, regulates climate change, protects lands that include watersheds that are vital for clean drinking water and wetlands that filter pollutants and regulate water cycles, help prevent soil erosion and maintain soil fertility, provide passive recreation, and preserve protected lands. Providing funds for open space opportunities, while also investing in affordable housing development enhances opportunities for social equity, sustainable development, health and wellbeing, community cohesion, smart growth, and resilience.
- **Rockland Resilient Path:** To promote healthy activities, education, and expand accessibility within the County, the project will create and connect a walking and bicycling path, which is also handicapped accessible, potentially catalyzing improvements that could further enhance the physical environment and related social determinants of health. The location of the path will include many Towns and Villages, from the southernmost portion of Rockland County (Palisades, NY) to the northern most portion of Rockland County (Stony Point, NY), falling directly in the some of the most disproportionately impacted communities in Rockland. Throughout this pandemic, Rockland County has seen a significant increase in bike riding, walking, and running from residents as well as community members from surrounding areas in the Hudson Valley, but it was not always accessible to our own residents.

The **Rockland Resilient Riverway Trail** is intended to integrate communities from all over Rockland, invite visitors to learn of the cultural and historical stories of our County, provide additional modes of transportation, highlight environmental sustainability, and assist in improving economic development and supporting our small businesses. While creating a shared use path, it is important to evaluate the existing infrastructure and identify areas of low activity to determine potential social determinants of health that inhibit opportunities to physical activity in certain areas.

A feasibility study was conducted and completed in February 2024. The following conclusions we determined:

- The Rockland Riverway Trail is feasible
- 70% of the trail already exists but is need of improvement
- There is strong local support for this investment in the community's recreational and health opportunities
- The economic and health impacts of the trail will not only decrease comorbidities but will increase economic growth opportunities as well

In August 2024, phase 2 of the Trail will begin. It will include a robust community engagement plan with walk shops, online surveys, and community events, as well as a more detailed engineering and environmental assessment for each segment of the trail.

Assistance to Small Businesses

Expenditure Category: 1: Public Health and 2: Negative Economic Impacts

Small businesses help stimulate the local economy and play a crucial role in supporting the U.S. economic recovery. The COVID-19 pandemic has severely impacted many small businesses nationwide. Small businesses have experienced and continue to experience an undesirable outlook as the result of the COVID-19 pandemic. The County of Rockland utilized SRFLF funds to develop the grant opportunities below to assist our small businesses in their financial recovery:

- **Reviving Rockland Restaurants Grant Program:** The *Reviving Rockland Restaurants Grant Program* was established to combat the negative economic and employment impacts caused by the COVID-19 pandemic. During the height of the COVID-19 pandemic, restaurants were one of the first establishments to be shut down and the last to be open at full capacity. Results from our survey to restaurants identified that the outdoor dining option was what enabled them to stay afloat during one of their most fiscally difficult times, while keeping their entire staff, even with limited capacity. With the extreme popularity of outdoor dining options and increased capacity opportunities, the County recognized the need to keep the momentum going by creating a grant to help alleviate the additional costs of associated outdoor dining expenses. Individual grants, to reimburse past expenses or fund future expenses related to outdoor dining, have been awarded to select applicants who meet the eligibility requirements. Applicants must describe how the COVID-19 Pandemic negatively affected their business and how the eligible items helped or will help resolve the problem. They must include information about how outdoor dining sustained or helped to sustain their business, how outdoor dining helped their staff maintain employment, what percentage of their staff lives in the County of Rockland, how much their staff is paid (excluding tips), and if health benefits are available through their business for staff and their families.
 - Eligible entities are Rockland based businesses that are not permanently closed, have the capacity for outdoor dining, and include businesses where the public or patrons assemble for the primary purpose of being served food or drink including, Restaurants, Food stands, food trucks, Bars, saloons, lounges, taverns, Bakeries, Delis, Cafes, Breweries, Wineries and/or microbreweries, Other similar

places of business in which the public or patrons assemble for the primary purpose of being served food or drink.

- The **Reviving Rockland Restaurants Grant Program** provided funding for Rockland County restaurants by reimbursing qualified restaurant expenses that were or will be used for outdoor dining to aid in the prevention of the spread of COVID-19. This equipment includes, but is not limited to tents, heat lamps or other electric heating equipment, additional tables and chairs for outdoor dining, market umbrellas, plexiglass shields, tarps, patio fencing, other items related to outdoor dining, such as construction of outdoor seating and cleaning materials may be considered.

To date, the **Reviving Rockland Restaurants Grant Program** has served 25 restaurants and distributed a total of \$434,270.16 in support.

- **Small Business Rescue Reimbursement Grant Program:** The ARPA Department administered the **Rockland Small Business Rescue Grant Program** to combat the negative economic and employment impacts caused by the COVID-19 pandemic. Individual grants to reimburse past expenses will be awarded to select applicants who meet the eligibility requirements (outlined below). All Applicants were required to describe how the COVID-19 Pandemic negatively affected their business and how the eligible items helped alleviate the financial hardships experienced during the pandemic. They provided information about how this funding could help them offset revenue loss, maintain their staff employment, and (if applicable) a list of increased costs.

- Eligible businesses are Rockland County based privately owned micro-businesses, small businesses, enterprises, or sole proprietorships, that offer fee-based goods or services and have fewer than 500 employees and annual revenues up to \$1 million.
- Businesses include but are not limited to Indoor Arts, Entertainment, and Recreation, Pet Grooming, Boarding, and Walking, Restaurants, Eateries, Food Stands and Food Trucks, Bars, Bakeries, Cafes, Breweries/Wineries Catering, Delis, etc., Bookstore/Stationary, Housekeeping, Fitness Centers, Florists, General Retail, Salons/Spas, Bicycle shops, Other Consumer Service Firms (i.e., Architectural, Design, Marketing). Eligible business expenses include but are not limited to Commercial/Retail Rent (up to 6 months), Safety Investments (Including PPE and Cleaning Supplies), Software Fees, Marketing Fees (advertising and promotion), Credit Card Processing Fees (up to \$5,000.00), Supplies (operational items not inventory).

To date, the **Small Business Rescue Reimbursement** grant has served 29 small businesses and distributed a total of \$1,350,385.89 in support.

Assistance to Nonprofit Organizations

Expenditure Category: 1: Public Health and 2: Negative Economic Impacts

Nonprofits play a fundamental role in creating more equitable and thriving communities. Throughout the lifecycle of the ARPA expenditures, not for profit participation will be integrated through grant opportunities. In addition to adding funding opportunities throughout the proposed expenditure categories listed, a few individual grant opportunities will be developed:

- **Food Security Grant Program:** This grant was established to reimburse Rockland Based organizations that distributed food to communities in the County of Rockland that have been disproportionately impacted by the COVID-19 pandemic. Individual grants to reimburse past expenses were awarded to select applicants who met the eligibility requirements below. All Applicants described how the COVID-19 Pandemic negatively affected the organization and how the eligible items helped resolve the problem. They were required to include information about the statistics of the percent increase of the need for food, how the need fell in communities with socioeconomic disadvantages and a quantifiable increase in need.

Eligible entities were Rockland County Based organizations that were not permanently closed. These entities included but were not limited to Food Pantries, Food Banks, Community-based organizations, Faith-based organizations, Non-profit organizations. Reimbursing qualified expenses incurred from March 3, 2021, to the date of contract, that were used to assist communities and individuals in the County of Rockland experiencing food insecurities due to COVID-19. Eligible expenses include, but are not limited to barriers/partitions, cleaning supplies, food distribution space/pantry rental, vehicle rental.

The **Food Security Grant Program** closed for new applications on February 1, 2023. To date, the grant has served a total of 4 Nonprofit organizations and distributed \$81,240.80 in support.

- **Nonprofit Rescue Reimbursement Grant Program:** Developed to combat the negative economic and staffing impacts caused by the COVID-19 pandemic. Individual grants, to reimburse past expenses or fund future expenses will be awarded to select applicants who meet the eligibility requirements. All Applicants were required to describe how the COVID-19 Pandemic negatively affected their organization and how the eligible items helped alleviate the financial hardships experienced during the pandemic. They must include information about how this funding could help them offset revenue loss, maintain their staff, and (if applicable) a list of increased costs.

Eligible Not-Profits must be Rockland based. Eligible expenses include but are not limited to Rent (up to 6 months), Safety Investments (Including PPE and Cleaning Supplies), Software Fees, Increased Costs for Supplies (operational items, not inventory).

The **Nonprofit Rescue Reimbursement Grant Program** officially opened on April 1, 2023, and closed on September 30th, 2023. In that time, 14 organizations were funded and \$463,193.13 was expended to provide critical support.

Recovery Plan - ORGANIZATIONAL

The organizational level focuses on the influence of formal organizations and institutions where people work, learn, and engage in various activities. These settings play a critical role in shaping individual behaviors and outcomes by establishing norms, policies, and practices. This level underscores the importance of the environments created by organizations. Effective interventions at this level involve creating supportive organizational cultures, implementing policies that promote health and well-being, and ensuring access to resources and services that meet the needs of individuals within these settings.

Public Health Projects

Personal Protective Equipment (PPE Bags)

Expenditure Category: 1: Public Health

Throughout the COVID-19 pandemic, it was emphasized that basic hygiene practices were one of the most simple and effective ways to prevent the spread of the disease. Providing individuals who were disproportionately impacted with the tools to maintain basic hygiene may help them from contracting or spreading the disease known as COVID-19 and its variants.

- The County of Rockland used SLFRF funding to purchase and distribute Personal Protective Equipment to various individuals and community organizations between March 3, 2021, and December 31, 2021, throughout all of Rockland County.
- Hygiene Packs were also distributed during the Point in Time count in January 2023 when volunteers and not for profit organizations across the County went out to count the homeless/unhoused population throughout the County. 100 Hygiene Packages, complete with soap, toothbrushes, toothpaste, tissues, and hand sanitizer were prepared and distributed county-wide.

Public Health Capacity in our Hospitals

Expenditure Category: 1: Public Health

Good Samaritan Hospital, located in the Town of Ramapo, provides all residents in Rockland and resides in a Low and Moderate-Income Community. Good Samaritan's patient population includes significant numbers of medically vulnerable demographic groups, including elderly adults, residents living below the Federal Poverty Level, people with a disability, foreign-born residents, and households where English is not the dominant language spoken.

During the Pandemic, there was a State declared disaster emergency as well as a shortage of PPE. NYS Governor Executive Order 202.10 issued all Elective surgeries to be cancelled, and existing bed capacity was increased 50% to care for COVID-19 patients. Rockland County had the fastest growing number of cases and the highest per capital rate of infection in NYS, and among the highest in the country. In addition, New York State directives were in place to ensure that hospitals sustain a 15% available capacity to be able to handle a surge. Rockland County was significantly impacted by the COVID-19 pandemic which has recorded over 121,176 confirmed cases of COVID-19, and 988 deaths related to the virus since

the onset in March of 2020. The impact on the healthcare system in Rockland County was significant.

The demand for hospital beds, medical equipment, and personnel surged as the number of COVID-19 cases increased. Hospitals and medical facilities faced shortages of personal protective equipment (PPE), such as masks, gloves, and ventilators. Since the start of the COVID-19 pandemic, Good Samaritan Hospital and the Bon Secours Charity Health System has performed over 131,000 COVID-19 tests with over 21,000 resulting positive with large patient populations centering around Spring Valley, Monsey, Suffern, New City, and Nanuet in Rockland County.

Overall, the COVID-19 pandemic had a significant impact on the healthcare system in Rockland County and healthcare providers worked tirelessly to respond to the challenges posed by the pandemic.

- **Reimbursement for Equipment Not Covered by FEMA:** Good Samaritan Hospital is reputable for providing exquisite patient care and support to the diverse population of Rockland County. The equipment requested was/is needed to treat and monitor patients with COVID-19 patients. Unfortunately, FEMA did not cover the full cost of these vital pieces of equipment, leaving Good Samaritan Hospital an additional expense during a vulnerable time.

\$364,318.39 was utilized to provide reimbursement to Good Samaritan Hospital for the equipment used to treat and monitor COVID-19 patients.

- **Electronic Medical Record Network Implementation:** Throughout the COVID-19 Pandemic, Good Samaritan Hospital has remained dedicated to equitably serving the county with an emphasis on operational readiness to support the needs and treatments of the community in a safe and efficient manner. Since the onset of the pandemic, Good Samaritan Hospital treated over 3,000 COVID positive patients, with 523 readmitted due to COVID-19 reinfection and recorded 821 patients with long-haul COVID-19 conditions. Throughout the pandemic, every floor of the hospital was inundated with patients due to demand for beds or the need for more specialized treatment. To facilitate in increasing provider communication and collaboration, the new EMR network would help prevent patients from delayed treatment, transfer to specialized floors, and faster triage of symptoms and complications. The EMR network will revolutionize the delivery of healthcare to the patients, significantly enhancing provider to provider communication, clinical patient outcomes, operational staff efficiency, and data-driven decision-making across the entire health network. The EMR system will allow access to the patient's chart and the care they are receiving to include laboratory testing, radiology examinations, and medication changes. This system will be linked to sister hospitals in case patients need to be transferred, allowing for a streamlined patient collaboration. Since the implantation of the new system, Good Samaritan Hospital has recorded improvement in the following areas:

- Improved provider and clinical staff coordination
- Enhanced patient care and safety
- Streamlined clinical workflows
- Interoperability and Data Exchange

- Data-Driven insights
 - Increased cost-efficiency
 - Compliance and Security
- **Cardiac Catheterization Lab-** Since the onset of the COVID-19 pandemic GSH has discharged 3,417 patients who were admitted due to COVID-19 infections. Based upon this distinct patient data, GSH estimates that 2,335 of these patients are at greater risk for cardiovascular issues. Long-term COVID-19, also known as post-acute sequelae of SARS-CoV-2 (PASC), can cause various persistent health problems, including significant cardiovascular complications. These complications can range from myocarditis (heart inflammation) to heart failure and arrhythmias. Additionally, the pandemic has disproportionately impacted communities with lower socio-economic levels and has led to greater disparities in levels of health equity for at-risk and vulnerable patient populations. In particular, the communities of Spring Valley, Monsey, and Suffern, had the largest volume of patients with a confirmed diagnosis of COVID-19 with over 4,606 confirmed cases between the onset in March of 2020 and March of 2023. The GSH Catheterization Lab has been designed to support the potential surge in patients in need of cardiac procedures to decrease the adverse impacts that COVID-19 is causing and ultimately improve their overall health and long-term wellbeing.
 - As noted in the Community Health Assessment, cardiovascular disease is the highest leading cause of death in Rockland residents. Not only will the Cardiac Catheterization Lab play a crucial role in supporting and managing long-term COVID-19 patients by expanding access to care to increase early detection rates for cardiac abnormalities and improving patient outcomes with minimally invasive procedures to restore heart function and overall quality of life but support all our residents at higher risk of cardiovascular issues due to higher comorbidity rates.
 - The Cardiac Catheterization Lab will provide advanced treatment planning which will help providers and patients make more informed treatment decisions and care plan updates based on a more accurate cardiac diagnosis.

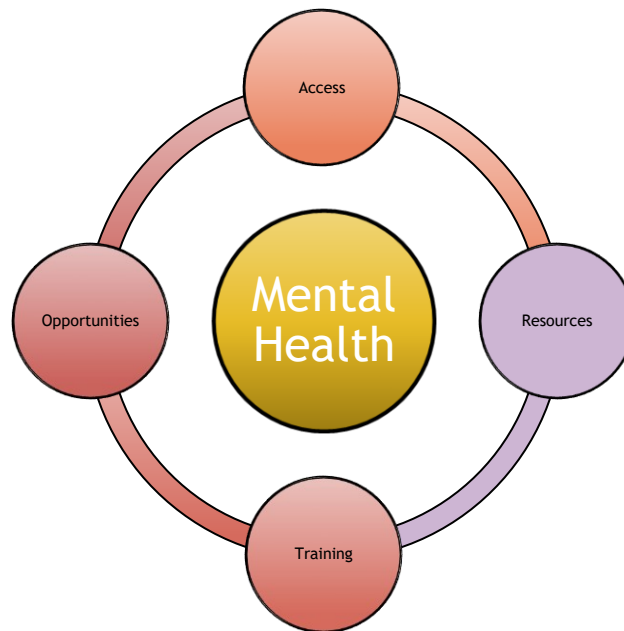
Mental Health

Expenditure Category: 1: Public Health

The pandemic had a significant and widespread impact on mental health. Through ARPA surveys, and as noted in the 2022-2024 CHA, the impacts on Rockland residents remain. Data collected has shown that Rocklanders are still affected with increased anxiety and depression, increase in substance use, loneliness and social isolation, increased suicidality, burnout, and disparities in mental health.

While the national 988 line has increased accessibility to mental health interventions, there is still a gap on who is called out for the acute crisis response. Linking the 988 and 911 systems can create a more integrated and effective response to mental health crises. A more robust 911 platform that focuses on mental health call can facilitate in supporting mental health through shared trainings for dispatchers, coordinate response protocols, integrated technology systems, joint crisis response teams, cross- agency communication, stronger public awareness, resource mapping and better follow up support.

The county believes that improved internal efforts will foster stronger community partnerships and better evaluation and improvement of systems. By linking 911 and 988, communities can create a more cohesive and responsive system for addressing mental health crises, ensuring that individuals receive the right kind of help at the right time.



- **Restructuring Rockland’s Resources- 911 Diversion Program:** A 911 Diversion program is an essential initiative aimed at diverting certain emergency calls away from traditional law enforcement or emergency response services to more appropriate and specialized resources. Several important key factors to consider:
 - **Resource allocation:** Emergency services, such as police and ambulance, are often stretched thin and have limited resources. By implementing a diversion program, less critical calls can be redirected to appropriate agencies for services, ensuring that emergency responders can focus on situations that truly require immediate attention.
 - **Faster response times:** With non-emergency calls being redirected to appropriate agencies, first responders can respond more quickly to genuine emergencies.
 - **Enhanced Community Safety:** The diversion program allows for a more tailored response to different types of incidents. By involving social workers, mental health professionals, or other specialized teams, the program can address underlying issues that may contribute to non-emergency calls, such as mental health crises or substance abuse problems. By addressing these root causes, the program can help prevent future emergency situations and enhance overall community safety.
 - **De-escalation and Conflict Resolution:** Emergency responders, especially law enforcement, may not always have the necessary training to handle certain non-

emergency situations effectively. By diverting such calls to professionals with expertise in conflict resolution and de-escalation techniques, potential confrontations can be minimized, leading to better outcomes for everyone involved.

- **Improved Public perception:** Utilizing a diversion program shows that the community and local authorities are committed to finding effective and compassionate solutions to the diverse needs of their residents. This can lead to improved public trust in law enforcement, fostering a better working environment.

The 911 diversion program is crucial for optimizing emergency response, addressing underlying mental and behavioral health issues, improving community safety, and promoting a more efficient and compassionate approach to handling diverse situations that arise within a community. It reflects a proactive effort to meet the needs of the public while ensuring that emergency services can focus on situations where their expertise is most required. SLFRF funding will be utilized to implement a new digital platform for better mental health first response and training for all staff members.

Climate Mitigation

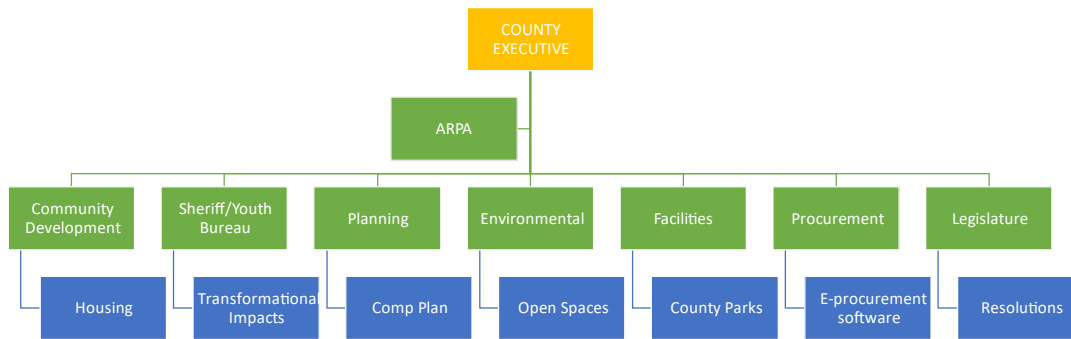
Mitigation activities to lessen or avert the threat of a natural disaster and its potential physical or negative economic impacts, including structure elevation, mitigation reconstruction, dry flood proofing, structural retrofitting, non-structure retrofitting, wind retrofit, and infrastructure retrofit are specifically emphasized in the [*Interim Final Rule*](#). Treasury has explained that mitigation activities may be stand-alone projects that reduce or eliminate the potential impacts of the threat of natural disaster and may also be incorporated into repair or reconstruction projects that address the impacts of a natural disaster.

Stony Point Lowlands Park: The park suffered significant flooding during the July 9, 2023, storm event due to an overflow of the Cedar Pond Brook bank. The stormwater and stream overbank flood conveyed debris/sediment, washed away a portion of the park, damaged equipment, destroyed fencing, washed away mulch in the play area, and displaced families in surrounding homes.

The location of the park leaves the grounds vulnerable to potential additional damage in future storm events. The installation of rock walls/berms along the Cedar Brook stream and hardening of the infrastructure in and around the park would provide the protection needed to avoid future flooding and destruction.

Recovery Plan – COUNTY/POLICY

Departmental Partnerships



The policy level demonstrates systemic change can influence large populations. By addressing issues at a policy level, the ARPA initiatives will have a broad impact, altering the social and physical environments in ways that promote well-being and health.

Through interdepartmental partnerships, silos are broken down and new standardized practices and initiatives become the norm, ensuring effective strategies to reach common goals and objectives for a better county. The ARPA funding has allowed for a multifaceted, intergovernmental approach to reviving and rebuilding Rockland.

The policy level is crucial for broader systemic factors that influence behavior and well-being, ensuring sustainable, equitable, and widespread improvements in public health and social outcomes. This level emphasizes the significant impact that governmental and institutional policies have on shaping the environment in which individuals live and make decisions. This level demonstrates the effective implementation of policies that promote public health, social justice, environmental sustainability, and economic stability.

Administrative/Studies

Expenditure Category: 7: Administrative and Other

Administration is paramount for the continued evaluation of the proposed projects/programs to ensure the objective to maintain an emphasis on equity, community engagement, and compliance exceeds expectations. The ARPA Department will also collaborate with various intra-County departments to initiate additional County-wide need assessments and feasibility studies based on community feedback. The qualitative and quantitative data from these assessments and studies will provide evidence and support to bridge the current and historical gaps throughout the County of Rockland.

Studies and Software

- **County of Rockland Comprehensive Plan:** Rockland County is taking an important step in guiding its future with the decision to undertake an update to its Comprehensive Plan. Since the previous plan was adopted in 2011, there have been significant changes in development trends, demographics, policies, and procedures. The updated Comprehensive Plan seeks to use both traditional and innovative (technology-based) solutions to guide an inclusive process that will amplify community engagement and participation in the Plan update, to ensure community priorities are integral to the Plan's vision, goals, and strategies. This update presents an opportunity to recruit new voices and influencers as well as learn from leaders that share historical and institutional knowledge. The update will set goals and objectives for the next generation of Rockland County residents and should create a vision for the County and guide future development and investments.
- **AmpliFund:** For efficient tracking and reporting by the ARPA Department, a Grant Management System Software (AmpliFund) was procured. Throughout the tenure of the ARPA Department, the Amplifund software has been used to create grant opportunities, submit vouchers, monitor subrecipients, and create reports for SLFRF requirements.
- **Regional eSourcing Software:** This software will benefit the County of Rockland's ARPA Department as well as many additional departments in the mission to Revive and Rebuild Rockland. Expanding the eSourcing Procurement software from solely County-wide to Regional creates a Regional online marketplace for all local governments and non-profits to access contracts awarded by five counties. A central repository for such information will save participants time, enforce accountability, and provide a unified structure for the procurement process. These highlights will contribute to fair, innovative, and cost-efficient procurement solutions.

Promoting Equitable Outcomes

Promoting equitable outcomes with ARPA funds is essential to ensure that vulnerable and marginalized communities in Rockland receive the support they need to recover and thrive. They ensure that funding effectively reaches and benefits the populations most in need, thereby enhancing the overall impact and success of the county's Whole Person Whole Community plan. The ARPA Department developed many tools that helped ensure equity and opportunity were at the helm of our responsiveness to the funding:

1. **Equity Lens in Allocation:** Use of an equity lens while allocating ARPA funds to identify communities and populations disproportionately impacted by the pandemic and historical inequities. Prioritize funding for projects and programs that directly address their specific needs and challenges.
2. **Targeted Outreach and Engagement:** Conduct targeted outreach and engagement efforts to reach underserved communities and gather their input on how ARPA funds should be allocated. Engaging with community leaders and organizations can help identify their priorities and ensure that funds are used effectively.
3. **Addressing Health Disparities:** Allocate funds to improve access to healthcare services and address health disparities among disadvantaged communities. Invest in public health initiatives and outreach programs targeting often hard to reach communities.
4. **Environmental Equity:** Enhancing green spaces and building affordable housing in marginalized communities.
5. **Language Access:** Ensure that information about ARPA-funded programs and services is available in multiple languages to reach non-English speaking communities and enhance accessibility.
6. **Data Collection and Evaluation:** Collect disaggregated data to track the impact of ARPA-funded initiatives on different demographic groups. Regularly evaluate the outcomes to identify disparities to promote equitable distribution of resources.
7. **Collaboration with Community Partners:** Collaborate with community-based organizations and advocacy groups that have expertise in addressed equity issues. Their insights can help shape effective strategies to promote equitable outcomes.
8. **Cultural Competence:** improve sensitivity to the unique needs of diverse communities and foster better service delivery.

By prioritizing equity and inclusivity throughout the allocation and implementation of ARPA funds, Rockland can work towards reducing disparities and building a more just and resilient community for all its residents. These tools give the ARPA Department the opportunity to enhance public health, reduce long term affects, build stronger social cohesion and create a sustainable recovery.

Community Engagement

As discussed in promoting equitable outcomes, The ARPA Department continues to remain mindful to the community's emerging needs while also fostering the County's collaborative efforts with CBO's and faith-based organizations. All fliers, Public Service Announcements (PSA's), surveys, and outreach efforts continue to be translated to the multiple languages that reflect the diversity within the County.

Recognizing the geographic, cultural, structural, and language limitations of its various community members, the ARPA Department uses a variety of strategies to gather input, build trust, and ensure transparency. The outreach efforts include:

- Surveys and Questionnaires
- Focus Groups
- Partnerships with Community Organizations
- Advisory Committees
- Public Workshops
- Digital Engagement
- Listening Sessions
- Data Transparency

*All outreach efforts are translated into the appropriate languages, or a translator is present at the events.

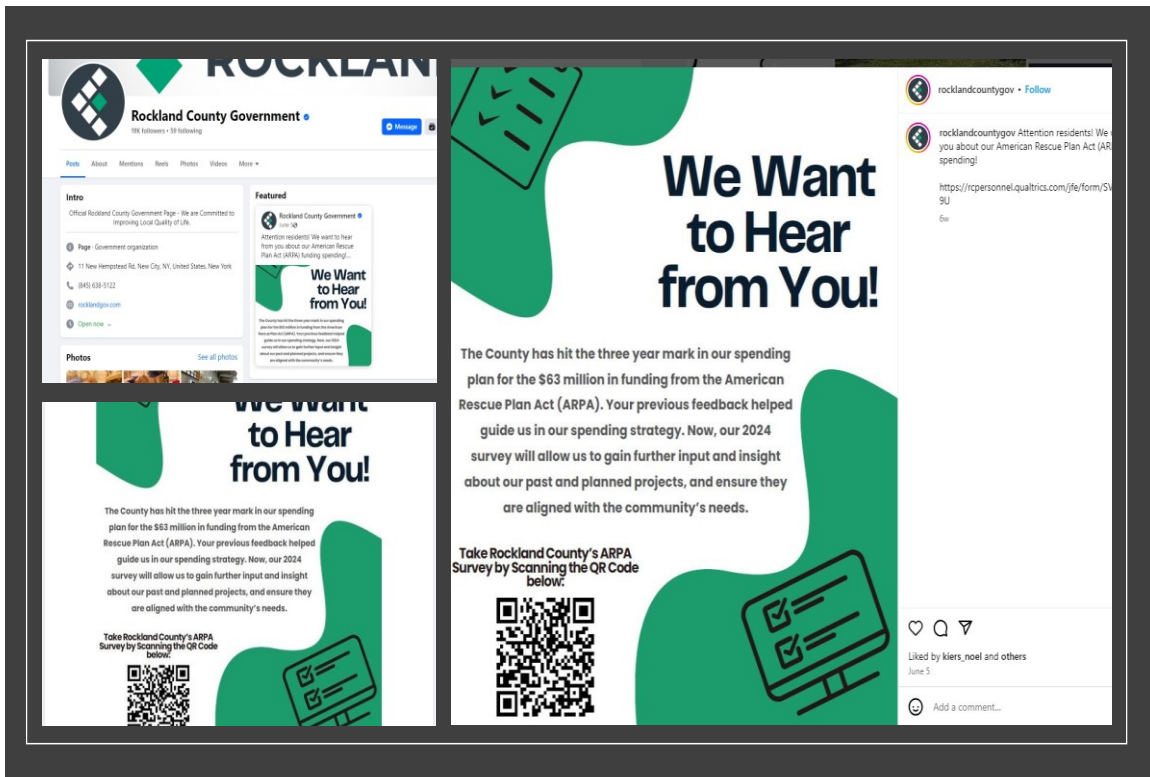
With full transparency throughout the entire process, the County is approaching all funding allocation categories with a logic model and Specific, Measurable, Attainable, Relevant, Time-based (SMART) goals to assess equitable outreach and services to communities and continues to be open and upfront with the public and other intergovernmental departments. Furthermore, a lean strategy to any evidence-based interventions using a Plan, Do, Study, Act (PDSA), SWOT, and CATWOE framework to ensure the County is measuring outcomes and identifying possible unintended consequences throughout the process to avoid a loss of opportunity, inequitable practices, and allow for scalable improvements. In doing so, the County achieves the following:

- The County of Rockland's ARPA Department ensures that all flyers/advertising is translated into the various languages that represent the very diverse communities that reside in the County
- A user-friendly grant portal, that can be translated in multiple languages, to assist in a more streamlined application process and more effective monitoring and compliance
- Free Uniform Guidance training from our Procurement department to ensure compliance with all Federal Regulations
- Continuous IT training and technical support held via in person, virtual meetings, or telephone
- More interdepartmental Collaboration- ensuring current trends are evaluated, data is relevant, and needs are met across the board
- Multiple iterations of a full ARPA Comprehensive Plan, determine the acute needs of the community/County

- Multiple in person site visits/ meetings with other local government entities, local businesses and organizations, and various individuals and families that represent the whole of the County

With the use of multiple types of outreach opportunities, our goal for continued community voice and buy-in is ever present. Through the efforts of multiple meetings with other government and community agencies, attending collaboratives, walking through communities, and hosting in person community focus groups, we have seen an increase in interest in our existing grants and future expenditure plans. We will continue this outreach and expand our efforts to more groups and individuals as we continue to scale up our efforts through our proposed expenditures.

As the ARPA expenditures continue to scale up to larger projects, community engagement will continue to be paramount. On the ground outreach, digital presence, community events, and surveying will continue to be the opportunities used to reach as many residents as possible.





ROCKLAND RIVERWAY TRAIL

ESTUDIO DE FACTIBILIDAD

¡Acompañanos!

TALLER PÚBLICO

Acompañanos a un taller de público para obtener más información sobre el borrador de la alineación del Rockland Riverway Trail. Se instalarán estaciones de información, brindando la oportunidad de dar su opinión sobre lo que le gustaría ver.

¿CUANDO?

2 de noviembre del 2023
Visita entre las 6:30 p.m.
y las 9:00 p.m.

¿DÓNDE?

West Haverstraw Community Center
130 Samsondale Avenue
West Haverstraw, NY 10993

¡Aprende
más!

Visite el sitio web del proyecto para obtener más información:
www.rockland-county-sup.com



¡Envíe sus
comentarios!

Ver el borrador de la alineación de la ruta y añadir comentarios específicos de la localización en el mapa interactivo:
tinyurl.com/Rockland-riverway-trail



נאַנפּראָפּאָט פּוּד סעקורטי עקוויפּמענט שענקען ריווייווינג און ריבילדינג ראָקלאַנד

יחיד ריימבערסמאַנט גראַנץ
פּוּן אַרױף צו \$ 20,000 וועט
זיין אוואָרדיד צו אפּליקאַנץ
וואָס טרעפּן די באַרעכטיגונג
באדערפענישן



באַרעכטיגט הוצאות אַרױנגעמען אַבער זענען נישט לימיטעד צו:

- פּרױערן
- ריפּרױזשערייטערן
- שעלױנג
- ינסאַלייטיד סטאַרידזש שעדן
- ליפּטגאַטעס
- פּאַרקליפּץ
- פּאַלאַט דזשאַקס
- האַנט קאַרץ
- געצעלטן
- אַנדערע

ARPA דעפּאַרטמענט
50 Sanatorium Rd. Building A.
Pomona NY 10970
ARPA@co.rockland.ny.us
845-366-3027

Project Inventory – Overview

Each grant and program opportunity developed by the County of Rockland's ARPA Department has defined metrics and objectives. Through regularly scheduled collaborative meetings, quarterly reporting, annual reporting, and continuous tracking of the open grants in our Grant Management Portal, the success of these opportunities is closely monitored.

The **Food Security, Reviving Rockland Restaurant, Small Business Rescue Reimbursement**, and **Nonprofit Recovery** grant programs were all monitored in real-time. The metrics and objectives were outlined within the individual grant applications. Each application was carefully reviewed to determine if the beneficiary was eligible for award. If the application was eligible, a detailed list of reimbursement items was created and attached to a contract that was signed by the beneficiary and County Representatives. The contract served to emphasize the award is a one-time reimbursement and any regulatory requirements.

The **Food Security Grant Program** was opened for a year with an unfortunately, minimal response. It was determined that there was an unintended consequence in having such a specific focus in this grant opportunity. Many of the Food Pantries had received or were receiving funding for the eligible items outlined in the grant. This posed a high-risk in the potential of duplication of funds. This risk led the ARPA Department to sequester feedback from the Food Pantries and other Nonprofit organizations. Their responses were received through a 2022 Nonprofit Survey as well as in-person/virtual meetings. It was determined that the lens of the program must be expanded to include expenses that no longer or never had funding opportunities. With the responses and the needs of the Nonprofit organizations at hand, the **Food Security Grant Program** was closed, and the **Nonprofit Recovery Grant Program** was opened. As summarized below in the **Project Inventory** section, the **Nonprofit Recovery Grant Program** was more successful than the **Food Security Grant Program** and 14 Nonprofit organizations received assistance.

In addition to the previously mentioned grant programs, the ARPA Department also offered the **Urban Green Space Grant Program** (formerly known as the **Rockland Resilient Recreation Grant Program**). This program was so successful that the \$5 million in funds that was allocated for this opportunity were increased to \$6.3 million to meet the demand of the funds requested. The response to this program demonstrated the dire need to create, repair, or enhance Urban Green Spaces throughout the County. Similar to the other grant programs, the metrics and objectives are outlined within the individual grant applications. However, the metrics and objectives are outlined by the applicant and approved (after discussion if necessary) by the ARPA Department.

The applicants are required to submit a Logic Model (see picture below) to layout the **Inputs, Activities, Outputs, and Outcomes** (short-term, intermediate, and long-term) of the proposed project. These Logic Models are included in the Subrecipient contract that is signed but the applicant and County Representatives. The contract highlights the scope of the project, the approved activities, and the applicable **Uniform Guidance** requirements.

The following template reflects a logic model intended to outline the implementation plan associated with each project. Consider the following definitions when completing the logic model:

Inputs: All of the material and resources needed in order to carry out the project (ex. stakeholders, land, physical materials, etc.)

Activities: Each action item that must be completed from start to finish in order to successfully carry out the implementation plan (ex. meet with town supervisor, purchase equipment, etc.)

Outputs: Measurable successes after each activity has taken place (ex. Number of surveys completed, community buy-in, etc.)

Outcomes/Sustainability: Goals and impact of the project on a short term (within 12 months), intermediate term (within three years), and long term (within 3-10 years)

INPUTS	ACTIVITIES	OUTPUTS	OUTCOMES
			<u>Short Term</u>
			<u>Intermediate Term</u>
			<u>Long Term Impact</u>

To ensure compliance with Federal Requirements, the ARPA Department requires all Subrecipients to attend (free) **Uniform Guidance** training, provides Pre and Post Contract letters, and Project Checklists. The Logic Models and Checklists assist greatly in maintaining a streamlined monitoring process in accordance with 2 CFR 200.331 – 2 CFR 200.333. The ARPA Department also understands that the Federal Requirements differ from the State and County requirements that our Subrecipients are familiar with. In the interest of providing inclusivity and transparency, the ARPA Department welcomes an open line of communication to ensure all projects are compliant and on track.

As part of the monitoring process, the ARPA Department will review all quotes, solicitation documents, and decisions made by the Subrecipients to confirm compliance requirements have been met. Both scheduled and non-scheduled site-visits also occur to determine that the project objectives and metrics are met.

For programs funded with SLFRF funds such as the Youth Employment (YEP), Youth Police Initiative (YPI), Youth Enrichment Program lead by the Haverstraw African American Connection, and Gun Buy Back programs, the ARPA Department Collaborates with intra-County departments and key Community stakeholders. During the development and planning meetings, Learning Agendas and SMART Goals are created for each program. The Learning Agendas act as a living document throughout the project’s lifecycle and are updated as results and new information are obtained. SMART Goals (template pictured below) help to define the more specific objectives and measurable outcomes. The ARPA Department uses the SMART Goals to enter a Memorandum of Understanding (MOU) with the program administrator. In the MOU the frequency of check-in meetings, reporting, and site visits are established. Reporting templates are also customized to each program to ensure consistent and effective tracking of the measurable outcomes.

As previously mentioned, in January of 2024, it was announced that the State’s Summer Youth Employment Program (SYEP) funding would be extended by New York State as they recognized the importance of year-round employment for those who met the TANF qualifications. The SYEP extension began January 1, 2024, and is set to end June 30, 2024 (the summer funding for these participants will be available from June 30 – January 1). The ARPA Department completed an evaluation (as detailed in the Project Inventory section) and determined to discontinue the funding to expand of the County’s YEP due to the availability and use of State funding.

SMART GOALS: *Title*				
Specific	Measurable	Achievable	Relevant	Time-Bound
What do we want to accomplish? Who will be involved/affected? Where will it take place? When? Why?	<u>Deliverables</u>	To measure the deliverables outlined in the Measurable Column, the following must occur: <u>Potential Obstacles:</u>		

The ARPA Department contracted with Buckhurst, Fish, & Jacquemart Inc. (BFJ) to conduct a feasibility study for the proposed **Rockland Riverway Trail** (formerly known the Rockland Resilient Path). BFJ was procured through a formal bid process to determine if it is feasible to build a shared use path from the Southernmost point to the Northern most point of Rockland County. The study was led by a team of planners, engineers, landscape architects and economists from the consultant team and Rockland County. The trail is planned through the following towns and villages:

- Town of Orangetown, including the Villages of Piermont and Grand View-on-Hudson
- Town of Clarkstown, including the Villages of Nyack and Upper Nyack
- Town of Haverstraw, including the Villages of Haverstraw and West Haverstraw
- Town of Stony Point

Through meeting with the Municipalities, Public Engagement, studies of economic impacts and health benefits, BFJ determined *“that the Rockland Riverway Trail is feasible. There is strong local support for this investment in the community’s recreational and health opportunities. A well-designed trail, with its extensive connections to paths and trails in the County and the surrounding region, will add significant value to Rockland County as a place to live and work. The costs of the trail will be more than offset by the long-term economic and health benefits. The fact that significant portions of the trail already exist in an initial condition facilitates the implementation of a high-quality trail”*.

In 2024, the County of Rockland’s Community and Affordable Housing Needs Assessment, was completed by Patterns for Progress. The recommendations presented in the **Community and Affordable Housing Needs Assessment** outlined numerous initiatives that would propel the County to a new level of reasonable and proportional solutions for the existing affordable housing crisis. Currently, the ARPA Department and Office of Community Development are working in tandem on several Affordable Housing Initiatives that will promote sustainability and more equitable housing opportunities throughout the County.

The subsequent **Project Inventory** sections provide more details on the statuses, expenses, highlights, and performances of the projects noted above and more.

Project Inventory – Completed Projects

Project PH: 001 Personal Protective Equipment

Funding Amount: \$20,378.89

Project Expenditure Category: 1-Public Health – 1.5 Personal Protective Equipment

Project Overview

The County of Rockland used SLFRF funding to purchase and distribute Personal Protective Equipment to various individuals and community organizations between March 3, 2021, and December 31, 2021, throughout all of Rockland County.

Goal

- To provide PPE to communities that were directly impacted by the COVID-19 virus in Rockland varied from seniors, low to moderate income households, multi-generational households, the homeless, and the sick and homebound.

Use of Evidence

- Through our partnerships with our local not for profits, faith-based organizations, food pantries, community centers, and other county departments, we were successful in reaching a higher percentage of community members.
- We set up giveaway events, partnering with our local Department of Health during their vaccination pods, had drive-thru events with our OFA, dropped off PPE packages to senior housing complexes, held events at our local community centers, and delivered PPE to soup kitchens for the homeless population.
- Serves Disproportionately Impacted Low-income Households and populations, impacted low- or moderate-income Households and populations, Disproportionally Impacted Nonprofits operating in Qualified Censes Tracts

Performance Report

- As we distributed our PPE, throughout all of 2021, specifically in the QCT, we saw more community engagement/support, as well as reduction in COVID cases. Our proactive approach provided much needed solace to individuals and families who could not afford PPE.

Project 1.5: HP - Hygiene Packs

Funding Amount: \$248.90

Project Expenditure Category: 1-Public Health – 1.5 Personal Protective Equipment

Project Overview

The Point-In-Time is an annual, nation-wide survey that occurs on a single evening in January. The survey is community lead to count the number of sheltered, and unsheltered persons who are experiencing homelessness. The ARPA Department was contacted by the Haverstraw Community Center (the Center) who is a stakeholder in the County of Rockland's Point-In-Time survey. The Center opens their gymnasium to those who are experiencing homelessness to offer food, clothing, medical, and social services at no cost to the individual and their children. Adjacent to the Center, there are trailers that provide the opportunity for grooming and bathing. Hygiene Packages, complete with soap, toothbrushes, toothpaste, tissues, and hand sanitizer were prepared and distributed to those in need at the county-wide event.

Goal

- To support the Center with the increased demand in assisting this disproportionately impacted community with their hygiene needs.

Use of Evidence

- Throughout the COVID-19 pandemic, it was emphasized that basic hygiene practices were one of the most simple and effective ways to prevent the spread of the disease. Providing these individuals with the tools to maintain basic hygiene may help them from contracting or spreading the disease known as COVID-19 and its variants.
- Through our partnerships with our local not for profits, faith-based organizations, food pantries, community centers, and other county departments, we were successful in reaching a higher percentage of community members.
- Serves Disproportionately Impacted Low-income Households and populations, impacted low- or moderate-income Households and populations, Disproportionally Impacted Nonprofits operating in Qualified Censes Tracts

Performance Report

- 100 Hygiene Packages, complete with soap, toothbrushes, toothpaste, tissues, and hand sanitizer were prepared and distributed to those in need at the county-wide event.

Project 1.7: GSH Reimbursement - GSH Equipment Expenses Not Covered by FEMA

Funding Amount: \$364,318.39

Project Expenditure Category: 1-Public Health – 1.7-Other COVID-19 Public Health Expenses (including Communications, Enforcement, Isolation/Quarantine)

Project Overview

Good Samaritan Hospital which is part of the Bon Secours Charity Health System (BSCHS) and the Westchester Medical Center network, is located in Suffern, NY within Rockland County and supports a total population of 338,329 as of 2020 census data with additional patients traveling to GSH for higher acuity levels of care from neighboring Orange County, NY as well as from Bergen County, NJ. This project supports the treatment of patients with COVID-19 by increasing the medical staff's abilities to continuously monitor patient's vitals and other key aspects of their care while admitted to GSH's critical care unit (CCU), special care unit (SCU), cardiovascular intensive care unit (CVICU), and 4 North unit. In addition, this project supports protecting patients and staff from the community spread of COVID-19 by significantly decreasing the amount of time necessary for medical staff to be physically in the patient's room to review vital values and monitor their patients. All equipment components installed at GSH and submitted for this project are an entirely new submission and not part of any other project submitted by the BSCHS.

During the Pandemic, there was a State declared disaster emergency as well as a shortage of PPE. NYS Governor Executive Order 202.10 issued all Elective surgeries to be cancelled, and existing bed capacity was increased 50% to care for COVID-19 patients. Rockland County had the fastest growing number of cases and the highest per capital rate of infection in NYS, and among the highest in the country. In addition, New York State directives were in place to ensure that hospitals sustain a 15% available capacity to be able to handle a surge.

The Bon Secours Charity Health System leadership team determined that expanding the telemetry capacity at Good Samaritan Hospital (GSH) one of BSCHS's hospitals, was of vital need to support both needs of higher acuity patients and to protect the workforce to ensure that the organization is doing all it can to mitigate the community transmission of the disease and limit the potential for severe adverse outcomes. Furnishing those beds with patient monitoring equipment was necessary to support the needs of higher acuity patients that COVID -19 infections brought to the hospital, where continuous monitoring allowed for the early identification of patient status changes and therefore the mitigation of worsening disease. Continuous monitoring of vital signs such as: heart rate and rhythm, respiratory rate and oxygenation rate (pulse oximetry) were vital in our ability to support patients to better outcomes. COVID-19 is an infectious disease caused by the SARS-CoV-2 virus.

Patients that require hospitalization for the treatment of the virus are most vulnerable to the respiratory and cardiac effects of COVID -19. Because of the rapid decline that can be experienced, and which often leads to death, it was necessary to provide patient monitoring (telemetry) to increase the hospitals capacity for rapid diagnosis of decline.

- Link: <https://www.goodsamhosp.org/covid19-comprehensive-care>

Goal

- Throughout the COVID-19 Pandemic, Good Samaritan Hospital remained dedicated to equitably serving Rockland County with an emphasis on providing exquisite patient care and support. The equipment requested was/is needed to treat and monitor patients with COVID-19 patients. Unfortunately, FEMA did not cover the full cost of these vital pieces of equipment, leaving Good Samaritan Hospital an additional expense during a vulnerable time.
- With the expansion of telemetry monitoring in the 4North unit staff was able to increase the number of patients being actively monitored this allowed the continuous display of important vital signs of heart rate and pulse oximeter as well as continuous cardiac waveforms monitoring that allowed for early detection of abnormal rhythms. This allowed for timely recognition of worsening patient status and reduced time spent in patient rooms, and additionally protected their staff.

Use of Evidence

- The U.S. Food and Drug Administration (FDA) supports the use of patient monitoring equipment in the treatment of patients with COVID-19. A published letter from Chief Scientist Denise M. Hinton to Ms. Sunny Yi, she states that the use of IntelliVue Patient Monitors is effective for remotely monitoring the physiological parameters of patients in hospitals and reduces the risks of exposure for community transmission of COVID-19 amongst health care workers. Further, the U.S. Department of Health and Human Services (HHS), the Food and Drug Administration (FDA), the Center for Devices and Radiological Health (CDRH), and the Office of Product Evaluation and Quality (OPEQ), state in their guidance for industry and FDA staff in June 2020, that:

“The leveraging of current non-invasive patient monitoring technology will help eliminate unnecessary patient contact and ease the burden on hospitals, other health care facilities, and health care professionals that are experiencing increased demand due to the COVID-19 pandemic as it relates to diagnosis and treatment of patients with COVID-19”

- Additionally, in the journal article “Validating and implementing cardiac telemetry for continuous QTc monitoring: A novel approach to increase healthcare personnel safety during the COVID-19 pandemic” written by Nicholas Kasis M.D. in the Journal of Electrocardiology; the author’s findings support implementing patient monitoring systems as an effective means of treating patients with COVID-19 as well as protecting staff from the community transmission of COVID-19. The author’s findings state that:

“Using a novel “no-touch” telemetry-based approach to QTc monitoring, our primary findings are twofold: 1) telemetry-based QTc measurements are highly accurate relative to gold-standard 12-lead ECG, and precise among three trained independent operators competent in measuring cardiac intervals; 2) initially validated in a general hospitalized population, this method can be successfully implemented in the clinical setting as demonstrated by its utilization in COVID-19 patients who experienced a significant increase in QTc after treatment with hydroxychloroquine or azithromycin. Our results lend credence to telemetry as a valid clinical tool for QTc monitoring in place of

standard 12-lead ECG, thereby minimizing direct patient contact and mitigating infectious risk among healthcare personnel and patients alike.”

- Serves Disproportionately Impacted Low-income Households and Populations, Impacted Nonprofits that experienced a negative impact, and Disproportionally Impacted Nonprofits operating in Qualified Census Tracts

Performance Report

- To date BSCHS has discharged 3,424 COVID-19 patients home and back to their families because of the close monitoring they received.
- The remote monitoring allowed for the attainment of key vital sign measures without requiring additional time at the COVID-19 patient's bedside therefore allowing our nursing staff to safely care for a group of patients and limited their exposure of infectious patients and thus protecting the staff.
- The 4North unit, a 7-bed medical surgical unit, was identified as the second of two inpatient units at GSH to install telemetry equipment to provide the level of monitoring needed to appropriately monitor and care for the increase in acuity of COVID -19 patients treated.
- This unit was not previously equipped with this patient monitoring equipment and the critical need arose for this level of monitoring as the COVID pandemic continued. The telemetry capability was installed on the unit, which allows for the remote monitoring of all 7 patient beds, with a centralized bank of monitors located at an isolated nursing station within the Unit.

Project 1.7: GHS EMRN - GSH - Electronic Medical Record Network Implementation

Funding Amount: \$2,000,000.00

Project Expenditure Category: 1-Public Health – 1.7-Other COVID-19 Public Health Expenses (including Communications, Enforcement, Isolation/Quarantine)

Project Overview

Good Samaritan Hospital (GSH) in Suffern, NY requested assistance to support the implementation of a network wide electronic medical record (EMR) system that will improve provider communication, care coordination, access to care, care team engagement, and transitions of care for follow-up appointments.

Rockland County, NY, was significantly impacted by the COVID-19 pandemic which has recorded over 121,176 confirmed cases of COVID-19 and 988 deaths related to the virus since the onset in March of 2020. The impact on the healthcare system in Rockland County was significant. The demand for hospital beds, medical equipment, and personnel surged as the number of COVID-19 cases increased. Hospitals and medical facilities faced shortages of personal protective equipment (PPE), such as masks and gloves, and ventilators amongst other vital and lifesaving medical supplies.

Healthcare providers in Rockland County, NY, have been working tirelessly to respond to the challenges posed by the pandemic. Since the start of the COVID-19 pandemic, GSH and the BSCHS has performed over 131,000 COVID-19 tests with over 21 thousand resulting positive with large patient populations centering around Spring Valley, Monsey, Suffern, New City, and Nanuet in Rockland County.

Since the onset of the COVID-19 pandemic in March of 2020, Good Samaritan Hospital (GSH) has discharged a total of 3,424 patients admitted due to COVID-19. Out of that patient population 523 patients were readmitted due to COVID-19 or their subsequent COVID-19 symptoms. Based upon hospital diagnosis codes and ambulatory encounter data, the health system is continuing to support 821 patients with confirmed long-haul COVID-19 conditions. By increasing provider to provider communication and collaboration, the network EMR implantation will help prevent long haul symptoms from negatively impacting Rockland County's communities and patient populations.

To ensure efficient and timely healthcare, GSH implemented a network wide electronic medical record (EMR) system that will improve provider communication, care coordination, access to care, care team engagement, and transitions of care for follow-up appointments. The new Cerner based EMR system will improve patient outcomes for those that are admitted due to COVID-19 by allowing providers to communicate and collaborate in real time within the facility as well as across the Bon Secours Charity Health System (BSCHS) and the Westchester Medical Center (WMC) Health network to support patients that are being transferred for higher acuity and specialty of care. The new EMR system will allow providers to connect with hospitalist staff and attending physicians to support patients with greater efficiency to improve collaboration and reduce redundant screenings and avoidable testing.

By adopting this state-of-the-art technology, GSH is working to revolutionize the delivery of healthcare for their patient populations and significantly enhance provider to provider communication, clinical patient outcomes, operational staff efficiency, and data-driven decision-

making across their health network. The EMR system will allow access for all care team members regardless of physical location, to provide immediate and real time access to the patient's chart and the care they are receiving to include, laboratory testing, radiology examinations, and medication changes. This includes patients being transferred from lower acuity facilities to higher acuity facilities with more advanced care and specialized care teams where communication and collaboration is key for patients with advanced illnesses and conditions. Since 2021, 1693 patients have been transferred from the three BSCHS acute care facilities consisting of Good Samaritan Hospital (GSH) in Suffern, NY, Bon Secours Community Hospital (BSCH) in Port Jervis, NY, and St. Anthony's Community Hospital (SACH) in Warwick, NY, to Westchester Medical Center (WMC) for advanced care and treatment, with over 700 transfers coming from GSH alone.

The EMR system would additionally improve provider communication and collaboration for patients attributed to the Bon Secours Medical Group for primary and specialty care who seek treatment in emergency departments, outpatient surgery centers, and inpatient rehabilitation units throughout the facilities of the WMC Health network. Since the start of 2021, there has been 1,213 distinct admissions to WMC for BSMG patients with another 137 encounters for BSMG patients held for observation status. Additionally, during the same period, there were 833 distinct emergency department encounters at WMC and Mid-Hudson Regional Hospital for BSMG patients with another 874 distinct encounters for outpatient surgeries. As patients need higher acuity or more specialized care to treat and manage their conditions, the ability for providers to communicate and collaborate on their care and treatment plans can be optimized with a comprehensive networked EMR system.

The former fragmented electronic health record system posed numerous challenges for GSH staff members and the patient populations to include delayed access to critical medical information, compromised patient safety, inefficiencies in clinical workflows, and inhibited data exchange between healthcare providers. Consequently, this hinders the ability to provide seamless, coordinated, and patient-centered care in a timely manner.

- Link: <https://www.goodsamhosp.org/covid19-comprehensive-care>

Goal

- GSH is dedicated to creating a healthier community and patient population by utilizing comprehensive technology-based systems to drive clinical opportunities and enhancing patient support systems. Through the implementation of the EMR system, GSH will be able to improve outcomes for patients being treated for COVID-19 and improve the overall health and wellness of Rockland County and our surrounding communities.
- The Cerner EMR system is vital for the long-term support of patients with acute and chronic conditions to better manage their symptoms and increase care coordination throughout the health system by allowing them access to the right services for support regardless of location or provider affiliation.

Use of Evidence

- The transition to the new Cerner EMR system creates an interconnected network to bridge the BSCHS with the WMC Health network that no other EMR system would be capable of providing. With 10 acute care facilities, 3 post-acute care facilities, and two

large medical groups located in the immediate lower Hudson valley service area, provider communication and collaboration are vital to supporting patient populations regardless of where they are receiving treatment. The network includes acute and post-acute care facilities in 6 counties, consisting of Westchester, Orange, Rockland, Ulster, Dutchess, and Delaware Counties, as well as supporting patients from neighboring communities and states to include Pennsylvania, New Jersey, and into Connecticut.

- Additionally, the health network supports patients across this entire region as well as into New York City through ambulatory services provided by the Bon Secours Medical Group and Advanced Physician Services. This network of acute, post-acute, and ambulatory services is highly dependent on leveraging modern information technology structures to deliver high quality patient care. By integrating the Cerner EMR system, providers across the network, regardless of their physical location, can communicate and collaborate with one another to improve care coordination and enhance patient outcomes. This system promotes interoperability and establishes a single source for medical record information that would not be possible with facility specific EMR systems that limit data sharing, visibility, and provider communication.
- Serves Disproportionately Impacted Low-income Households and Populations, Impacted Nonprofits that experienced a negative impact, and Disproportionally Impacted Nonprofits operating in Qualified Census Tracts

Performance Report

- Since the onset of the COVID-19 pandemic in March of 2020, GSH has discharged a total of 3,424 patients admitted due to COVID-19.
- Out of that patient population 523 patients were readmitted due to COVID-19 or their subsequent COVID-19 symptoms.
- Based upon hospital diagnosis codes and ambulatory encounter data, the health system is continuing to support 821 patients with confirmed long-haul COVID-19 conditions.
- By increasing provider to provider communication and collaboration, the network EMR implantation will help prevent long haul symptoms from negatively impacting Rockland County's communities and patient populations.
- The project kicked off in October 2021 during height of the COVID-19 pandemic with the overall intent to improve communication throughout their Network and provide seamless care to the communities they serve.
- The implementation of the Cerner EMR system presents an innovative and transformative solution to address the healthcare network's challenges effectively. Cerner's comprehensive and interoperable EMR platform is designed to streamline workflows, improve communication among healthcare professionals, and provide real-time access to accurate patient data. The key benefits for admitted patients include:
 - 1) **Provider and Clinical Staff Coordination:** The new Cerner EMR system will allow care team members to review pertinent clinical information to include radiology imaging and pulmonary testing in a more expedient and collaborative manner to minimize delays in providing care to patients awaiting test results. One EMR in the Network will support ease of communication of critical information as our patients flow throughout our network for care.
 - 2) **Enhanced Patient Care and Safety:** The Cerner EMR system empowers clinicians with up-to-date patient information, including medical history, test

results, and treatment plans. This accessibility ensures informed decision-making, reduces medical errors, and ultimately enhances patient safety and care quality.

- 3) **Streamlined Clinical Workflows:** Cerner's user-friendly interface and workflow optimization tools simplify and standardize clinical processes. By eliminating redundant tasks and automating routine operations, healthcare providers can focus more on patient care, leading to increased productivity and reduced administrative burden.
- 4) **Interoperability and Data Exchange:** The Cerner EMR system seamlessly integrates with various healthcare systems and enables efficient data exchange between providers, laboratories, and pharmacies. This fosters a collaborative healthcare environment, promoting better care communication, patient coordination, and smoother transitions of care.
- 5) **Data-Driven Insights:** With robust analytics and reporting capabilities, the Cerner EMR system empowers healthcare administrators to derive valuable insights from vast datasets. Data-driven decision-making enhances resource allocation, identifies areas for improvement, and facilitates evidence-based practices, ultimately improving the health network's overall performance.
- 6) **Increased Cost-Efficiency:** The implementation of the Cerner EMR system will lead to long-term cost savings by reducing duplicative screenings, streamlining processes, minimizing redundant tests, and avoiding medical errors. These cost efficiencies enable the health network to allocate resources more effectively, expanding its capacity to serve a broader population.
- 7) **Compliance and Security:** Cerner is compliant with various healthcare standards and regulations, including HIPAA and HITECH. This ensures the security and confidentiality of patient data, safeguarding against potential breaches and ensuring strict adherence to privacy laws.

Project 2.29: SB - Small Business Rescue Reimbursement Grant Program

Funding Amount: \$1,350,385.89

Project Expenditure Category: 2 – Negative Economic Impact – 2.29 Loans or Grants to Mitigate Financial Hardship (Small Business Rescue Reimbursement Grant Program)

Project Overview

Small businesses are the backbone of the U.S. economy, 99% of all businesses in the U.S. are small businesses. A 2019 report found there were 2.2 million small businesses in New York State, employing 4.1 million employees – 50.2% of the New York State workforce.

Small businesses help stimulate the local economy and play a crucial role in supporting the U.S. economic recovery. The COVID-19 pandemic has severely impacted many small businesses nationwide. Small businesses have experienced and continue to experience an undesirable outlook as the result of the COVID-19 pandemic. Since March 2020, many small businesses have suffered from periods of closure and revenue loss. A March 2021 report by the New York State Comptroller found that 4 out of 5 small businesses in New York continue to report negative economic impacts caused by the pandemic. Additionally, an October 2021 report from the Comptroller found that only 1 in 5 small businesses have reported a return to “normal operations.”

The County of Rockland has established the \$2 million Small Businesses Rescue Reimbursement Grant Program, with ARPA funds, to accelerate economic recovery by providing Rockland County small businesses with reimbursement funds for eligible expenses incurred during, and related to, the COVID-19 pandemic. Individual reimbursement grants, ranging from \$5,000.00 - \$50,000.00 will be awarded to select applicants who meet the eligibility requirements.

- Link: <https://rocklandgov.com/departments/county-executive/reviving-and-rebuilding-rockland/grants/#sbrr> - This grant is now closed and will no longer accept new applications.

Goal

- The Rockland Small Businesses Rescue Reimbursement Grant Program aims to provide funding for Rockland County small businesses and micro-enterprises, who can demonstrate revenue declines or unexpected operating cost deficits after March 3, 2021, up to the contracted date, to offset increased expenses or revenue loss caused by the COVID-19 pandemic.

Use of Evidence

- As of Q3 2021, Rockland County Small Business employment numbers have still not yet reached pre-pandemic levels. With the rising costs for real estate and operational materials, it is our hope that the grants to Small Businesses will mitigate financial hardship, restore normal operations, and safely return Rockland based, low/mod income employees back to the workforce, ensuring financial stability in their home.
- Serves Impacted Small Businesses that experienced a negative impact, and Disproportionally Impacted Small Businesses operating in Qualified Census Tracts

- Total project spending that is allocated towards evidence-based interventions: \$1,350,385.89.
- Please see **Use of Evidence** Section for additional evidence-based data.

Performance Report

- This grant assisted 39 Small Businesses.
- The aggregate of the grant awards is \$1,350,385.89.
- This grand opportunity is closed, and all beneficiaries have been awarded.

Project 2.34: FS - Food Security Grant Program

Funding Amount: \$81,240.80

Project Expenditure Category: 2 – Negative Economic Impact – 2.34 Assistance to Impacted Nonprofit Organizations (Impacted or Disproportionately Impacted)

Project Overview

According to a new nationally representative survey of more than 2,000 U.S. adults by Consumer Reports, about 1 in 5 American grocery shoppers (19 percent) have used a food pantry, food bank, or community food distribution at some point since the pandemic began. What is more, about half of them said they didn't use these food programs in the year leading up to the COVID-19 outbreak in the U.S. Therefore, with the prevalence of the COVID-19 outbreak, many community organizations have been using their own funds in meeting the food demands in marginalized communities.

The County of Rockland has established the Food Security Grant Program to reimburse Rockland Based organizations that distributed food to communities in the County of Rockland that have been disproportionately impacted by the COVID-19 pandemic. Individual grants to reimburse past expenses ranging from \$5,000.00 - \$25,000.00, will be awarded to select applicants who meet the eligibility requirements below.

Eligible entities are Rockland County Based organizations that are not permanently closed, assist in distributing food to communities and individuals in the County of Rockland who experience food insecurities:

- Food Pantries
 - Food Banks
 - Community-based organizations
 - Faith-based organizations
 - Non-profit organizations
- Link: <https://rocklandgov.com/departments/county-executive/reviving-and-rebuilding-rockland/grants/#fsgp> – This grant is now closed and will no longer accept new applications.

Goal

- To provide reimbursement assistance to Rockland-based Food Pantries, Food Banks, Community-based/Faith-based/Non-profit organizations for qualified expenses incurred to assist with an increased need for food distribution due to the pandemic and promote a safe return for their clients. Through this program, these organizations would be given a sustainable opportunity to continue to assist communities and individuals in Rockland experiencing food insecurities while maintaining an emphasis on safety.

Use of Evidence

- Through meta-analysis, quantitative and qualitative assessment, and ongoing community outreach, the ARPA department identified the exponential increase of individuals who suffered from food insecurity due to the COVID-19 pandemic i.e., being laid off, being quarantined, hospitalization, etc. Adding to the already exacerbated need

for food, Nonprofits reevaluated their operational structure and increased their scope of work to accommodate the increased food need of their local communities.

- Serves Disproportionately Impacted Low-income Households and Populations, Impacted Nonprofits that experienced a negative impact, and Disproportionally Impacted Nonprofits operating in Qualified Census Tracts
- Total project spending that is allocated towards evidence-based interventions: \$81,240.80.
- Please see **Use of Evidence** Section for additional evidence-based data.

Performance Report

- This grant assisted 4 Nonprofit organizations.
- The aggregate of the grant awards is \$81,240.80.
- This grand opportunity is closed, and all beneficiaries have been awarded.

Project 2.34: NFPRR – Nonprofit Recovery Reimbursement Grant Program

Funding Amount: \$463,193.13

Project Expenditure Category: 2 – Negative Economic Impact – 2.34 Assistance to Impacted Nonprofit Organizations (Impacted or Disproportionately Impacted)

Project Overview

The County of Rockland has established a Nonprofit Recovery Reimbursement Grant program with ARPA funds, to mitigate financial hardships caused by the COVID-19 pandemic, by providing Rockland County nonprofits with reimbursement funds for eligible expenses incurred since January 1, 2022.

Nonprofit Recovery Reimbursement Grant Program is available to eligible, Rockland County based Nonprofit Organizations with 501(c)(3) status who can demonstrate a negative economic impact, to apply for individual grants, to reimburse for eligible expenses, to offset increased expenses or revenue loss caused by the COVID-19 pandemic. Eligible organizations must be an established nonprofit organization based in the County of Rockland since January 1, 2020, that has been negatively impacted by the COVID-19 pandemic.

Eligible expenses for reimbursement include but are not limited to:

- Rent
- Utilities (Electric/Gas Service, Water, Garbage)
- Internet
- Software

Individual reimbursement grants, ranging from \$5,000 - \$50,000 will be awarded to select applicants who meet the eligibility requirements and will be awarded on a rolling basis. The application submission period will close on September 15, 2023.

- Link: <https://www.gotomygrants.com/Public/Opportunities/Details/6a584f9b-bbda-4ad5-aabf-200772d7a95a> - This grant is no longer accepting new applications.

Goal

- Nonprofit Organizations were met with an unfathomable obstacle in assisting impacted and disproportionately impacted communities with an array of safety restrictions enforced and funding limitations. Many Nonprofits are still striving to return to their pre-pandemic financial status. This grant is to provide reimbursement assistance to those Nonprofits who experienced a negative economic impact due to COVID-19 pandemic.

Use of Evidence

- Through meta-analysis, quantitative and qualitative assessment, and ongoing community outreach, the ARPA department identified the exponential increase of individuals who suffered from food insecurity due to the COVID-19 pandemic i.e., being laid off, being quarantined, hospitalization, etc. Adding to the already exacerbated need for food, Nonprofits reevaluated their operational structure and increased their scope of work to accommodate the increased food need of their local communities.

- ARPA's 2022 Nonprofit Survey Results. The ARPA Department surveyed the Nonprofit Organizations. Those who provided feedback indicated that the Organization experienced a negative economic impact due to COVID-19. Based on the response and comparison of requested expenses to that which is eligible in the **Final Rule**, it was determined that reimbursement for costs such as rent, utilities, and software would assist the Organization with their financial recovery.
- Serves Disproportionately Impacted Low-income Households and Populations, Impacted Nonprofits that experienced a negative impact, and Disproportionally Impacted Nonprofits operating in Qualified Census Tracts
- Total project spending that is allocated towards evidence-based interventions: \$463,193.13.
- Please see **Use of Evidence** Section for additional evidence-based data.

Performance Report

- This grant assisted 14 Nonprofit.
- The aggregate of the grant awards is \$463,193.13.
- This grant opportunity is closed, and all beneficiaries have been awarded.

Project 1.11: TI - Transformational Impacts - Youth Employment Program

Funding Amount: \$389,772.57

Project Expenditure Category: 1 – Public Health – 1.11-Community Violence Interventions

Project Overview

Exposure to Community Violence can be considered an adverse childhood experience (ACE). Studies have shown that Youth with an increased number of ACEs often experience issues with work performance later in life.

The Corporation for a Skilled Workforce (CSW) Resilience Rainbow (pictured below) “illustrates three levels of resilience-building: individual, organizational, and community-based. In all three spheres, each of us has opportunities and obligations in helping each other to build resilience. The pot of gold at the center of this rainbow is safety. Physical, psychological, emotional safety and feeling valued are the foundation for our resiliency” - Vickie Choitz is the Director of Trauma and Resilience at Work.

CSW Resilience Rainbow



Lack of Youth employment trainings and opportunities during a critical period of development becomes a barrier to education, important resources, and equitable economic outcomes. Providing trauma informed and trauma responsive support for young people who experience ACEs is imperative to building resilience.

Since 1994, the Rockland County Youth Bureau has administered the Youth Employment Program (YEP) a workforce preparation initiative that provides employment training and job placement to eligible youth. The program's purpose is to help youth aged 14-24 gain invaluable life skills so that they can be professionally prepared and advanced for life's hurdles. The Youth Bureau operates on the principles of positive youth development. This framework focuses on strengths and positive outcomes, youth voice, and engagement, strategies that involve youth, long-term commitment, community involvement, and collaboration.

Eligible youth submit the YEP application and are then contacted for an interview with program staff. During the interview process, youth are assessed for job readiness. Youth deemed ready for employment are placed directly with one of our employers. Young people

requiring job training are invited to participate in our T.E.E.N Works program and other job readiness training workshops.

The Youth Bureau also relies on our community partners and employers to create positive developmental relationships with our young people. Developmental relationships are created by expressing care, challenging growth, providing support, sharing power, and expanding possibilities for young people.

Traditionally, The County's YEP was funded through the *New York State Office of Temporary and Disability Assistance* through the *Department of Social Services' SYEP* (Summer Youth Employment) opportunity and was offered from May 1 – September 30 for young people (aged 14-24) who met TANF qualifications.

Based on years of feedback and experience, the Youth Bureau determined that the YEP participants would benefit from year-round employment opportunities. At the time of this determination, the Youth Bureau did not have the funds within their budget to expand the YEP to a year-round program.

From October 1, 2022, to May 1, 2023, ARPA Funds were used to pay for the salaries of the YEP participants who were employed by County Departments. Starting with County Departments was the appropriate way to begin the deployment of the pilot expansion as it allowed the Youth Bureau the opportunity to prepare financial logistics, recruit additional employers and YEP applicants, and ensure their administrative staff had the tools necessary for a potential influx of YEP participants.

- **Link:** <https://www.rocklandcountyny.gov/departments/youth-bureau/youth-employment-programs>

Goal

- Providing an opportunity for year-round Youth Employment would help to prevent inequities in public health outcomes by reducing exposure to community violence and promoting safe environments in communities, especially those disproportionately impacted by the COVID-19 pandemic.
- Through an MOU, ARPA and the Youth Bureau agreed to pilot the expansion of the YEP from seasonal to year-round. These funds could also be used to enhance the equity of the YEP by offering the opportunity to young people that do not meet the TANF qualifications that are imposed by the State.

Use of Evidence

- A 2022 publication by the U.S Department of Labor Employment and Training Administration states: *“Community violence interventions” encompass a broad array of employment, economic, and social programs, including elements such as community outreach and mentorship, violence interruption and crisis management, group violence intervention, hospital-based violence intervention, school-based programs, and individualized wraparound services – in addition to job training and skills building.*
 - i. *Employment and training services targeted to adults, dislocated workers, and youth, as well as programs designed for formerly incarcerated individuals and those at-risk of committing or being a victim of violence, support more than the individual participants; over the long term they also support communities*

in addressing the gun violence epidemic affecting the country. They do this by addressing factors underpinning social determinants of violence, including inefficient labor markets and/or poor access to jobs, education, housing, and health care; poverty-related scarcity of resources such as healthy food, safe outdoor spaces, and educational experiences; and systemic issues such as racism and discrimination.

- ii. *Participation in youth employment programs can reduce involvement in violence by up to 45%.*
 - iii. *Critical among employment services are career exploration and counseling services, work experiences including summer employment and pre-apprenticeships, mentoring, and the provision of supportive services. Research shows these services to be particularly effective in reducing violent activity involvement when delivered during “out-of-school” time (i.e., non-school hours)”.*
- Serves Disproportionately Impacted Low-income Households and Populations, Impacted Nonprofits that experienced a negative impact, and Disproportionally Impacted Nonprofits operating in Qualified Census Tracts
 - Total project spending that is allocated towards evidence-based interventions: \$389,772.57
 - Please see **Use of Evidence** for additional evidence-based data.

Performance Report

- The Youth Bureau hosted a Job Fair in April of 2023 that was widely successful for employers and youth alike. By June 13, 2023, the Youth Bureau received an impressive 287 applications as a result of the Job Fair. 205 (71%) of the applicants were eligible under the SYEP funding and the remaining 82 (29%) were not SYEP eligible.
- In September 2023, the number of non-SYEP participants fell from 50 to 23. This is not the fault of the Youth Bureau as the loss to follow-up of the 27 participants was mainly due to the desire to focus on academics/sports. By the end of November 2023, the number of participants again decreased from 23 to 17.
- In January of 2024, it was announced that SYEP funding would be extended by New York State as they recognized the importance of year-round employment. The State’s SYEP extension began January 1, 2024, and is set to end June 30, 2024 (the summer funding for these participants would be available from June 30 – January 1). This meant that ARPA funds could no longer be used to cover the salaries of TANF qualifying participants as it would be a duplication of funds.
- With the additional SYEP funding, the ARPA Department continued to evaluate the pilot of non-TANF qualified youth and identified funding had decreased again to decline in enrollment. ARPA’s assessment of the pilot program through the learning agenda and PDSA model, it was determined that the young people who do not qualify for SYEP did not benefit as greatly from year-round employment. To maintain a focus on the expansion of the NYS SYEP program, the Youth Bureau and ARPA Department have agreed to dissolve the expansion of the County’s Youth Employment Program to non-qualifying participants on April 30, 2024.
- To date, \$334,055.49
- in ARPA Funds were used to reimburse the Youth Bureau for youth payroll expenses.

- A final payment will be paid in July of 2024 to reimburse the Youth Bureau for the youth payroll expenses from January 1, 2024, to April 30, 2024. This will conclude the use of ARPA funds for the expansion of the YEP program.

Project 2.22: SUP - Rockland Riverway Trail - Feasibility Study

Funding amount: \$216,966.00

Project Expenditure Category: 2 – Negative Economic Impact – 2.22 Strong Health Communities: Neighborhood Features that Promote Health and Safety

Project Overview

A Feasibility Study for the Rockland Riverway Trail has been completed. The Feasibility Study is the first phase of a County- wide, all-encompassing project to improve the built environment. Defined by the CDC as all the physical parts of where we live and work (e.g., homes, buildings, streets, open spaces, and infrastructure), the built environment influences a person's level of physical activity).

The proposed project will attach a walking and bicycling path, which is also handicapped accessible, for persons walking, bicycling or in wheelchairs from the southernmost portion of Rockland County (Piermont, NY) to the northern most portion of Rockland County (Stony Point, NY), along or near the Hudson River whenever possible.

The study determined that the Rockland Riverway Trail is feasible and will have significant positive impacts on the promotion of healthy activities, education, and will expand accessibility within the County. The Rockland Riverway Trail will also assist in improving our economic development and supporting our small businesses.

As stated in the **Final Rule**: *“The final rule includes enumerated eligible uses in disproportionately impacted communities for developing neighborhood features that promote improved health and safety outcomes, such as parks, green spaces, recreational facilities, sidewalks, pedestrian safety features like crosswalks, projects that increase access to healthy foods, streetlights, neighborhood cleanup, and other projects to revitalize public spaces”.*

Goal

- To evaluate the existing infrastructure and identify low activity areas to determine potential Social Determinants of Health and stressing a Crime Prevention through Environmental Design, SLFRF funds were used for a feasibility study to ensure safety and accessibility for all.
- As summarized in the Feasibility Study *“The objectives of the trail were established early in the process as follows:*
 - *Support the health and quality of life for Rockland County residents by maximizing access to recreation, the outdoors and active transportation.*
 - *Explore opportunities to enhance connectivity between Rockland County communities and the surrounding counties within the Hudson Valley.*
 - *Become an engine for the County's economic development and tourism.*
 - *Enhance the public realm by highlighting stories of local history and culture, as well as environmental sustainability”.*
 - The deliverable of the Feasibility Study was to determine if and how these objectives could be obtained.

Use of Evidence

- Through retrospective meta-analysis, quantitative and qualitative assessment, and ongoing community outreach, the ARPA department identified the need for accessible, well-maintained, and safe open spaces. The addition of new and upgrades to existing open spaces expands the opportunity for outdoor recreation while promoting health and safety in our neighborhoods.
- The Study itself is its own evidence-based report.
- Serves Disproportionally Impacted Low Income Households and populations, Impacted Low- or moderate-income Households and populations, and Impacted General Public
- Total project spending that is allocated towards evidence-based interventions: \$216,966.00
- Please see **Use of Evidence** Section for additional evidence-based data.

Performance Report

- The study is now complete.
- As concluded in the Feasibility Study *“The work undertaken for this study has shown clearly that the Rockland Riverway Trail is feasible. This conclusion is based on the following main arguments:*
 1. *Strong interest by the community for the trail*
 2. *High demand for this type of infrastructure investment*
 3. *Significant economic and health benefits*
 4. *Large segments of the Trail that already exist, and are ready to be upgraded*

Even though the study has identified issues and obstacles in terms of community concerns, design challenges in relation to the interactions with the local roadway system, magnitude of the investment and funding requirements, the length and structure of this project does allow for a gradual implementation that is aligned with the available funding and resolution of local impediments. The phasing of this project will demonstrate the real benefits and will alleviate some of the local concerns related to the negative expectations of the trail. It will allow the trail design to grow and adjust to the needs and demands that arise in the future, rather than being based on current perceptions. The potential to enhance the existing trail segments in terms of their resiliency, storm water management and maintenance provisions will be a great benefit to those agencies that today struggle with these obligations.”

Project RR: 004 - Community and Affordable Housing Needs Assessment

Funding amount: \$120,000.00

Project Expenditure Category: 6-Revenue Replacement - 6.1-Provision of Government Services

Project Overview

Located just 30 miles north of New York City, Rockland County is a vibrant and historically significant community within the Hudson Valley. Rockland is made up of 5 towns and 18 villages, each with its own planning and land use approval standards. The County's most recent population estimate is 339,227 residents. Rockland County is known for top-notch public schools, and a high quality of life.

Treasury has determined that affordable housing initiatives are paramount to build a more equitable and sustainable future for all. Conducting a housing assessment is a fundamental step towards creating inclusive, sustainable communities. Furthermore, it is emphasized that all initiatives should be data driven, underscoring the necessity of conducting a thorough housing assessment before embarking on any affordable housing projects. By investing time and resources in this critical phase, it lays the foundation for the successful development of future affordable housing projects. The Assessment highlights understanding local needs, optimizing resource allocation, mitigating risk, promoting sustainability, and engaging stakeholders. The recommendations presented in the ***Community and Affordable Housing Needs Assessment*** outline numerous initiatives that would propel the County to a new level of reasonable and proportional solutions for the existing affordable housing crisis.

Goals

- The Consultant will be responsible for collecting data to conduct the Rockland County Community and Affordable Housing needs assessment for the Rockland County Community Development Division. The firm will be required to complete the following tasks and submit reports, as per a schedule agreed upon by the RCCD.
- Reports were submitted to the County of Rockland Community Development Representative in an agreed upon timeframe. Reports contained a minimum of the below information outlined:
 - **Report #1:** An Inventory and Analysis of the County's existing housing stock, both at an aggregated County total and by each municipality, with the most current data, by:
 - a. Tenure (rental/ownership)
 - b. Affordability
 - i. Available for up to 30% AMI; 50% AMI; 60% AMI, 80% AMI, 100% AMI
 - ii. ETPA buildings/units
 - iii. Housing Choice Voucher allocations
 - iv. Public Housing Authority units
 - v. Workforce Housing
 - c. Units with Periods of Affordability that will be ending through December 31, 2032
 - d. Designated Special Needs units (e.g. Section 202 units, elderly/handicapped)

- e. Foreclosures
 - f. Sales and Rent trends since 2012 including pricing and vacancy/availability
 - g. Residential Building Permits issued
 - h. Financing sources used (LIHTC, HHAP, 202, etc.)
 - i. Developers – non-profit and for-profit that have developed units
- **Report # 2:** An analysis of the County’s households, both at an aggregated County total and by each municipality, with the most current data by:
 - a. Affordability
 - i. Earning up to 30% AMI; 50% AMI; 80% AMI, 100% AMI
 - ii. Homeless families and individuals
 - iii. Households receiving Rental Assistance
 - iv. Households residing in subsidized housing
 - v. Households residing in supportive housing
 - vi. Percentage of renters paying more than 50% of their income toward their housing costs
 - vii. Percentage of homeowners paying more than 50% of their income toward their housing costs
 - viii. Households commuting-in to and out of Rockland County
 - b. Seniors – Aged 55+
 - c. Disabled persons
- **Report # 3:** Analysis of the “gap” of existing housing opportunities with the housing need.
- **Report # 4:** Analysis of the particular needs of priority groups (unmet housing and service needs, gaps in service, etc.) identified for HOME-ARP funding, including evaluation of the size and demographic composition of the qualifying populations listed below:
 - a. Homeless as defined in 24 CFR 91.5
 - b. At risk of Homelessness as defined in 24 CFR 91.5
 - c. Fleeing, or Attempting to Flee, Domestic Violence, Dating Violence, Sexual Assault, Stalking, or Human Trafficking, as defined by HUD
 - d. Other Populations where providing supportive services or assistance under section 212(a) of NAHA (42 U.S.C. 12742(a)) would prevent the family’s homelessness or would serve those at greatest risk of housing instability. HUD defines these populations as individuals and households who do not qualify under any of the populations listed above.
- **Report # 5:** Best practice recommendations for Rockland to consider helping meet existing housing needs, and suggestions on the best uses for its HUD funding generally, and HOME-ARP funding specifically.
- **Meetings:** The consultant must be available for up to six (6) meetings with the County Staff and shall include the cost of these meeting in the fees. The first meeting will be immediately after the contract is executed to review data sources to be used

and data to be provided by County departments. The proposal must also contain plans for extensive public meetings or focus groups with the County's stakeholders (towns/villages, not-for-profits, school districts, and community-based organizations) and community engagement as part of their work.

The firm must consult with the following organizations:

- a. Continuum of Care (COC) serving the County's geographic area.
- b. Homeless service providers.
- c. Domestic violence service providers.
- d. Public housing agency(ies) (PHA) serving the County's geographic area. (must include all PHAs (including statewide or regional PHAs) serving the County
- e. Public agencies that address the needs of qualifying populations.
- f. Public or private organizations that address civil rights and fair housing.
- g. Public or private organizations that address the needs of persons with disabilities.

Use of Evidence

- In addition to the County's Housing Needs Assessment, Patterns for Progress completes an annual Out of Reach (OOR) report that examines the affordability of rental housing throughout the nine counties they serve in the Hudson Valley. Rockland is among those Counties. According to their 2023 OOR summary *"the report is largely based on data published annually by the National Low Income Housing Coalition (NLIHC), which compares fair market rents (FMR) with average renter wages. This year's report continues to underscore an irrefutable truth: even with long work hours or multiple jobs, most renters in our region struggle to pay for rent and modest living costs. Over the past five years, rents across our region have increased by anywhere between 25-45%. With inflation hitting a 40-year peak in 2022, the basic costs of living – food, transportation, healthcare, and more – are also out of reach"*.
- The Assessment itself its own evidence-based report.
- Serves Disproportionally Impacted Low Income Households and populations, Impacted Low- or moderate-income Households and populations, and Impacted General Public
- Total project spending that is allocated towards evidence-based interventions: \$120,000.00
- Please see **Use of Evidence** Section for additional evidence-based data.

Performance Report

- The County of Rockland, through its Office of Community Development issued a Request for Proposals (RFP) in a continuing effort to get a current picture of the community and affordable housing needs within Rockland County.
- Patterns for Progress was selected as the consultant for this project.
- Through their research, Patterns for Progress identified the following summary of needs:
 - Affordable homeownership opportunities, especially for historically disadvantaged communities.

- Increased housing options affordable to very-low, low-moderate, and middle-income households.
- Senior housing with a focus on condominiums and multigenerational communities.
- Honor existing social networks and consider proximity to community access when planning new housing developments.
- Accessible and affordable housing for residents with physical and cognitive disabilities.
- Supportive services and supportive housing for individuals with mental health needs.
- Homeless, Transitional, and Emergency housing
- Increased production of multifamily housing.
- Housing Stability and Safety promoted by Uniform Code Enforcement coupled with Anti-displacement strategies.
- Well planned housing for the growing Hasidic and Latino communities.
- Affordable housing and protections for foreign-born residents.
- Maintenance funding for Public Housing.
- Education around tenant and landlord rights and responsibilities.

Project Inventory – Active Projects

Project 1.8: RRR - Reviving Rockland Restaurant Grant Program

Funding Amount: \$459,270.16

Project Expenditure Category: 1-Public Health – 1.8 COVID-19 Assistance to Small Businesses

Project Overview

Restaurants in particular have experienced and continue to experience an undesirable outlook as a result of the COVID-19 pandemic. Many restaurants may have faced periods of closure, reduced capacity, and saw declining revenues as customers were unable to dine-in. These closures also had significant negative impacts on restaurant employment and the economy.

The County of Rockland has established the Reviving Rockland Restaurants Grant Program to combat the negative economic impacts caused by the COVID-19 pandemic. As restaurants began to reopen in June 2020, they were limited to only 25% capacity indoors, further exacerbating the economic stress of recovering from the financial hardships imposed by the pandemic. In an effort to safely recoup the additional customer capacity base and bring them back to safe operations, outdoor dining became a staple for our restaurants. The addition of outdoor dining brought back Rockland-based employees, comforted loyal patrons to return, and kept restaurants from closing. Unfortunately, in order to operate outdoor dining, additional expenses were incurred, perpetuating the economic strain to remain open. The Reviving Rockland Restaurant Grant Program will aid our restaurants to offset increased outdoor expenses and maintain sustainable outdoor dining opportunities. Individual grants to reimburse past expenses or fund future expenses ranging from \$5,000.00 - \$25,000.00 will be awarded to select applicants who meet the eligibility requirements below and will continue until the total grant amount is expended.

Eligible entities are Rockland-based businesses that are not permanently closed, have the capacity for outdoor dining, and include businesses where the public or patrons assemble for the primary purpose of being served food or drink, including but not limited to:

- Restaurants
 - Food stands/food trucks
 - Bars, saloons, lounges, taverns
 - Bakeries
 - Delis
 - Cafes
 - Breweries, Wineries, and/or microbreweries
 - Other similar places of business in which the public or patrons assemble for the primary purpose of being served food or drink
- Link: <https://rocklandgov.com/departments/county-executive/reviving-and-rebuilding-rockland/grants/#RRRGP> – This grant opportunity is no longer accepting new applications.

Goal

- To provide reimbursement assistance to restaurants who shifted their operation to include outdoor dining to increase capacity and promote safe return for their customers and employees, while also recovering financial profit loss. Through this program, restaurants would be given a sustainable opportunity to continue outdoor dining as a permanent option as well as buffer the financial burden of the winter months resulting in the closed use of outdoor spaces.

Use of Evidence

- In May 2020, US employment in restaurants was 37% lower than in May 2019, a result of the COVID-19 pandemic. 54% of NY restaurant operators said it was unlikely their restaurant will still be in business six months from now, if there are no additional relief packages from the federal government. This assistance also safely returns Rockland based, low/mod income employees back to the workforce, ensuring financial stability in their home.
- Serves Impacted Small Businesses that experienced a negative economic impact and Disproportionately Impacted Low-income Households and Populations
- Total project spending that is allocated towards evidence-based interventions: \$459,270.16
- Please see **Use of Evidence** Section for additional evidence-based data

Performance Report

- This grant has assisted 25 Restaurants.
- The aggregate of the grant awards is \$434,270.16.
- This grant is closed to new applications and is pending contract with the last application received.

Project 2.22: RRROS - Rockland Resilient Recreation Grant Program

Funding amount: \$6,263,000.00

Project Expenditure Category: 2 – Negative Economic Impact – 2.22 Strong Health Communities: Neighborhood Features that Promote Health and Safety

Project Overview

The negative public health impacts of the COVID-19 pandemic have fallen most severely on economically disadvantaged communities, exacerbating pre-existing disparities in health outcomes. The built environment, and risk factors associated with them, play a key role in determining public health outcomes. As defined by the Center for Disease Control (CDC), the built environment includes all the physical parts of where people live and work (e.g., neighborhoods, streets, open spaces, buildings, etc.). Research has shown that disparate health outcomes could be attributed to increased risk factors of the built environment (population density, spatial patterns, etc.), placing economically disadvantaged communities at an increased risk during the pandemic. Aside from the COVID-19 disease itself, the public health impacts of the pandemic include substantial impacts on mental health and public safety challenges, which are also correlated with the built environment.

The SLFRF program has recognized the connection between the built environment and public health outcomes and has acknowledged the need for investments in the built environment of economically disadvantaged communities. The **Final Rule** includes enumerated eligible uses in disproportionately impacted communities for developing neighborhood features, such as urban green spaces, that promote improved health and safety outcomes. These investments in urban green spaces, including parks, green spaces, and recreational facilities, will directly respond to the disproportionate impacts of the COVID-19 pandemic by improving built environments and promoting equitable public health outcomes.

The County of Rockland has established the Rockland Resilient Recreation Grant Program, with ARPA funds, to reduce health inequities in the county by developing and enhancing public urban green spaces in communities that were disproportionately impacted by the COVID-19 pandemic. The Rockland Resilient Recreation Grant Program will foster coordination between municipalities and nonprofit organizations and maximize the potential of these equity-focused investments in public urban green spaces.

\$6,263,000.00 will be made available through the Rockland Resilient Recreation Grant Program, which will foster these equity-focused investments in impacted communities. Individual reimbursement grants, ranging from \$5,000 up to \$200,000, will be awarded to local governments to carry out projects that develop or enhance quality public urban green spaces that will be available to all Rockland County residents. The success of these equity-focused investments has the potential to reduce social inequities, expand economic opportunities, build resilient communities, and improve health quality throughout the county.

- Link: <https://rocklandgov.com/departments/county-executive/reviving-and-rebuilding-rockland/grants/#rrrp>

Goal

- Collaboration with municipalities and nonprofits is critical for this program's goal of developing or enhancing accessible public urban green spaces. This reimbursement grant will provide funding to municipalities and nonprofits to partner on projects of equity-focused investments in public urban green spaces to improve the built environment and foster equitable health outcomes for all residents of the county.

Use of Evidence

- Through retrospective meta-analysis, quantitative and qualitative assessment, and ongoing community outreach, the ARPA department identified the need for accessible, well-maintained, and safe open spaces. The addition of new and upgrades to existing open spaces expands the opportunity for outdoor recreation while promoting health and safety in our neighborhoods.
- Serves Disproportionally Impacted Low Income Households and populations, Impacted Low- or moderate-income Households and populations, and Impacted General Public
- Total project spending that is allocated towards evidence-based interventions: \$6,263,000.00.
- Please see **Use of Evidence** Section for additional evidence-based data

Performance Report

- There are currently 34 approved open space projects throughout the County of Rockland.
- This grant is closed to new applications and is pending possible contracts with the last applications received.

Project 1.11: TI 2 – Transformational Impacts Program HAAC Youth After School Enrichment Program

Funding Amount: \$200,000.00

Project Expenditure Category: 1 – Public Health – 1.11 Community Violence Interventions

Project Overview

The SLFRF program has recognized the connection between community violence and public health outcomes and encourages communities to use SLFRF funds to address community violence in disproportionately impacted communities as a public health issue.

Preventing and responding to Community Violence is paramount in ensuring a safe built environment. Community Violence is a public health challenge that was exacerbated by the pandemic and has disproportionately impacted low-income communities. Exposure to violence can create serious short-term and long-term harmful effects to health and development, and repeated exposure to violence may be connected to negative health outcomes. Addressing community violence as a public health issue may help prevent and even reduce additional harm to individuals, households, and communities.

Haverstraw is a diverse community that was disproportionately impacted by the COVID-19 pandemic. The community was impacted by a high infection and mortality rate throughout pandemic. In addition to the direct health impacts, pre-existing issues with community violence were exacerbated. The Haverstraw African American Connection (HAAC) is dedicated to serving people and making the community the best that it can be. Throughout the year they educate, support, strengthen and uplift the communities they serve through ongoing community service projects. Among many of their initiatives, HAAC offers a Youth Enrichment Program in the heart of Haverstraw.

Link: <https://www.thehaac.com/about-3>

Goal

- There has been a significant challenge to find a safe and supervised place for students to be enriched in their academics as well as physical and mental wellbeing after school hours. The program offers a safe place where children are supervised during the hours where they would potentially be without parental supervision and at-risk for behaviors detrimental to themselves and the community. The children are engaged in positive cultural activities, provided with educational support and meals.
- The After School Enrichment Program was initially developed by HAAC to respond to the needs of the youth and parents during the COVID-19 pandemic. The pandemic interrupted education and services while adding excess strain on parents, specifically in the low to moderate income communities. As parents and youth were thrust into a new daily routine, most were juggling providing for the families with multiple jobs and deciding on how to adequately care for their children while making ends meet. It is evident that this struggle remains the same in a post-pandemic world for many of the families served.
- Due to the success and dire need of the After School Enrichment Program, HAAC determined that it is paramount to continue these services throughout the summer months while school is no longer in session. The continuation of the program will ensure

the safety of the youth participants and youth employees and reduce their exposure to community violence.

Use of Evidence

- Our method will use meta-analysis and evidence-based practices (Community Violence Interrupters) to interrupt the spread of violence by addressing community violence as a public health issue may help prevent and even reduce additional harm to individuals, households, and communities. It is our hope that addressing and healing generational and environmental trauma will help to provide a safe atmosphere and restore a sense of pride for our communities.
- Serves Disproportionately Impacted Low-income Households and Populations, Impacted Nonprofits that experienced a negative impact, and Disproportionally Impacted Nonprofits operating in Qualified Census Tracts
- Total project spending that is allocated towards evidence-based interventions: \$200,000.00.
- Please see **Use of Evidence** Section for additional evidence-based data.

Performance Report

- There are 42 youth enrolled in the program, approximately 20 that participate daily.
- There are 3 employees, and 2 student workers.
- Total Number of Events: 15
 - 2024 Quarter 2: 15
- They have noticed tremendous improvement in the academic and social growth in all their participants. Examples of success in academia:
 - One of their youth attended college on a full scholarship and completed her degree.
 - Another student is going to college on a full academic scholarship.
 - One student achieved honor roll consistently through the year.
 - Ten of their students have excelled in a variety of the Arts and have been recognized for their accomplishments.
- Their students are the most recognizable and sought after students in the county and beyond. Examples of opportunities:
 - They been invited to and have participated in parades throughout the county and West Point
 - Hosted historical events, and have performed at churches and temples in the various counties Whittington the state
 - They have been invited to the White House for a personal tour of our capital by Congressman Michael Lawler and others.

Project 1.11: TI 3 – Transformational Impacts Program - Spring Valley Youth Police Initiative

Funding Amount: \$710,897.63

Project Expenditure Category: 1 – Public Health – 1.11 Community Violence Interventions

Project Overview

Treasury recognizes the importance of comprehensive approaches to challenges like violence. The final rule includes an enumerated eligible use for community violence intervention programs in all communities, not just the disproportionately impacted communities eligible under the interim final rule. Given the increased rate of violence during the pandemic, Treasury has determined that this enumerated eligible use is responsive to the impacts of the pandemic in all communities.

The Youth & Police Initiative or YPI, is a training program created by the Massachusetts-based North American Family Institute to enhance police officers and prosecutors understanding of the beliefs, values, and experiences of local youth, while ensuring that youth develop a genuine regard for the challenges that police officers face on the job.

YPI provides structured dialogue, team building and role-playing scenarios that allow all participants – youth, educators, police and prosecutors – to tackle the real and hard issues of crime prevention and community policing. YPI is an opportunity for Rockland County’s police departments to increase their visibility in their communities and to bring about positive changes in their relationships with local at-risk youth. Every YPI program is adapted to fit the specific needs of the community being served.

The Village of Spring Valley’s Youth and Police Initiative’s objective:

- Discuss Social & Political issues and how these issues impact residents of all ages
 - Enhance officers’ community policing skills
 - Strengthen prosecutors’ knowledge of the community
 - Build long-term positive relationships between local police, prosecutors, and Rockland County’s at-risk youth
 - Create links to positive, pro-social community resources by having guest speakers come to classes
 - Create possibilities for mentorship
 - Facilitate ways for youth to learn about career paths in Public Safety
-
- Link: <https://villagespringvalley.org/youth-police-initiative/>

Goal

- The YPI program is a six-day program that ends with a graduation gathering that includes food, fun and awards. The program does not end at graduation. This program brings people together in a family like atmosphere that continues to support each other after graduation by continuing communication via group chats along with other bonding activities and events. It is their hope that addressing and healing generational and environmental trauma will help to provide a safe atmosphere and restore a sense of pride for the communities served through their program.

- From the start of the program and through post-graduation activities, the program identifies the root cause of violence in individuals, households, and communities, helps to mediate historic and present conflicts, transform thinking and behaviors of those at the highest risk, change the norms that support violent activity, and provide consistent and accessible support to sustain the positive transformation.

Use of Evidence

- Our method will use meta-analysis and evidence-based practices (Community Violence Interrupters) to interrupt the spread of violence by addressing community violence as a public health issue may help prevent and even reduce additional harm to individuals, households, and communities. It is our hope that addressing and healing generational and environmental trauma will help to provide a safe atmosphere and restore a sense of pride for our communities.
- Serves Disproportionately Impacted Low-income Households and Populations, Impacted Nonprofits that experienced a negative impact, and Disproportionally Impacted Nonprofits operating in Qualified Census Tracts
- Total project spending that is allocated towards evidence-based interventions: \$710,897.63.
- Please see **Use of Evidence** Section for additional evidence-based data.

Performance Report

- Total Number of Participants: 150
- Total Number of Events: 21
 - 2024 Quarter 1: 5
 - Educational: 3
 - Reward: 2
 - Funded by ARPA: 3
 - 2024 Quarter 2: 16
 - Educational: 6
 - Community: 5
 - Reward: 5
 - Funded by ARPA: 11
- The YPI Administrators have seen tremendous academic and personal growth with the young people in their program. Examples of growth include:
 - One participant navigated their academic years within the North Rockland Central School District, graduating in 2022. Pursuing their interest in healthcare, they further honed their skills at BOCES Trade School, specializing in the Dietary Department at Good Samaritan Hospital. However, their impact extends far beyond the classroom. As a devoted member of the *Nyack NAACP Youth Council* since 2019, their leadership qualities shone brightly. Rising through the ranks to become Vice-President in 2021 and eventually President in 2022, their dedication to social justice and community empowerment has been unwavering. Moreover, they are a very active member of the Spring Valley Youth and Police Initiative Program, where they contribute to fostering positive relationships between youth and law enforcement officers, further solidifying their commitment to community engagement and cohesion.

- Another participant has been a standout student and athlete in the Spring Valley Youth and Police Initiative (YPI) for the past five years. Throughout their high school career, they have excelled in both football and track and field, embodying the core values of dedication, discipline, and community that YPI strives to instill in its participants. Recently, they attended their signing day at North Rockland High School, where they committed to attending St. Thomas Aquinas College on a full scholarship for track and field. Their achievement is a testament to their hard work and perseverance, both on and off the field, as they maintain an impressive near-perfect GPA of almost 4.0.
- The last example for this report is a story of resilience, strength, and unwavering hope. Diagnosed with cystic fibrosis at just eight months old, this young person's life has been a series of battles against an illness that could easily have diminished their spirit. Now 16, they continue to defy expectations and inspire those around them. Despite these challenges, they found a second home in the Spring Valley YPI program. For the past eight years, this program has been an important part of their life, providing not only support but also a wealth of experiences that have enriched their childhood. A Golf Outing hosted by the Ramapo PBA on Monday, June 17, 2024, is a testament to this young person's impact on those around them. This event honors their incredible journey and the strength they have shown throughout their young life. When asked about who they wanted by their side, their choice was clear: Detective Sergeant Charles and PO Andre Riobe from Spring Valley Youth and Police Initiative Program, both of whom have become like fathers to them. The support of Detective Sergeant Charles and PO Andre Riobe has been constant, and YPI is more than just a program to this young person; it is their family. Their story is not just one of survival but of thriving against the odds. Their courage and resilience serve as a powerful reminder that even in the face of significant challenges, the human spirit can shine brightly, lighting the way for others.

Project 1.12: 911DS - 9-1-1 Dispatch Software

Funding Amount: \$616,959.00

Project Expenditure Category: 1-Public Health - 1.12-Mental Health Services

Project Overview

The County of Rockland's Sheriff Communications Division procured an enhanced, effective, efficient, and comprehensive emergency medical dispatch system for its residents and visiting population. This includes people experiencing mental illness, behavioral crisis, or emotional disturbance. The Division seeks to ensure the safest and most effective outcome for resolving these types of incidents, including the safety of the victim(s), responder(s), and the general public.

The contract was awarded to Priority Dispatch for their Priority Dispatch software and maintenance. The dispatch system will provide expert system priority dispatch along with integrated two-way CAD (ProQA) software. Priority Dispatch will in concert with their Automated Quality Assurance Dispatch case review software (AQUA). One enhancement in particular is the implementation of the International Academy of Emergency Dispatch (IAED) call-processing program. The IAED would develop the option of "triaging down" certain behavioral health incidents, so that they can be handled (potentially) by more appropriate resources, such as 9-8-8 or the County's Behavioral Health Response Team (BHRT). IAED continues to implement a number of new programs that are specifically designed to facilitate the diversion of 9-1-1 calls to 9-8-8 or behavioral resources when safe and feasible.

At present, 60% of all New York counties are utilizing the system and have demonstrated improved results. It is imperative that the County align with IAED for this project, because the product allows for the collaboration of both mental health clinicians and emergency services leaders to determine the best practices for handling these calls. The County does not have access to the national data and subject experts that IAED brings to bear with their programs.

Additionally, with so many agencies in the United States using IAED for call processing, it is anticipated that the IAED product would allow us to better adapt to changes in the 9-8-8 program.

The State and Local Fiscal Recover Fund's Final Rule fully supports the implementation of such a system. *"Services that respond to these [behavioral health] impacts of the public health emergency may include services across the continuum of care, including both acute and chronic care, such as prevention, outpatient treatment, inpatient treatment, crisis care, diversion programs (e.g., from emergency departments or criminal justice system involvement), outreach to individuals not yet engaged in treatment, harm reduction, and supports for long-term recovery (e.g., peer support or recovery coaching, housing, transportation, employment services)."*

Goal

- Mental health symptoms and substance use increased during the COVID-19 pandemic. According to the Mid-Hudson Region Community Health Assessment 2022-2024 report, evidence shows that 64% percent of Rockland County respondents indicated that their mental health and substance use was highly impacted in the past year. This was ranked

as the most pressing item of the identified health issues in Rockland County for 2022. The dispatch system will provide expert system priority dispatch along with integrated two-way CAD (ProQA) software. Priority Dispatch will in concert with their Automated Quality Assurance Dispatch case review software (AQUA). This linkage to resources can provide increased wellness, stability and safety for individuals and the community.

Use of Evidence

- The ECC's (Emergency Communications Center) utilization of protocol-based call-talking systems has yielded positive outcomes. Early in its adoption, ECC Call Taker Jose demonstrated the effectiveness of the protocols when he successfully assisted a driver experiencing a stuck accelerator. Jose was able to provide step-by-step instructions using the protocol system, enabling the driver to navigate out of traffic and stop their vehicle safely. [...] The thoroughness of these protocols ensures the ECC is prepared to handle any emergency, including active shooter situations. By standardizing instructions and procedures, ECC call takers can ensure a consistent response which is critical for emergencies that generate multiple callers. The protocol system has also made the ECC's work more measurable. In collaboration with the Office of Performance Data and Analytics, the ECC is actively working to further enhance its operations by participating in the City's performance management process. Data is being leveraged to improve performance at an individual, team, and agency-wide level. (<https://sjemed.com/article/97367>)
- Serves Disproportionately Impacted Low-income Households and Populations, Impacted Households, General Public
- Total project spending that is allocated towards evidence-based interventions: \$616,959.00.
- Please see **Use of Evidence** Section for additional evidence-based data.

Performance Report

- At this time of the report, the implementation of the new 911 software was kicking off. To date, there have been two training sessions with more to follow. It is anticipated that full implantation of the new program will be ready by September 2024.

Project 2.34: FSE - Food Security Equipment Reimbursement Grant

Funding Amount: \$500,000.00

Project Expenditure Category: 2 – Negative Economic Impact – 2.34 Assistance to Impacted Nonprofit Organizations (Impacted or Disproportionately Impacted)

Project Overview

The Food Security Equipment Reimbursement Grant aims to provide reimbursements of funds to organizations for pantry related equipment expenses that encourage capacity building by increasing and improving the services pantries provide to their communities. This capacity building will ultimately cultivate a more resilient network of food pantries, which can improve their ability to weather future public health emergencies.

Individual reimbursement grants of up to \$20,000.00 will be awarded to select organizations who meet the eligibility requirements. Awarded organizations may be reimbursed for funds used for eligible equipment expenses incurred beginning January 1, 2024, and until the application submission period closed on June 30, 2024.

Eligible expenses include equipment expenses related to the following pantry functions:

- Food storage
 - Food distribution
 - Pantry Related Software
- Link: <https://www.gotomygrants.com/Public/Opportunities/Details/e646d227-a407-47b4-95e2-21ea13ff6d5b> - This grant is closed and no longer accepting new applications.

Goal

- To provide reimbursement funds to organizations for pantry related equipment expenses that encourage capacity building by increasing and improving the services pantries provide to their communities.

Use of Evidence

- According to a November 2023 Rockland Communities Against Hunger study, there were approximately 77,000 individuals served by Rockland County food pantries in September 2023, which is up by 11.6% from 69,000 individuals served during the height of the COVID-19 negative economic impact of Covid-19 pandemic. In that same study, food pantries reported funding for equipment related to food pantry functions being one of the top needs of food pantries in Rockland County.
- Serves Disproportionately Impacted Low-income Households and populations, Impacted Nonprofits that experienced a negative economic impact, and Disproportionately Impacted Nonprofits operating in Qualified Census Tracts.
- Please see **Use of Evidence** Section for additional evidence-based data.

Performance Report

- We have not awarded any Nonprofit Organizations; we received one application. This application is currently under review for eligibility and determination.
- This grant opportunity is closed for new applications.

Project 6.1: SVHDFC - Spring Valley Housing Development Fund Corporation

Funding Amount: \$790,000.00

Project Expenditure Category: 6-Revenue Replacement - 6.1-Provision of Government Services

Project Overview

The County of Rockland is a desirable area to live and work in the New York metropolitan region. The region's strategic position in relation to the major metro area of New York makes this a solid location for both commercial and residential development. Rockland County's transportation network and strategic location will provide the impetus for an overall pattern of growth over the long-term.

Rockland County faced an unprecedented scenario in 2020 as the Coronavirus Pandemic swept across the nation and the state of New York disrupting economic activity. The Pandemic resulted in an increased demand for affordable housing. This reigns especially true within the County's densely and ever-growing populated areas.

The subject property is an existing, occupied three-story, plus basement walk-up, low-income affordable, cooperative located at 18-36 Columbus Avenue, Spring Valley, NY consisting of 54 one-, two- and three-bedroom apartments. The average of all units is 65% AMI. The building offers a community room, an on-site laundry room, and seventy-five parking spaces on grade for the shareholders. The Spring Valley HDFC is a conveniently located residential area within walking distance of the downtown area of Spring Valley. Public transportation is also located within walking distance of the cooperative and residents have access to restaurants, stores, health clinics, and municipal buildings which are all situated within half of a mile from the property.

This dwelling was constructed in 1961 and needs refurbishment as well as financial support. Assistance with Construction loan Gap-filling and renovative projects will greatly aide the Spring Valley Housing Development Fund Corporation to preserve the existing affordable cooperative.

Each of these projects maintains an importance on the promotion of healthier populations, healthier outcomes, healthier economy, and improved infrastructure for the current and future residents. These initiatives directly align to the Affordable Housing goals set forth in the United States Department of Treasury's Final Rule. ARPA Funds to provide assistance with Construction loan Gap-filling and reimbursement of funds for (eligible) expenses incurred with the renovative projects for the Spring Valley Housing Development Fund Corporation Columbus Avenue Project.

Goal

- The amount of \$740,000 is necessary to close the financing gap so the construction loan can be converted to a permanent loan.
- In addition, an estimated amount of \$50,000 is needed to fix the water issue in the basement apartments and parking area. Also, a portion of the funds may be used to mitigate water issues by landscaping the outside of the building.
- The aggregate of \$790,000.00 will help to keep the existing Affordable Housing units available to current residents and provide the upgrades needed to sustain the dwelling.

Use of Evidence

- Under the **Final Rule**, *“Development, repair, and operation of affordable housing and services or programs to increase long-term housing security”* is an enumerated eligible use to respond to impacts of the pandemic on households and communities. Treasury continues to strongly encourage the use of SLFRF for affordable housing and has updated this FAQ to promote clarity and administrability in the use of these funds. *Affordable housing projects must be responsive and proportional to the harm identified. This standard may be met by affordable housing projects—which may involve large expenditures and capital investments—if the developments increase the supply of long-term affordable housing for households that experienced associated pandemic impacts under the final rule.* (Department of Treasury, Final Rule FAQ, 2024)
- The County of Rockland’s **Housing Needs Assessment**
- Serves Disproportionally Impacted Low Income Households and populations, Impacted Low- or moderate-income Households and populations, and Impacted General Public
- Total project spending that is allocated towards evidence-based interventions: \$790,000.00.
- Please see **Use of Evidence** Section for additional evidence-based data

Performance Report

- At this time, a contract has been drafted and all parties are working to finalize the details of the project.
- It is expected by end of September 2024, the contract will be signed and funding will be available

Project 6.1: RR – 001 - Land Acquisition - Eberling Property

Funding Amount: \$1,453,750.00

Project Expenditure Category: 6-Revenue Replacement - 6.1-Provision of Government Services

Project Overview

The pandemic underscored the importance of safe, affordable housing and healthy neighborhood environments to public health and economic outcomes. In response to community engagement and surveys, the most requested use of ARPA Funds has been to secure affordable housing options for all Towns and Villages throughout the County.

Rockland County faced an unprecedented scenario in 2020 as the Coronavirus Pandemic swept across the nation and the state of New York disrupting economic activity. The Pandemic resulted in an increased demand for affordable housing.

The funding will be used for the appraisal and acquisition of 4 Acres of Land, on 36 New Hempstead Road, New City, NY. The property would be purchased on behalf of Rockland Housing Action Coalition, Inc. The Rockland Housing Action Coalition (RHAC), Inc. will be responsible for the development of no less than six (6) affordable housing units for homeownership on this property.

RHAC will complete a Phase I Environmental Study. They will also secure insurance for the property. In addition, RHAC will hire an engineer to subdivide the property into a minimum of 6 building lots. After the engineer completes the subdivision/site plan, RHAC and RHAC's engineer will attend a Town of Clarkstown Technical Advisory Committee (TAC) meeting. At the meeting the TAC committee members will review the subdivision/site plan.

Goal

- The subject property would be acquired to promote affordable Essential Worker and Community Workforce housing. A percentage of this property would also be designated as open space to emphasis on positive health outcomes through urban green space opportunities. The acquisition would maintain an importance on the promotion of healthier populations, healthier outcomes, healthier economy, and improved infrastructure for the current and future residents.

Use of Evidence

- Under the ***Final Rule***, “*Development, repair, and operation of affordable housing and services or programs to increase long-term housing security*” is an enumerated eligible use to respond to impacts of the pandemic on households and communities. Treasury continues to strongly encourage the use of SLFRF for affordable housing and has updated this FAQ to promote clarity and administrability in the use of these funds. *Affordable housing projects must be responsive and proportional to the harm identified. This standard may be met by affordable housing projects—which may involve large expenditures and capital investments—if the developments increase the supply of long-term affordable housing for households that experienced associated pandemic impacts under the final rule.* (Department of Treasury, Final Rule FAQ, 2024)
- The County of Rockland’s ***Community and Affordable Housing Needs Assessment***.

- Serves Disproportionally Impacted Low Income Households and populations, Impacted Low- or moderate-income Households and populations, and Impacted General Public
- Total project spending that is allocated towards evidence-based interventions: \$1,453,750.00.
- Please see **Use of Evidence** Section for additional evidence-based data

Performance Report

- The property was appraised on October 31, 2023. The cost of the appraisal was \$3,750.00
- The closing of the property was on April 25, 2024. The cost of the land was \$1,450,000.00
- The engineer is finalizing the site plan for Eberling Homes.
- The next step is to appear before the Clarkstown Technical Assistance Committee (TAC)
- An application was submitted to NYS Homes and Community Renewal and announcement of award is expected in late August
- The application for the Federal Home Loan Bank (FHLB) was submitted and award announcements are expected in 4th quarter
- In the process of completing the construction loan application from the Community Preservation Corporation

Project RR: RLF - Revolving Loan Fund

Funding Amount: \$13,500,000.00

Project Expenditure Category: 6-Revenue Replacement - 6.1-Provision of Government Services

Project Overview

The County of Rockland is a desirable area to live and work in the New York metropolitan region. Rockland County faced an unprecedented scenario in 2020 as the Coronavirus Pandemic swept across the nation and the state of New York disrupting economic activity. The Pandemic resulted in an increased demand for affordable housing. This reigns especially true within the County's densely and ever-growing populated areas. While it would be beneficial for the County of Rockland to continue to expand and offer more workforce opportunities, it is unfavorable to do so without the existence of affordable, attainable long-term and short-term housing.

Treasury has determined that SLFRF funds may be used to finance certain loans that finance affordable housing investments, as it is typical for state and local governments to finance such investments through loans. The establishment of a **Revolving Loan Fund** would play a pivotal role in addressing the housing crisis in Rockland. Managed by the Department of Community Development, the fund would be open to Nonprofit Agencies and Developers to apply for low-interest loans for affordable housing projects. Such projects include but are not limited to:

- Land Acquisition
- Housing Creation and Preservation
- Short Term Gap Financing
- Acquisition/rehabilitation of existing affordable rental or homeownership multifamily housing to secure long-term affordability (with compliance periods)
- Preservation/rehabilitation of existing affordable housing with expiring compliance periods

Funding decisions will be made on factors associated with best achieving the goals outlined in the to be developed Request for Application (RFA). The RFA will outline in detail all restrictions on the use of funds and the monitoring process.

Goal

- Provide financial support for the creation of affordable housing throughout Rockland County.
- Make projects within Rockland County more competitive for other funding sources.
- To provide support for the acquisition, preservation, rehabilitation or development of affordable housing projects that may otherwise not be able to secure other funding.

Use of Evidence

- Under the **Final Rule**, *“Development, repair, and operation of affordable housing and services or programs to increase long-term housing security” is an enumerated eligible use to respond to impacts of the pandemic on households and communities. Treasury continues to strongly encourage the use of SLFRF for affordable housing and has*

updated this FAQ to promote clarity and administrability in the use of these funds. Affordable housing projects must be responsive and proportional to the harm identified. This standard may be met by affordable housing projects—which may involve large expenditures and capital investments—if the developments increase the supply of long-term affordable housing for households that experienced associated pandemic impacts under the final rule. (Department of Treasury, Final Rule FAQ, 2024)

- The County of Rockland's **Housing Needs Assessment**
- Serves Disproportionally Impacted Low Income Households and populations, Impacted Low- or moderate-income Households and populations, and Impacted General Public
- Total project spending that is allocated towards evidence-based interventions: \$13,500,000.00.
- Please see **Use of Evidence** Section for additional evidence-based data

Performance Report

- The Revolving Loan Fund was open for applications from June 6, 2024, to July 11, 2024.
- Six (6) applications were received and are currently under review.

Project 8: AF SP LHPCM - Stony Point Lowlands Hills Park Climate Mitigation Efforts

Funding Amount: \$259,800.00

Project Expenditure Category: 8-Natural Disasters – 8.12 - Mitigation

Project Overview

In 2020, 2021, and 2022, there were an average of 20 weather and climate disasters each year, compared to an average of 12.8 weather and climate disasters annually from 2010 to 2019. From 2020 to 2022 alone, these natural disasters resulted in devastating damages. The impacts of natural disasters range from loss of life and other consequences for health and safety to destruction of property and infrastructure and disruption of economic activity. The increasing prevalence of natural disasters and corresponding increased costs of responding to and recovering from natural disasters places additional burden on local towns.

Even when individuals and families in an impacted area are not displaced after a natural disaster, they may face significant costs to repair homes to become livable again. Furthermore, the damage caused by natural disasters can cause short-term earnings losses, as it may physically prevent individuals from working, whether due to housing displacement, physical barriers in accessing their place of employment or business, sustained damage to their place of employment or business, or injuries sustained as a result of the natural disaster. Natural disasters also can generate a significant volume of debris and damage buildings and infrastructure that provide critical or essential services to the general public, such as educational, utility, emergency, medical, and other services, creating strains on local governments and other responders.

The U.S. Department of Treasury's Interim Final Rule provides rigid eligible expenditure requirements. Mitigation activities to lessen or avert the threat of a natural disaster and its potential physical or negative economic impacts, including structure elevation, mitigation reconstruction, dry flood proofing, structural retrofitting, non-structure retrofitting, wind retrofit, and infrastructure retrofit are specifically emphasized in the Interim Final Rule. Treasury has explained that mitigation activities may be stand-alone projects that reduce or eliminate the potential impacts of the threat of natural disaster and may also be incorporated into repair or reconstruction projects that address the impacts of a natural disaster.

Lowlands Hills Park (also known as Charles Eccher Park) located at 40 Lowland Hill Road in the Town of Stony Point is a well-loved and frequently utilized park. The park is used regularly by numerous community groups and the public for events, family gatherings, fostering community engagement, enjoyment and appreciation of natural resources and a healthy, active lifestyle. The Park suffered significant flooding during the July 9, 2023, storm event due to an overflow of the Cedar Pond Brook bank. The stormwater and stream overbank flood conveyed debris/sediment, washed away a portion of the park, damaged equipment, destroyed fencing and washed away mulch in the play area.

The location of the park leaves the grounds vulnerable to potential additional damages in future storm events. Park flooding not only makes the park unavailable for use during and immediately after storm events, but for extended periods while clean-up, replacement and restoration is underway. Enhancing the park's resilience by supporting the Town's Climate Mitigation and Storm Hardening efforts, will create a more inviting and inclusive space ensuring long-term access to the park for all.

Goals

- Installation of a retaining wall will prevent future flooding of the Cedar Pond Brook, reduce stream bank erosion and sedimentation and allow for the park to continue providing service to the community without extended disruption.
- The scope of work includes the following tasks:
 - Installation of a retaining wall along the existing stream to prevent further overbank flooding
 - Removal of a fence damaged by flooding and other debris washed into the park
 - Restoration of areas damaged by significant flooding event which occurred in July of 2023, including athletic field space and a playground. The playground will meet all ADA requirements.
 - All disturbed areas will then be topsoiled and seeded.
 - The damaged fence will be replaced and lastly;
 - Mulch will be replaced around the playground area.

Use of Evidence

- On July 11, 2023 - Governor Kathy Hochul has requested federal aid in the cleanup of the Hudson Valley after Sunday's Storm. Many main roads are still closed as debris and destruction scatter the area. ... The extent of the destruction from the slow-moving storm, which pounded the area with up to 8 inches of rain, won't be known until residents and officials can begin surveying the damage. But officials said the storm had already wrought tens of millions of dollars in damage. ... Hochul issued a State of Emergency in response to the conditions throughout Orange County. On Monday, she expanded the State of Emergency to include Rockland County, as well as Clinton, Essex and Oswego counties upstate.
- Serves Disproportionally Impacted Low Income Households and populations, Impacted Low- or moderate-income Households and populations, and Impacted General Public
- Total project spending that is allocated towards evidence-based interventions: \$259,800.00.
- Please see **Use of Evidence** Section for additional evidence-based data

Performance Report

- The work for this project has not commenced.
- Performance updates by the Town to the ARPA will be required monthly at the inception of the project.

Project: RR- GSH CCLCS - Good Samaritan Hospital Cardiac Catheterization Laboratory Construction Support

Funding Amount: \$1,200,000.00

Project Expenditure Category: 6-Revenue Replacement - 6.1-Provision of Government Services

Project Overview

Since the onset of the COVID-19 pandemic GSH has discharged 3,417 patients who were admitted due to COVID-19 infections. Based upon this distinct patient data, GSH estimates that 2,335 of these patients are at greater risk for cardiovascular issues.

With the support and assistance from the County of Rockland, GSH aims to support patients with long haul COVID-19 symptoms and those with cardiac conditions receive specialized diagnostics and treatments to bolster our ability to respond effectively to the increasing number of patients with long haul COVID-19 symptoms. The GSH Cardiac Catheterization laboratory will focus primarily on diagnosing and treating cardiovascular conditions, particularly those related to the heart and blood vessels. While long-haul COVID-19 symptoms primarily affects multiple systems in the body rather than just the cardiovascular system, there are certain ways in which the GSH Catheterization Laboratory will support patients experiencing such symptoms:

- **Evaluation of Cardiac Symptoms:** Long-haul COVID-19 can lead to various cardiac symptoms such as chest pain, palpitations, shortness of breath, and arrhythmias. Patients experiencing these symptoms may undergo diagnostic procedures in the GSH Catheterization Laboratory such as coronary angiography to assess the condition of their coronary arteries and rule out any cardiac involvement.
- **Assessment of Cardiac Damage:** Patients with long-haul COVID-19 may develop cardiac complications such as myocarditis or cardiomyopathy. Cardiac imaging techniques like cardiac catheterization with ventriculography or intravascular ultrasound can help in assessing the extent of cardiac damage and guiding appropriate treatment.
- **Management of Acute Cardiac Events:** Long-haul COVID-19 patients may be at increased risk of acute cardiovascular events such as heart attacks or pulmonary embolisms. The GSH Catheterization Laboratory will be equipped to provide emergent interventions such as percutaneous coronary intervention (PCI) or thrombectomy to restore blood flow and minimize tissue damage.
- **Monitoring of Cardiac Function:** Long-term monitoring of cardiac function may be necessary for patients with persistent symptoms or complications related to COVID-19. This can include serial cardiac catheterizations or other imaging modalities to track changes in cardiac structure and function over time.

Long-term COVID-19, also known as post-acute sequelae of SARS-CoV-2 (PASC), can cause various persistent health problems, including significant cardiovascular complications. These complications can range from myocarditis (heart inflammation) to heart failure and arrhythmias. The GSH Cardiac Catheterization Laboratory will utilize support from the County of Rockland to expand the Laboratory's operating hours to accommodate the increasing demand for cardiac evaluations for patients with long term COVID-19. Additionally, the support from the County of Rockland will be utilized to invest in new technologies and diagnostic tools for more precise assessments while increasing in service trainings for Cardiac Catheterization Laboratory

staff and providers to ensure they are trained on all aspects of care delivery related to the Laboratory's procedures and stay up to date with the latest standards of care

Goal

- As patients with long haul COVID-19 continues to rise, the demand for highly specialized and advanced systems for diagnosing and treatment patients will increase and place a significant strain on Good Samaritan Hospital's resources. With specialized cardiac catheterization laboratory capacity, GSH will be able to manage any new influx of cases and support patients in need of higher-level acuity services.
- The GSH Cardiac Catheterization Laboratory plays a crucial role in supporting and managing long-term COVID-19 patients by expanding access to care to increase early detection rates for cardiac abnormalities and improving patient outcomes with minimally invasive procedures to restore heart function and overall quality of life. The GSH Cardiac Catheterization Laboratory will provide advanced treatment planning which will help providers and patients make more informed treatment decisions and care plan updates based on a more accurate cardiac diagnosis.

Use of Evidence

- *"Incident myocarditis persisting 28-60 days post Covid-19 affected approximately one in eight (13%) patients, which is lower than reports from previous studies (27%-60%). The etiology of myocarditis was predominately SARS-CoV-2 infection and, less commonly, myocardial ischemia due to coronary artery disease. The clinical significance of myocarditis complicated Covid-19 is highlighted by associations with pulmonary fibrosis diagnosed during follow-up". (A Multisystem, Cardio-Renal Investigation of Post-Covid-19 Illness, Nature Medicine – Various Authors, 2022)*
- Serves Disproportionally Impacted Low Income Households and populations, Impacted Low- or moderate-income Households and populations, and Impacted General Public
- Total project spending that is allocated towards evidence-based interventions: \$1,200,000.00
- Please see **Use of Evidence** Section for additional evidence-based data

Performance Report

- The work for this project has not commenced.
- Performance updates by Good Samaritan Hospital to the ARPA will be required monthly at the inception of the project.

Project 7.1: eSCMS - eSourcing and Contract Management System

Funding Amount: \$75,000.00

Project Expenditure Category: 3 – Public Health-Negative Economic Impact: Public Sector Capacity – 3.4 – Public Sector Capacity: Effective Service Delivery

Project Overview

The Regional eSourcing, Contract Management and eMarketplace Procurement software (“eSourcing and Contract Management System”) will benefit various County departments in the mission to revive and rebuild Rockland. Expanding the eSourcing Procurement software from solely County-wide to Regional creates a Regional online marketplace for all Local Governments and Nonprofit Organizations to access contracts awarded by four counties. A central repository for such information will save participants time, enforce compliance to competitive bidding statutes, amplify outreach to Minority and Women Owned Businesses, and provide a unified structure for the procurement process.

The software helps to lower barriers to the competitive bidding process, enhance outreach for small, MWBE, and service disable veteran businesses, and assist businesses in developing their online sales capability through the marketplace by eliminating the current subscription fee that vendors must pay to received automatic emails for bidding opportunities. It also creates a central repository that will save all participants time and provide a unified structure for the procurement process.

Goal

- Lowering barriers to the competitive bidding process contributes to fair, innovative, cost-efficient procurement solutions and create a more extensive and equity-focused bid process for local businesses who were all negatively affected by the COVID-19 pandemic. Better and more equitable access to the competitive bidding process can assist businesses more award opportunities to alleviate financial hardships caused by the pandemic.

Performance Report

- The system will be moved to production and go live on August 1, 2024. Extended software testing was necessary prior to go-live.
- Although the system will not go live until August 1st, the supplier registration fees were waived back in May 2024. Since registration is completely free, we have seen a significant increase in the number of responses to our solicitations.
- There has been an increase in MWBE participation, and we are working on a reporting method to capture this information.

Project Inventory- Incoming Impactful Initiatives

As of June 30, 2024, the following projects were scheduled to be voted on by the County of Rockland's Legislature. High-level project overviews of each project are outlined below.

County Comprehensive Plan

Budgeted Funding Amount: \$1,500,000.00

Project Overview

According to the **Final Rule**: "Treasury recognizes the connection between neighborhood-built environment and physical health outcomes, including risk factors that may have contributed to disproportionate COVID-19 health impacts in low-income communities. The Final Rule also recognizes that the public health impacts of the pandemic are broader than just the COVID-19 disease itself and include substantial impacts on mental health and public safety challenges like rates of violent crime, which are correlated with a neighborhood's-built environment and features. As such, neighborhood features that promote improved health and safety outcomes respond to the preexisting disparities that contributed to COVID-19's disproportionate impacts on low-income communities."

Allocating funding towards the **County of Rockland Comprehensive Plan** is a strategic investment that can yield long-term assets for local communities. It will serve as a blueprint for sustainable development, guiding land use, transportation, housing, and environmental conservation. It will ensure that recovery efforts are not only sustainable but forward thinking; laying the groundwork for enhanced resiliency, economic recovery, and growth, improved public health, equity and inclusion, and efficient use of resources.

30 West Street – Haverstraw, NY – Affordable Housing by Westhab

Budgeted Funding Amount: \$1,800,000.00

Project Overview

The proposed Affordable Housing Initiative at 30 West is a new, 100% affordable multifamily development to be located in the Village of Haverstraw. The site of the proposed initiative is currently a municipal parking lot for community use, and the Village of Haverstraw has committed to enter a 99-year ground lease with Westhab to facilitate the development. The initiative will have a total of 81 units of affordable housing which will be priced at levels that are affordable to very low- and low-income tenants.

Within the 81 units, 23 will be reserved for households at or below 30% of Rockland County's Area Median Income (AMI), and between 15 and 20 of the 30% AMI units will be reserved as supportive housing units to serve formerly homeless individuals and families, individuals with mental health, and/or individuals with substance use disorders, among others.

Rents will be targeted to professionals such as teachers, healthcare workers, retail clerks, service professionals, and tradespeople, among others. These individuals and families are vital members of the Village's workforce and are foundational to Haverstraw's economy. These initiatives directly align to the Affordable Housing goals set forth in the United States Department of Treasury's Final Rule.

Land Acquisition of 55 Schriever Lane – New City for Affordable Housing

Budgeted Funding Amount: \$6,502,450.00

Project Overview

The subject property would be acquired to promote affordable Essential Worker and Community Workforce housing. A percentage of this property would also be designated as open space to emphasis on positive health outcomes through urban green space opportunities. The acquisition would maintain an importance on the promotion of healthier populations, healthier outcomes, healthier economy, and improved infrastructure for the current and future residents. These initiatives directly align to the Affordable Housing goals set forth in the United States Department of Treasury's **Final Rule**.

14.185 Acres of Land, on 55 Schriever Lane, New City, NY would be purchased on behalf of Rockland Housing Action Coalition, Inc. The Rockland Housing Action Coalition (RHAC), Inc. will be responsible for the development of no less than 24 affordable housing units for homeownership on this property.

RHAC will complete a Phase I Environmental Study. They will also secure insurance for the property. After the engineer completes the subdivision/site plan, RHAC and RHAC's engineer will attend a Town of Clarkstown Technical Advisory Committee (TAC) meeting. At the meeting the TAC committee members will review the subdivision/site plan.

Rockland Riverway Trail – Design and Engineering Services

Budgeted Funding Amount: \$6,196,427.00

Project Overview

The **Rockland Riverway Trail** (formerly known as *Rockland Resilient Path*) will also assist in improving our economic development and supporting our small businesses. As stated in the **Final Rule** "*The Final Rule includes enumerated eligible uses in disproportionately impacted communities for developing neighborhood features that promote improved health and safety outcomes, such as parks, green spaces, recreational facilities, sidewalks, pedestrian safety features like crosswalks, projects that increase access to healthy foods, streetlights, neighborhood cleanup, and other projects to revitalize public spaces*".

It was determined through a year-long Feasibility Study that such a trail is feasible (as described earlier in the *Project Inventory – Completed Projects section under Project 2.22: SUP - Rockland Riverway Trail - Feasibility Study*). The conclusion of the Feasibility Study highlighted next steps for the trail:

"The next steps for the Rockland Riverway Trail include a more detailed engineering and design phase that will bring this project to implementation. This design phase will include detailed engineering solutions to the segments (location, cross-section, materiality, etc.) and will include stormwater management practices for each segment. Environmental regulations will need to be addressed and the design of each segment must maximize the safety of all users.

The next engineering phase will also need to address wayfinding, a guidance system that will add significant value to the trail. Branding the trail as a true Rockland infrastructure element

should be an important objective of the design and engineering phase. This includes placemaking and wayfinding efforts that prioritize typical Rockland County views and assets and bring the users to important historical sites in the County. The goal should be to use the Riverway Trail as a tool to make local and regional users aware of the extensive assets and hidden treasures in the County.”

Phase 1: Cropsey Farm Walking Path*

Budgeted Funding Amount: \$156,900.00

Project Overview

Cropsey Farm is a County Park that provides open farm space in its natural environment. The Farm has a crushed stone dirt entrance, open field parking, barn, farm office house, residential farmer’s house, agricultural hoop houses and outdoor produce refrigeration equipment. The property is surrounded by residential homes with trees separating properties. The County has an agreement with the Rockland Farm Alliance to manage and operate the farm and related agricultural farming services. The Rockland Farm Alliance facilitates local sustainable agriculture and educational programs on Rockland County farming and history of Cropsey Farm. Cropsey Farm dates back to 1796 when the property was originally purchased. The County desires to design and construct an environmental walking path around the outer perimeter of the property. The design shall incorporate applicable criteria of the County’s Climate Smart Program.

Phase 1: Demarest Kill Park to Dutch Gardens Walking Path*

Budgeted Funding Amount: \$179,300.00

Project Overview

Demarest Kill and Dutch Garden Parks are County properties that provides environmental open space in its natural environment. The two County Parks preserve open space for community enjoyment. Each park has its own unique physical appearance, distanced from one another and boarder the Demarest Kill Stream. The Demarest Kill Park is open wooded space which the Demarest Kill stream flows into a small pond and into the Demarest Kill water tributary. The Dutch Garden Park is a floral planting garden park that has indigenous plantings common to Rockland County that was built in the 1930’s. The County sees creating a connection between the two parks will build open space opportunities for the community to enjoy.

Phase 1: Kennedy Dells Lighting*

Budget Funding Amount: \$87,070.50

Project Overview

The Kennedy Dells Park is a County Park that provides open space in its natural environment. The park has a developed entrance, park buildings, roadway, parking and bathroom services. Adjacent to the entrance and parking area are three soccer fields for

recreational use. These fields are leased to the Clarkstown Soccer Club for their exclusive use. The entrance, park buildings, roadway, parking and soccer fields are not illuminated. Park visitation and sports activities are only conducted during dawn to dusk hours. The County desires to illuminate these areas so that evening recreational park activities can be conducted.

**These three projects are a phased approach. Further design and formation will follow in later phases.*

Use of Evidence

As the County continues to gather data from community engagement and multi departmental collaboration, all allocation categories and current and proposed use of funds are based on both qualitative and quantitative data analysis. These sources of data have been developed and assessed via a Learning Agenda, logic model, and the use of SMART goals, allowing the County to identify gaps, organize proper methods of evidence and evaluation, build capacity, and develop trainings, foster collaboration, and evidence-based sharing, and reinforce organizational change. The County has reviewed both internal and possible external sources in our approach for using evidence and evaluation that will support the overarching efforts to create an evidence-based strategy for more sustainable interventions.

For every current and future expenditure, The County of Rockland has decided to consider for SLFRF funds, multiple evidence-based practices and research has been conducted prior to establishing a project in the Comprehensive Plan. Once all data and statistics are obtained, the ARPA Department Logic Models, SWOT, CATWOE, and balancing and reinforcing feedback loops are completed to ensure there are no unintended consequence and any risk of duplication of funds.

The Links have been used for each active grant opportunities/projects. Please note that the PPE Bag, Hygiene Packs, and GSH Reimbursement of Equipment not Covered by FEMA projects do not have a list of evidence-based links as these projects were in direct response to the prevention and treatment of COVID-19

Evidence Resources by Expenditure Category:

Note: Due to the similar nature of some projects, the Evidence Resources are shared.

1.8 COVID-19 Assistance to Small Businesses (Reviving Rockland Restaurant Grant)

1. *Customer demand for outdoor dining rose due to the Delta variant.* NRA. (n.d.). Retrieved December 5, 2021, from <https://restaurant.org/education-and-resources/resource-library/customer-demand-for-outdoor-dining-rose-due-to-the-delta-variant/>
2. *National statistics.* NRA. (n.d.). Retrieved December 17, 2021, from <https://restaurant.org/research-and-media/research/industry-statistics/national-statistics/>
3. *Food delivery app revenue and Usage Statistics (2021).* Business of Apps. (2021, November 4). Retrieved December 3, 2021, from <https://www.businessofapps.com/data/food-delivery-app-market/>
4. Perri, J. (2021, November 15). *Which company is winning the restaurant Food Delivery War?* Bloomberg Second Measure. Retrieved December 20, 2021, from https://secondmeasure.com/datapoints/food-delivery-services-grubhub-uber-eats-doordash-postmates/?utm_source=email&utm_medium=press&utm_campaign=press_request
5. Durbin, D.-A., & Press, T. A. (2021, April 20). *Food delivery will thrive even after COVID restrictions ease, drawing out tensions between delivery apps and restaurants.* Fortune. Retrieved December 20, 2021, from <https://fortune.com/2021/04/20/restaurants-food-delivery-apps-fees-commission-doordash-uber-eats-grubhub/>

6. Eats, U. (2020, July 21). *Food for thought: Listening to and learning from restaurants*. Uber Newsroom. Retrieved December 20, 2021, from <https://www.uber.com/newsroom/food-for-thought-listening-and-learning-from-restaurants/>
7. New York State National Restaurant Association. (2021, December 9). New York's Restaurants Faring Far Worse than National Average.
8. *Remote Food Orders are now restaurants' primary source of revenue*. Convenience Store News. (2021, December 14). Retrieved December 20, 2021, from <https://www.csnews.com/remote-food-orders-are-now-restaurants-primary-source-revenue>
9. *Facts. Why Tipping Works*. (n.d.). Retrieved December 20, 2021, from <https://whytippingworks.com/facts/>
10. Federal Reserve Bank of St. Louis. (2021, December 9). *How closing restaurants and hotels spills over to total employment*. Saint Louis Fed Eagle. Retrieved December 20, 2021, from <https://www.stlouisfed.org/on-the-economy/2020/april/closing-restaurants-hotels-spills-total-employment#>
11. *Protect our restaurants*. Protect Our Restaurants. (n.d.). Retrieved December 20, 2021, from <https://www.protectourrestaurants.com/>
12. Yang, Y., Liu, H., & Chen, X. (n.d.). *Covid-19 and restaurant demand: Early effects of the pandemic and stay-at-home orders*. International Journal of Contemporary Hospitality Management. Retrieved December 20, 2021, from <https://www.emerald.com/insight/content/doi/10.1108/IJCHM-06-2020-0504/full/html>
13. Norris, C. L., Taylor, S., Jr, & Taylor, D. C. (2021). Pivot! how the restaurant industry adapted during COVID-19 restrictions. *International Hospitality Review*, 35(2), 132-155. doi:<http://dx.doi.org/10.1108/IHR-09-2020-0052>
14. Lusk, K. (2021, Mar 31). City dwellers gained more access to public spaces during the pandemic – can they keep it? *The Conversation : Environment + Energy* Retrieved from <https://www.proquest.com/newspapers/city-dwellers-gained-more-access-public-spaces/docview/2507336519/se-2>
15. Cutting-Jones, H. (2021, Apr 19). From haute cuisine to hot dogs: How dining out has evolved over 200 years – and is innovating further in the pandemic. *The Conversation U.S.* Retrieved from <https://www.proquest.com/newspapers/haute-cuisine-hot-dogs-how-dining-out-has-evolved/docview/2514836739/se-2>
16. Lippert, J. F., Furnari, M. B., & Kriebel, C. W. (2021). The impact of the COVID-19 pandemic on occupational stress in restaurant work: A qualitative study. *International Journal of Environmental Research and Public Health*, 18(19), 10378. doi:<http://dx.doi.org/10.3390/ijerph181910378>
17. Ding, L., & Jiang, C. (2021). Restaurant proactive philanthropic activities and customer loyalty: A scenario-based study during the COVID-19 pandemic period. *International Hospitality Review*, 35(2), 260-279. doi:<http://dx.doi.org/10.1108/IHR-08-2020-0045>
18. *New York COVID-19 Restaurant Impact Snapshot*. New York State Restaurant Association. (n.d.). https://www.nysra.org/uploads/1/2/1/3/121352550/ny_survey_covid_impact_press_release.pdf
19. *Survey shows New York's restaurant industry still crushed ...* New York State Restaurant Association. (n.d.). https://www.nysra.org/uploads/1/2/1/3/121352550/ny_survey_covid_impact_press_release.pdf

20. *Local Restaurant Owners, State Restaurant Association Urge Gov't to Replenish 'Restaurant Revitalization Fund' as Outdoor Dining Season Ends*. New York State Restaurant Association. (n.d.).
https://www.nysra.org/uploads/1/2/1/3/121352550/ny_survey_covid_impact_press_release.pdf
21. *State Restaurant Association Survey: No Expectation of Return to Normalcy Any Time Soon Among Restaurant Operators*. New York State Restaurant Association.
https://www.nysra.org/uploads/1/2/1/3/121352550/ny_survey_covid_impact_press_release.pdf
22. Hanners, K. A., & Redden, S. M. (2021). Communicating values to cultivate sustainable occupational identity: How restaurant workers resist service work stigma. *Sustainability*, 13(15), 8587. doi:<http://dx.doi.org/10.3390/su13158587>

1.11 Community Violence Services (Transformational Impacts - Youth Employment Program)

1. [NYC's Youth Summer Jobs Program and the Rate of Criminal Activity](#)
2. [The Effects of Summer Jobs on Youth Violence](#)
3. [How can summer jobs reduce crime among youth?](#)
4. [Summer jobs lower violent-crime rate for urban teens](#)
5. [How youth summer jobs can help drive down crime and launch careers](#)
6. [Crime and Summer Youth Employment Programs](#)
7. [Summer Jobs Reduce Violence Among Youth Facing Barriers to Opportunity in the United States](#)
8. [Summer jobs reduce violence among disadvantaged youth](#)
9. [When Scale and Replication Work: Learning from Summer Youth Employment Experiments](#)
10. [Adult and Youth Workforce Development Programs' Role in Supporting Community Violence Interventions](#)
11. How Do Summer Youth Employment Programs Improve Criminal Justice Outcomes, and for Whom?
12. Crime-Fighting Lessons from Summer Youth Employment Programs
13. [Young workers hit hard by the COVID-19 economy](#)
14. [WORKING FOR A BETTER FUTURE: How expanding employment opportunities for D.C's youth creates public safety benefits for all residents.](#)
15. [COVID-19 Wreaks Havoc on Youth Employment](#)

1.11 Community Violence Services (Transformational Impacts Program HAAC Youth After School Enrichment Program, Transformational Impacts Program - Spring Valley Youth Police Initiative)

1. 2022 NYS Office of Children and Family Services – Rockland – Juvenile Justice Detention Stat Sheet
2. <https://villagespringvalley.org/village-departments/police-department/youth-police-initiative/>
3. <https://www.nafi.com/innovations/youth-and-police-initiative/>
4. Cure Violence Global <https://cvg.org/>
5. https://www.youtube.com/watch?v=RqDWrnV_vFA&t=9s
6. <https://www.vera.org/community-violence-intervention-programs-explained>

7. https://www.nyc.gov/site/doh/health/neighborhood-health/anti-violence_page
8. <https://www.rand.org/research/gun-policy/analysis/essays/gun-buyback-programs.html>
9. [Guns and homicide in the home. https://pubmed.ncbi.nlm.nih.gov/8371731/](https://pubmed.ncbi.nlm.nih.gov/8371731/)
10. <https://ojjdp.ojp.gov/library/publications/effects-law-enforcement-mentoring-youth-scoping-review>)
11. <https://www.dutchessny.gov/CMSPrint/Dutchess-County-Honors-Youth-and-Police-Initiative-Graduates.htm>
12. <https://www.sungazette.com/news/top-news/2024/05/kickin-it-with-cops-officers-compete-alongside-students-in-friendly-kickball-game/>
13. <https://www.wdbj7.com/2023/06/20/danville-police-departments-youth-police-academy-shows-kids-ropes-builds-relationships/>
14. <https://globalsportmatters.com/health/2023/04/12/youth-sports-programs-more-important-than-ever-kids-mental-health/>
15. <https://thecampanile.org/21254/sports/different-countries-place-cultural-emphasis-on-specific-sports/>
16. <https://medicalxpress.com/news/2024-04-joy-sports-boost.html#:~:text=%22Both%20subjective%20and%20objective%20measures,long%20Dterm%20benefits%20for%20individuals>
17. <https://thediscoverer.columbus.edu.co/showcase/rhythms-reshaping-youth-culture-the-power-of-music/>
18. https://www.aacap.org/AACAP/Families_and_Youth/Facts_for_Families/FFF-Guide/The-Influence-Of-Music-And-Music-Videos-040.aspx

1.12-Mental Health Services (9-1-1 Dispatch Software)

1. <https://sjemed.com/article/97367>
2. <https://www.usatoday.com/story/news/nation/2022/06/08/denver-non-police-star-teams-reduced-crime-study/10001341002/>
3. <https://www.foxcarolina.com/2023/08/22/new-anderson-dispatch-system-cuts-down-mistakes/>
4. <https://www.wifr.com/2024/06/11/rockford-fire-department-adopts-monumental-911-technology/>
5. <https://www.tfah.org/story/sustained-increased-funding-needed-for-988-suicide-crisis-lifeline/>
6. <https://policylab.chop.edu/blog/check-988-one-year-after-launch>
7. <https://www.psychiatry.org/news-room/apa-blogs/more-research-needed-on-988-crisis-line>
8. <https://www.naco.org/news/counties-applaud-action-improve-9-8-8-suicide-and-crisis-lifeline>
9. <https://spectrumnews1.com/ca/la-west/health-and-medicine/2024/03/21/fcc-will-introduce-rule-that-recognizes-cell-phone-location-for-988-calls>

2.22 Strong Healthy Communities: Neighborhood Features that Promote Health & Safety (Rockland Resilience Recreation Grant)

1. Nature Conservancy
2. Engemann, K., Pedersen, C. B., Arge, L., Tsirogiannis, C., Mortensen, P. B., & Svenning, J.-C. (2019, March 12). Residential green space in childhood is associated

with lower risk of psychiatric disorders from adolescence into adulthood. PNAS. Retrieved December 20, 2021, from <https://www.pnas.org/content/116/11/5188>

3. Lu, Y., Chen, L., Liu, X., Yang, Y., Sullivan, W. C., Xu, W., Webster, C., & Jiang, B. (2021). Green spaces mitigate racial disparity of health: A higher ratio of green spaces indicates a lower racial disparity in SARS-COV-2 infection rates in the USA. *Environment International*, 152, 106465. <https://doi.org/10.1016/j.envint.2021.106465>
4. Attitudes towards urban green during the COVID-19 pandemic via Twitter. May 2022. <https://www.sciencedirect.com/science/article/pii/S0264275122001469>
5. Climate Solutions Double as Health Interventions
6. Green Spaces and Mortality: A systematic Review and Meta-analysis of Cohort Studies, 2019
7. Spending at least 120 minutes a week in nature is associated with good health and wellbeing. June 2019. <https://www.nature.com/articles/s41598-019-44097-3>
8. Resiliency and Equity in a Time of Crisis: Investing in Public Urban Green Space is Now More Important Than Ever in the U.S.

2.22 Strong Healthy Communities: Neighborhood Features that Promote Health & Safety (Rockland Riverway Trail – Feasibility Study)

1. *Economic impact: U.S. Bicycle Route System*. Adventure Cycling Association. (n.d.). Retrieved December 21, 2021, from <https://www.adventurecycling.org/advocacy/building-bike-tourism/economic-impact/>
2. *Tourism - NYBC supports bike-based tourism in New York State*. New York Bicycling Coalition. (n.d.). Retrieved December 21, 2021, from <https://nybc.net/tourism>
3. *The Economic Impact of the Erie Canalway Trail*. Parks & Trails New York. (2014, July).
4. *2020 Annual Report*. Parks and Trails New York. (2021, April).
5. *New York*. Outdoor Industry Association. (n.d.). Retrieved December 21, 2021, from <https://outdoorindustry.org/state/new-york/>
6. Bob Batz, J. (2021, December 16). *Study: Great allegheny passage is 'an economic highway' that generated \$121 million in 2019*. Gazette. Retrieved from <https://www.post-gazette.com/local/south/2021/11/30/Study-Great-Allegheny-Passage-Conservancy-Fourth-Economy-economic-impact-bike-trail/stories/202111240109>
7. Rails-to-trails conservancy releases latest research on net economic impact of trails in wisconsin during ceremony for 2019 rail-trail champion award: Former RTC president keith laughlin recognized as steward of rail-trail movement and route of the badger trail network visionary, a project that can maximize the \$1.5 billion annual economic impact of wisconsin's trails. (2019, Dec 03). *PR Newswire* Retrieved from <https://www.proquest.com/wire-feeds/rails-trails-conservancy-releases-latest-research/docview/2321265408/se-2?accountid=34614>
8. Gibson, L. (2020, Aug 31). Walkability goal faces difficult steps: Indianapolis hurt by lack of sidewalks, car culture. *Indianapolis Star* Retrieved from <https://www.proquest.com/newspapers/walkability-goal-faces-difficult-steps/docview/2438574838/se-2?accountid=34614>
9. Winters, M., Branion-Calles, M., Therrien, S., Fuller, D., Gauvin, L., Whitehurst, D. G. T., & Nelson, T. (2018). Impacts of bicycle infrastructure in mid-sized cities (IBIMS): Protocol for a natural experiment study in three canadian cities. *BMJ Open*, 8(1) doi:<http://dx.doi.org/10.1136/bmjopen-2017-019130>

10. *Governor Hochul signs legislation to improve bicycle and pedestrian access at MTA Bridges and passenger stations.* Governor Kathy Hochul. (2021, December 28). Retrieved from <https://www.governor.ny.gov/news/governor-hochul-signs-legislation-improve-bicycle-and-pedestrian-access-mta-bridges-and>
11. *Dot: Bike trips increased during the pandemic.* Spectrum News NY1. (2021, October). Retrieved from <https://www.ny1.com/nyc/all-boroughs/news/2021/10/08/dot--bike-trips-increased-during-the-pandemic>
12. *Bikes & Bucks: 6 Ways Bicycling Benefits Businesses & Local Economies.* Adventure Cycling Association. (2015, May). Retrieved from <https://www.adventurecycling.org/resources/blog/bikes-bucks-6-ways-bicycling-benefits-businesses-local-economies/>
13. Garrett-Peltier, H. (2011, June). *Estimating the Employment Impacts of Pedestrian, Bicycle, and Road Infrastructure.* Bike League. Retrieved from https://www.bikeleague.org/sites/default/files/PERI_Natl_Study_June2011.pdf
14. Jonathan Maus (Publisher/Editor) Jonathan Maus is BikePortland's editor. (2019, January 14). *Study shows biking customers spend more.* BikePortland. Retrieved from <https://bikeportland.org/2012/07/06/study-shows-biking-customers-spend-more-74357>
15. Nickerson, N. P., Jorgenson, J., Berry, M., & Kyenye, J. (2014, January). *Analysis of Touring Cyclists: Impacts, Needs and Opportunities for Montana.* Scholar Works. Retrieved from https://scholarworks.umt.edu/cgi/viewcontent.cgi?article=1225&context=itr_pubs
16. *Survey: To recruit and Keep Millennials, give them walkable places with good transit and other options.* Transportation For America. (2014, April 22). Retrieved from <https://t4america.org/2014/04/22/survey-to-recruit-and-keep-millennials-give-them-walkable->

2.29 Loans or Grants to Mitigate Financial Hardship (Small Business Rescue Reimbursement Grant Program)

1. Census, U. S. (n.d.). *Small Business Pulse Survey: 01/03/2/22 - 01/09/2022.* Small Business Pulse Survey Data. Retrieved January 19, 2022, from <https://portal.census.gov/pulse/data/#data>
2. *Small businesses and the Economic Recovery: Work in Progress.* Office of the New York State Comptroller. (n.d.). Retrieved January 19, 2022, from [https://www.osc.state.ny.us/reports/small-businesses-and-economic-recovery-work-progress#:~:text=As%20of%20October%2017%2C%202021,referred%20to%20as%20October%202020\).&text=One%20in%20five%20small%20businesses%20also,return%20to%20%E2%80%9Cnormal%20operations.%E2%80%9D](https://www.osc.state.ny.us/reports/small-businesses-and-economic-recovery-work-progress#:~:text=As%20of%20October%2017%2C%202021,referred%20to%20as%20October%202020).&text=One%20in%20five%20small%20businesses%20also,return%20to%20%E2%80%9Cnormal%20operations.%E2%80%9D)
3. *New York's economy and finances in the COVID-19 ERA (March 18, 2021).* Office of the New York State Comptroller. (n.d.). Retrieved January 19, 2022, from <https://www.osc.state.ny.us/reports/impact-covid-19-march-18-2021>
4. *As small businesses continue to struggle globally, women and minority-led ones are hardest hit.* Meta. (2021, April 8). Retrieved January 19, 2022, from <https://about.fb.com/news/2021/04/latest-state-of-small-business-report/>
5. Sundaram, A. (2021, April 9). *U.S. small business closures are ticking back toward covid pandemic highs.* CNBC. Retrieved January 19, 2022, from <https://www.cnn.com/2021/04/09/small-business-closures-tick-back-toward-covid-pandemic-highs.html>

6. New York Small Business Economic Profile. (n.d.). Retrieved January 19, 2022, from <https://cdn.advocacy.sba.gov/wp-content/uploads/2019/04/23142654/2019-Small-Business-Profiles-NY.pdf>
7. U.S. Small Business Economic Profile. SBA.gov. (n.d.). Retrieved January 20, 2022, from <https://cdn.advocacy.sba.gov/wp-content/uploads/2020/06/04144224/2020-Small-Business-Economic-Profile-US.pdf>
8. Millions of small businesses closed in 2020: The long recovery ahead. Small Business & Entrepreneurship Council. (n.d.). Retrieved January 20, 2022, from <https://sbecouncil.org/2021/01/21/millions-of-small-businesses-closed-in-2020-the-long-recovery-ahead/>
9. Serrano, A. (2020, July 24). How many jobs do small businesses really create? Fundera. Retrieved January 20, 2022, from <https://www.fundera.com/blog/small-businesses-job-creation>
10. 2019-2021 Rockland County Small Business Report. NYS Department of Labor
11. Small Business Facts: Small Business Job Creation. April 2022. <https://cdn.advocacy.sba.gov/wp-content/uploads/2022/04/22141927/Small-Business-Job-Creation-Fact-Sheet-Apr2022.pdf>
12. H&R Block Small Business Resilience Series Study: Minority-Owned Small Businesses Still Heavily Impacted by Pandemic. April 2022 <https://www.globenewswire.com/news-release/2022/04/21/2426492/0/en/H-R-Block-Small-Business-Resilience-Series-Study-Minority-Owned-Small-Businesses-Still-Heavily-Impacted-By-Pandemic.html>
13. Small Business Owners Exhausted, but Optimistic Heading into 2022. January 2022. <https://www.linkedin.com/pulse/small-business-owners-exhausted-optimistic-heading-/?trackingId=enHumNEKZYtrL3%2FSXDimyg%3D%3D>
14. As inflation soars, major corporations are posting record profits. But small businesses are feeling the squeeze. April 2022. <https://www.cbsnews.com/news/inflation-profits-corporate-small-business/>
15. New Normal for Small Businesses: Inflation, Supply Delays, and Labor Shortages Still Hampering Full Pandemic Recovery. April 2022. <https://eig.org/new-normal-for-small-businesses-inflation-supply-delays-and-labor-shortages-still-hampering-full-pandemic-recovery/>
16. The Effects of Inflation on U.S. Small Businesses. July 14, 2022. <https://www.business.org/finance/accounting/effects-of-inflation-on-small-businesses/>

2.34 Assistance to Impacted Nonprofit Organizations (Impacted or Disproportionately Impacted) (Food Security Grant Program, Food Security Equipment Grant)

1. <https://foodprint.org/issues/food-justice>
2. <https://nifa.usda.gov/funding-opportunity/community-food-projects-cfp-competitive-grants-program>
3. <https://www.investinginfood.com/grant-opportunities/>
4. <https://www.grantwatch.com/grantnews/grants-that-can-help-fix-food-deserts-by-funding-communities/>
5. <https://www.rand.org/blog/2020/03/food-access-challenges-and-solutions-brought-on-by.html>
6. <https://www.ers.usda.gov/topics/food-nutrition-assistance/food-security-in-the-us/>
7. <https://www.consumerreports.org/food/americans-turning-to-food-banks-during-the-pandemic-a6629016730/>

2.34 Assistance to Impacted Nonprofit Organizations (Impacted or Disproportionately Impacted) (Nonprofit Recovery Reimbursement Grant Program)

1. [The new world of philanthropy: How changing financial behavior, public policies, and COVID-19 affect nonprofit fundraising and marketing](#)
2. [THE VOICE OF CHARITIES FACING COVID-19 WORLDWIDE](#)
3. [NFF's 2022 State of the Nonprofit Sector Survey](#)
4. [CNE's 2021 Nonprofit Needs Survey](#)
5. Rockland County ARPA Department Survey

Housing Initiatives (Community and Affordable Housing Needs Assessment, Spring Valley Housing Development Fund Corporation, Land Acquisition - Eberling Property, Revolving Loan Fund)

1. <https://www.pattern-for-progress.org/wp-content/uploads/2023/09/2023-Out-of-Reach.pdf>
2. (<https://www.naco.org/event/arpa-and-beyond-county-perspectives-using-federal-funds-address-affordable-housing-challenges>)
3. LA THRIVES and Los Angeles Regional Open Space and Affordable Housing, 2019
4. Salud America, Robert Wood Johnson Foundation, 2019
5. US Department of Treasury, How-to-Guide, 2024
6. County of Rockland *Community and Affordable Housing Needs Assessment*
7. Rockland County ARPA Department Survey
8. Feedback from the County of Rockland's 2023 and 2024 Housing Forum

Climate Mitigation (Stony Point – Lowlands Hills Park – Climate Mitigation Efforts)

Stony Point Flooding Events:

1. Major Flooding Event – July 2023
 - July 9, 2023 – Massive Rainstorm hits Stony Point.
 - [Stony Point neighborhood flooded during torrential storms Sunday](#)
 - [Checking road conditions in Stony Point](#)
 - [Major rainfall impacts life in Hudson Valley](#)
 - July 10, 2023 – Governor Hochul added Rockland County to the previously declared State of Emergency.
 - [Governor Hochul declares State of Emergency](#)
 - [Flood-damaged roads continue to cause problems for drivers in Rockland, Westchester counties](#)
 - [Stony Point cleans up from heavy storm damage](#)
 - [Stony Point Supervisor Jim Monaghan talks about NY flood](#)
 - [Hudson Valley Flooded: Day, Lawler Tour Stony Point Damage](#)
 - [State Police announce road closures in the area of the Palisades Parkway, Stony Point, Highland Falls, and West Point](#)
 - July 11, 2023 – Recovery efforts continue, and Rockland County Executive provides updates.
 - [County Update On Storm Damage](#)

- [Rockland County EMTs saved more than a dozen people during Sunday's flash flooding](#)
 - [Stony Point swamped: flash flooding causes road closure and property damage across Northern Rockland](#)
- July 12, 2023 – Several roads open that were damaged from the storm, and recovery efforts continue. Many roads though are still closed.
 - [Rockland County reopens several roads after Sunday's devastating storms: Check the list](#)
 - [1 dead, thousands impacted by flooding in Orange, Rockland counties](#)
 - [Update On Historic Rainfall, Devastating Flooding In New York](#)
- July 14, 2023 – More rain expected as Stony Point is still recovering from previous storm
 - [Flooding concerns as storms hit already flooded suburbs in Orange, Rockland counties](#)
- July 15, 2023 – Route 9W fully reopens after being closed in portion of Stony Point on 07/09/23.
 - [Update: Bear Mountain Bridge Open to All Traffic](#)
- 17, 2023 – Palisades Interstate Parkway fully reopens after being closed north of Exit 14 on 07/09/23.
 - [Roads closed by flooding reopen across the Hudson Valley](#)
 - [Governor Hochul Updates New Yorkers](#)
- 2. Winter Storm/Coastal Flooding – December 2022
 - December 22, 2022 – [Hochul Declares State of Emergency](#)
- 3. Tropical Storm Ida – September 2021
 - September 1, 2021 - [Hochul Declares State of Emergency](#)
 - September 2, 2021 - [Hochul requests the President declare a State of Emergency for New York State](#)
 - September 3, 2021 - [Storm Ida: How Much Rain Did You Get? A Look At Totals From Throughout Hudson Valley](#)
 - [Storm Ida: How Much Rain Did You Get? A Look At Totals From Throughout Hudson Valley – Stony Point with 5.9 inches](#)
- 4. Tropical Storm Henri – August 2021
 - August 21, 2021 - [Governor Cuomo Declares a State Disaster Emergency – Tropical Storm Henri](#)
 - August 22, 2021 - [Henri dumps rain, causes flooding in New York. How much to expect in each region](#)
- 5. Tropical Storm Elsa – July 2021